

LOC/DME I-SYQ 111.75 Chan 54 (Y)	APP CRS 078°	Rwy Idg 10591 TDZE 1118 Apt Elev 1135
--	------------------------	--

ILS or LOC RWY 8

PHOENIX SKY HARBOR INTL (PHX)

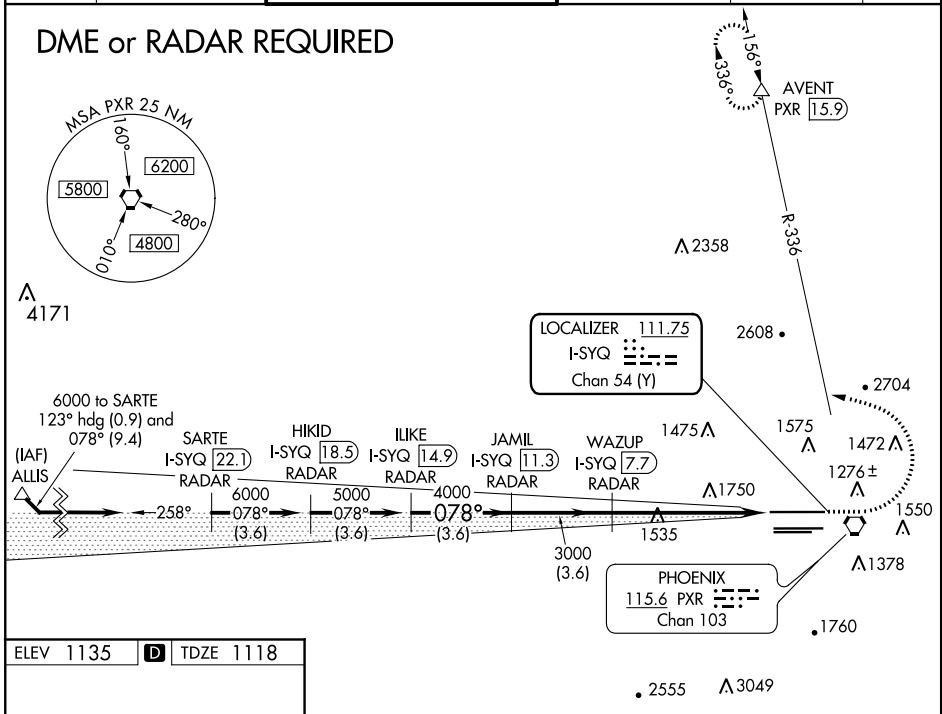
Simultaneous approach authorized with Rwy 7R and RNAV (RNP) Z Rwy 7L, RNAV (GPS) Y Rwy 7L. DME required.

MALSF

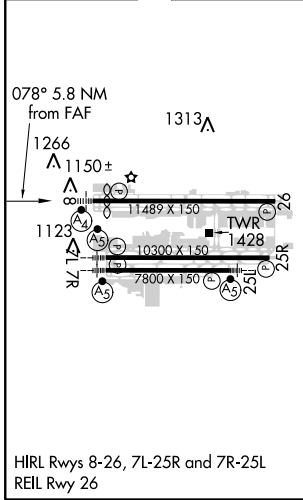
MISSED APPROACH: Climb to 3000, then climbing left turn to 5000 via heading 280° and PXR R-336 to AVENT/PXR 15.9 DME and hold.

D-ATIS 127.575	PHOENIX APP CON 128.65 353.9	PHOENIX TOWER 118.7 278.8 (Rwy 8-26) 120.9 254.3 (Rwy 7L-25R, 7R-25L)	GND CON 119.75 269.2 (N) 132.55 269.2 (S)	CLNC DEL 118.1 269.2	CPDLC
--------------------------	--	---	---	--------------------------------	-------

DME or RADAR REQUIRED



ELEV 1135	D	TDZE 1118
-----------	----------	-----------



HIRL Rwy 8-26, 7L-25R and 7R-25L
REIL Rwy 26

VGSi and ILS glidepath not coincident (VGSi Angle 3.00/TCH 69).				3000	5000	PXR	AVENT
				↑	hdg 280°	R-336	△
				Use I-SYQ DME when on LOC course.			
ILIKE I-SYQ 14.9 RADAR	JAMIL I-SYQ 11.3 RADAR	WAZUP I-SYQ 7.7 RADAR	I-SYQ 1.9				
5000	4000	3000	3000				
GS 3.00° TCH 55				Procedure Turn NA			
				3.6 NM	3.6 NM	5.7 NM	
				A	B	C	D
S-ILS 8	1368-1			250 (300-1)			
S-LOC 8	1860-1 742 (800-1)	1860-1¼ 742 (800-1¼)	1860-2¼ 742 (800-2¼)	1860-2½ 742 (800-2½)			
C CIRCLING	1860-1 725 (800-1)	1860-1¼ 725 (800-1¼)	2040-2¾ 905 (1000-2¾)	2560-3 1425 (1500-3)			

SW-4, 16 JUL 2020 to 13 AUG 2020

SW-4, 16 JUL 2020 to 13 AUG 2020