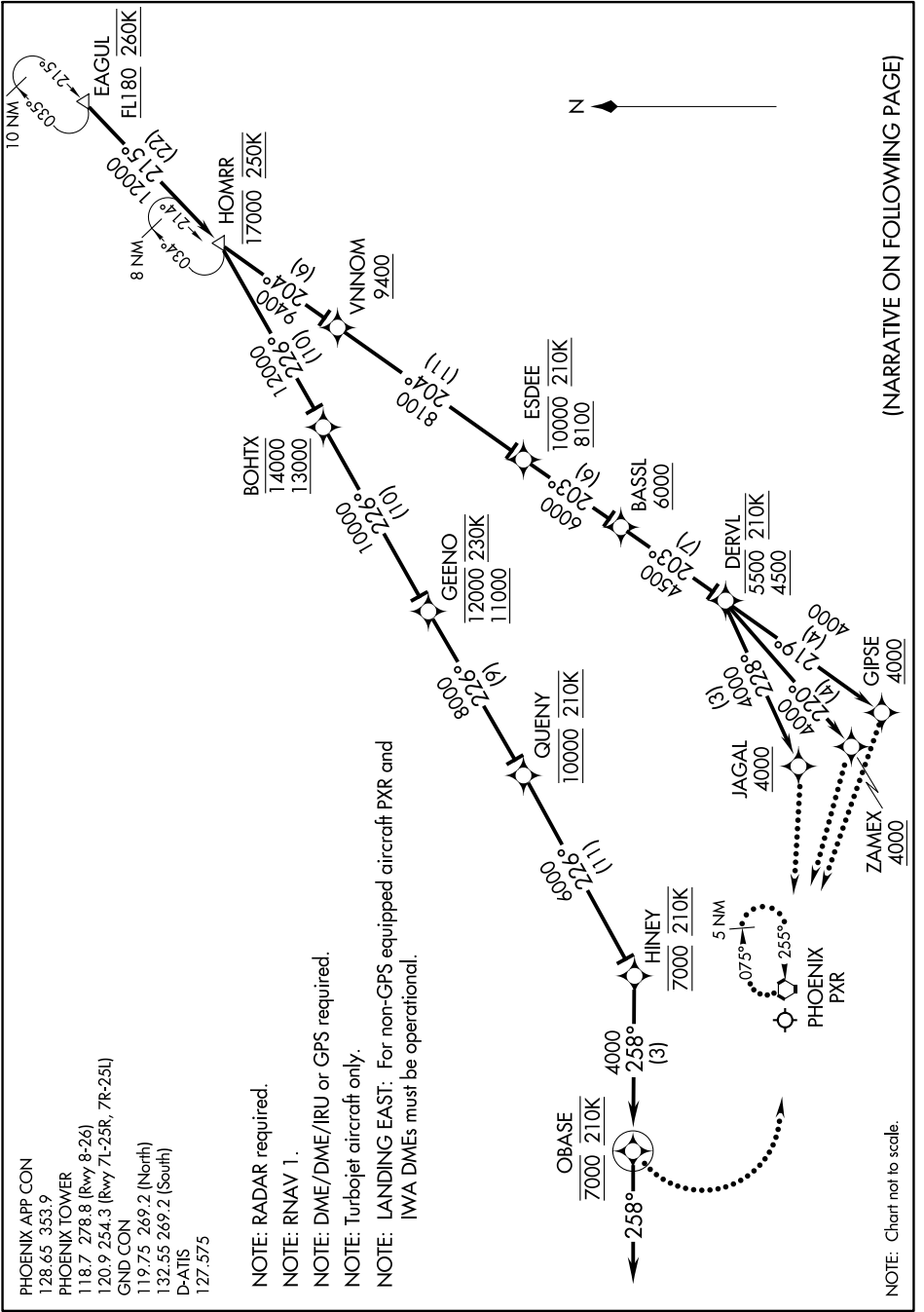


EAGUL SIX ARRIVAL (RNAV) Arrival Routes

SW-4, 16 JUL 2020 to 13 AUG 2020



(NARRATIVE ON FOLLOWING PAGE)

SW-4, 16 JUL 2020 to 13 AUG 2020

EAGUL SIX ARRIVAL (RNAV) Arrival Routes

PHOENIX APP CON  
128.65 353.9  
PHOENIX TOWER  
118.7 278.8 (Rwy 8-26)  
120.9 254.3 (Rwy 7L-25R, 7R-25L)  
GND CON  
119.75 269.2 (North)  
132.55 269.2 (South)  
D-ATIS  
127.575

- NOTE: RADAR required.
- NOTE: RNAV 1.
- NOTE: DME/DME/IRU or GPS required.
- NOTE: Turboprop aircraft only.
- NOTE: LANDING EAST: For non-GPS equipped aircraft PXR and IWA DMEs must be operational.

NOTE: Chart not to scale.