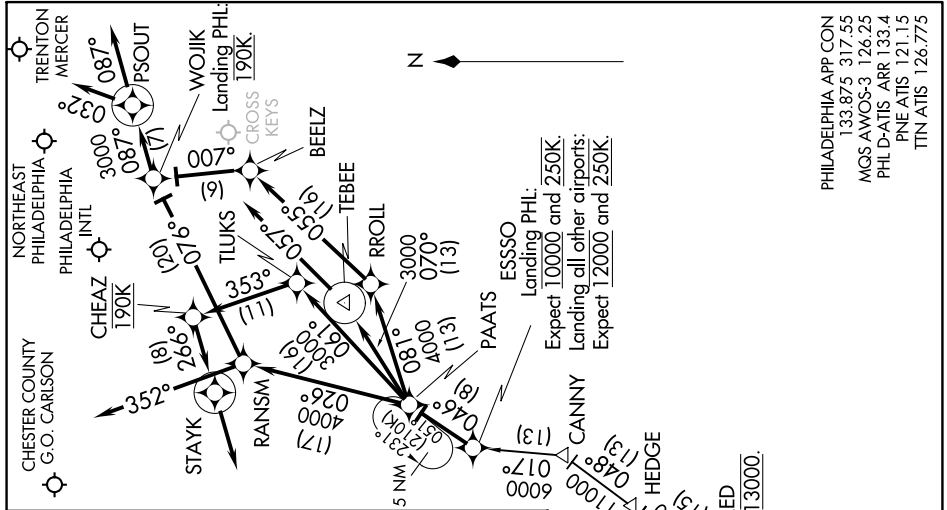


# PAATS THREE ARRIVAL (RNAV)

PHILADELPHIA, PENNSYLVANIA

NE-4, 16 JUL 2020 to 13 AUG 2020



PHILADELPHIA APP CON  
133.875 317.55  
MQS AMWOS-3 126.25  
PHL D-ATIS ARR 133.4  
PNE ATIS 121.15  
ITTN ATIS 126.775

**ARRIVAL ROUTE DESCRIPTION**

FLAT ROCK TRANSITION (FAK.PAATS3):  
GORDONSVILLE TRANSITION (GVE.PAATS3):  
PATUXENT TRANSITION (PXT.PAATS3):

From over ESSO on track 046° to PAATS thence....

Landing MQS: From over PAATS on track 026° to RANSM, then on heading 352°. Expect RADAR vectors to final approach course.

Landing PNE, ITIN: From over PAATS on track 026° to RANSM, then on track 076° to WOJIK, then on track 087° to PSOUT, then on heading 032°. Expect RADAR vectors to final approach course.

Landing PHL Rwy 9L, 9R: From over PAATS on track 061° to TLUKS, then on track 353° to cross CHEAZ at 190K, then on track 266° to STAYK, then on track 266°. Expect RADAR vectors to final approach course.

Landing PHL Rwy 17, 35: From over PAATS on track 070° to TEBEE, then on heading 057°. Expect RADAR vectors to final approach course.

Landing PHL Rwy 26, 27L, 27R: From over PAATS on track 081° to RROLL, then on track 055° to BEELZ, then on track 007° to cross WOJIK at 190K, then on track 087° to PSOUT, then on track 087°. Expect RADAR vectors to final approach course.

NOTE: DME/DME/IRU or GPS required.  
 NOTE: RNAV 1.  
 NOTE: For turbojets only.  
 NOTE: PXT transition as assigned by ATC.  
 NOTE: RADAR required.  
 NOTE: CAUTION: Parachute Jumping 3.3 NM  
 NE BEELZ, 1.5 NM radius Cross Keys  
 Airport AOB 13,500 (SR-SS).

JAYBO Expect 15000.  
 BUKYK 14000 087° (35)  
 SHONA 17000 070° (78)  
 GORDONSVILLE GVE 17000 048° (120)  
 PATUXENT PXT 15000 048° (30)  
 HEDGE 11000 048° (113)  
 GARED Expect 13000.  
 CANNY 6000 017° (13)  
 PAATS 4000 070° (113)  
 RROLL 3000 070° (113)  
 TEBEE 3000 070° (113)  
 TLUKS 3000 070° (113)  
 STAYK 4000 026° (77)  
 RANSM 4000 026° (77)  
 CHEAZ 190K 190K  
 PSOUT 3000 087° (71)  
 WOJIK 3000 087° (71)  
 BEELZ 3000 087° (71)  
 CROSS KEYS 190K  
 ESSO Landing PHL: Expect 10000 and 250K. Landing all other airports: Expect 12000 and 250K.

NOTE: Chart not to scale.

# PAATS THREE ARRIVAL (RNAV)

PHILADELPHIA, PENNSYLVANIA

NE-4, 16 JUL 2020 to 13 AUG 2020