

JIIIMS THREE ARRIVAL (RNAV)

PHILADELPHIA, PENNSYLVANIA

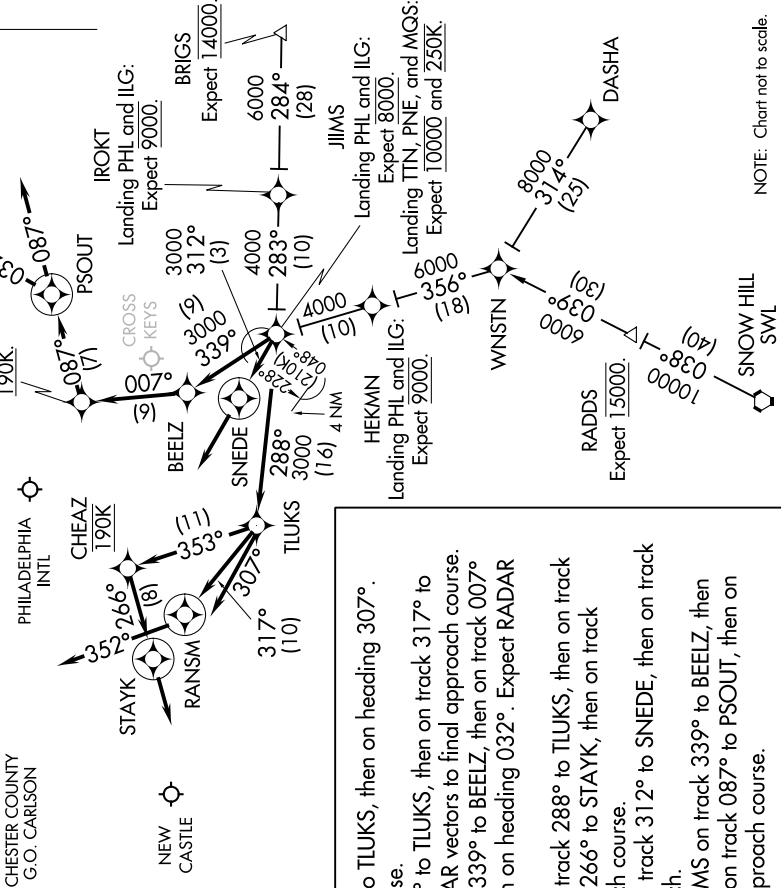
NE-4, 16 JUL 2020 to 13 AUG 2020

PHILADELPHIA APP CON
133.875 317.55
ILG ATIS 123.95
MGS AWOS-3 126.25
PHL D-ATIS ARR 133.4
PNE ATIS 121.15
TTN ATIS 126.775

NOTE: CAUTION: Parachute Jumping 3.3 NM NE BEELZ, 1.5 NM radius Cross Keys Airport, AOB 13,500 (SR-SS).
NOTE: RNAV 1.
NOTE: For turbojets only.
NOTE: Radar required.

NOTE: DME/DME/IRU or GPS required.

TRENTON MERCER
NORTH-EAST PHILADELPHIA
WOJJK Landing PHL: 190K.
PSOUT
CROSS KEYS
IROKVT Landing PHL and ILG: Expect 9000.
BRIGS Expect 14000.
JIIIMS
Landing PHL and ILG: Expect 8000.
HEKMN Landing PHL and ILG: Expect 9000.
WNSTN
RADDS Expect 15000.
SNOW HILL SWL



NOTE: Chart not to scale.

ARRIVAL ROUTE DESCRIPTION

BRIGS TRANSITION (BRIGS.JIIMS3):
DASHA TRANSITION (DASHA.JIIMS3):
SNOW HILL TRANSITION (SWL.JIIMS3):

Landing ILG: From over JIIIMS on track 288° to TLUKS, then on heading 307°. Expect RADAR vectors to final approach course.
Landing MGS: From over JIIIMS on track 288° to TLUKS, then on track 317° to RANSM, then on heading 352°. Expect RADAR vectors to final approach course.
Landing PNE, TTN: From over JIIIMS on track 339° to BEELZ, then on track 007° to WOJJK, then on track 087° to PSOUT, then on heading 032°. Expect RADAR vectors to final approach course.
Landing PHL Rwy 9L, 9R: From over JIIIMS on track 288° to TLUKS, then on track 353° to cross CHEAZ at 190K, then on track 266° to STAYK, then on track 266°. Expect RADAR vectors to final approach course.
Landing PHL Rwy 17, 35: From over JIIIMS on track 312° to SNEDE, then on track 312°. Expect RADAR vectors to final approach.
Landing PHL Rwy 26, 27L, 27R: From over JIIIMS on track 339° to BEELZ, then on track 007° to cross WOJJK at 190K, then on track 087° to PSOUT, then on track 087°. Expect RADAR vectors to final approach course.

JIIIMS THREE ARRIVAL (RNAV)

PHILADELPHIA, PENNSYLVANIA

NE-4, 16 JUL 2020 to 13 AUG 2020