

PATUXENT RIVER, MARYLAND

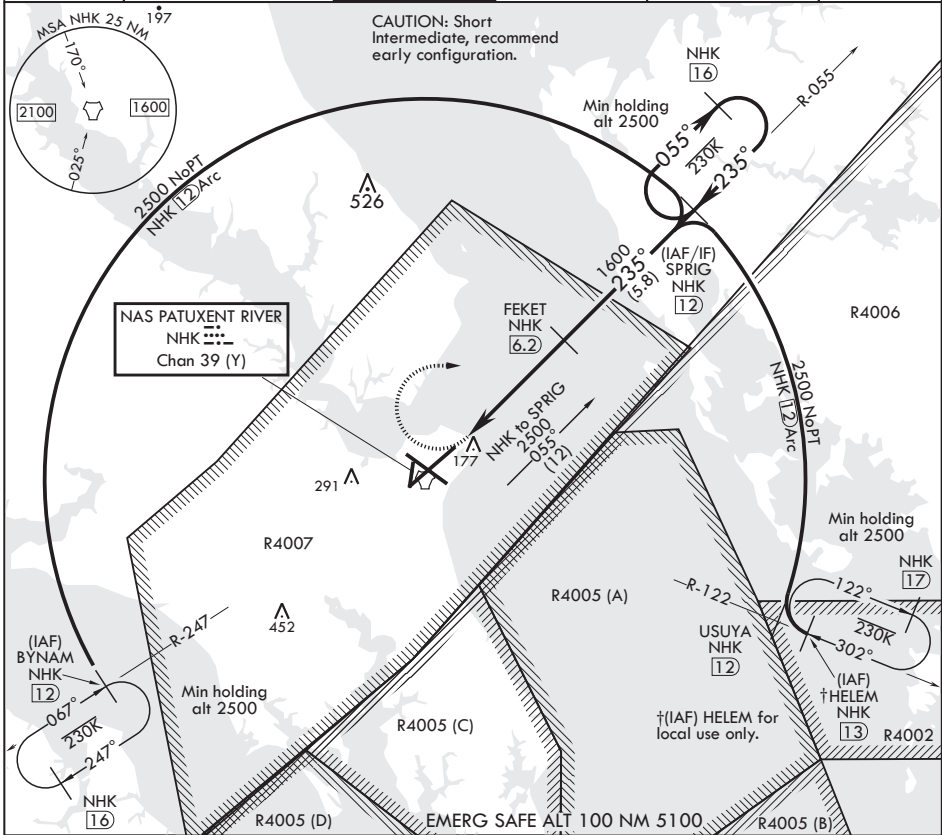
TACAN RWY 24

TACAN NHK Chan 39 (Y)	APCH CRS 235°	Rwy ldg TDZE Arpt Elev	11,799 20 39
--------------------------	------------------	------------------------------	--------------------

AL-314 (USN) PATUXENT RIVER NAS (TRAPNELL FLD) (KNHK)

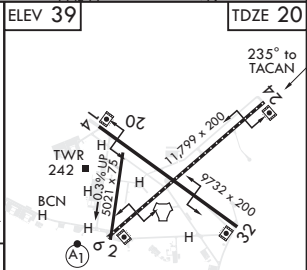
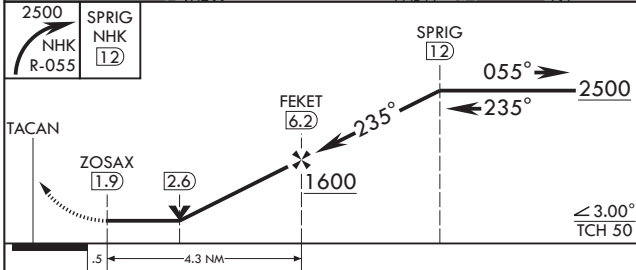
MISSED APPROACH: Climbing right turn to 2500, intercept NHK TACAN R-055 to SPRIG and hold.	
--------------------------------------------------------------------------------------------	--

ATIS★ 322.425	APP CON/DEP CON 121.0 250.3	TOWER★ 123.7 343.65	GND CON 120.6 336.4	CLNC DEL 135.2 316.125	ASR/PAR
------------------	--------------------------------	------------------------	------------------------	---------------------------	---------



NE-3, 16 JUL 2020 to 13 AUG 2020

NE-3, 16 JUL 2020 to 13 AUG 2020



CATEGORY	A	B	C	D
S-24	440-1 420	(500-1)	440-1 3/8 420	(500-1 3/8)
CIRCLING	560-1 521 (600-1)	600-1 561 (600-1)	620-1 1/2 581 (600-1 1/2)	660-2 621 (700-2)

ELEV 39 TDZE 20
HIRL Rwy 6-24, 14-32 TDZL/CL Rwy 6

PATUXENT RIVER, MARYLAND
Amdt 1 25MAY17

38°17'N - 76°25'W PATUXENT RIVER NAS (TRAPNELL FLD) (KNHK)

TACAN RWY 24