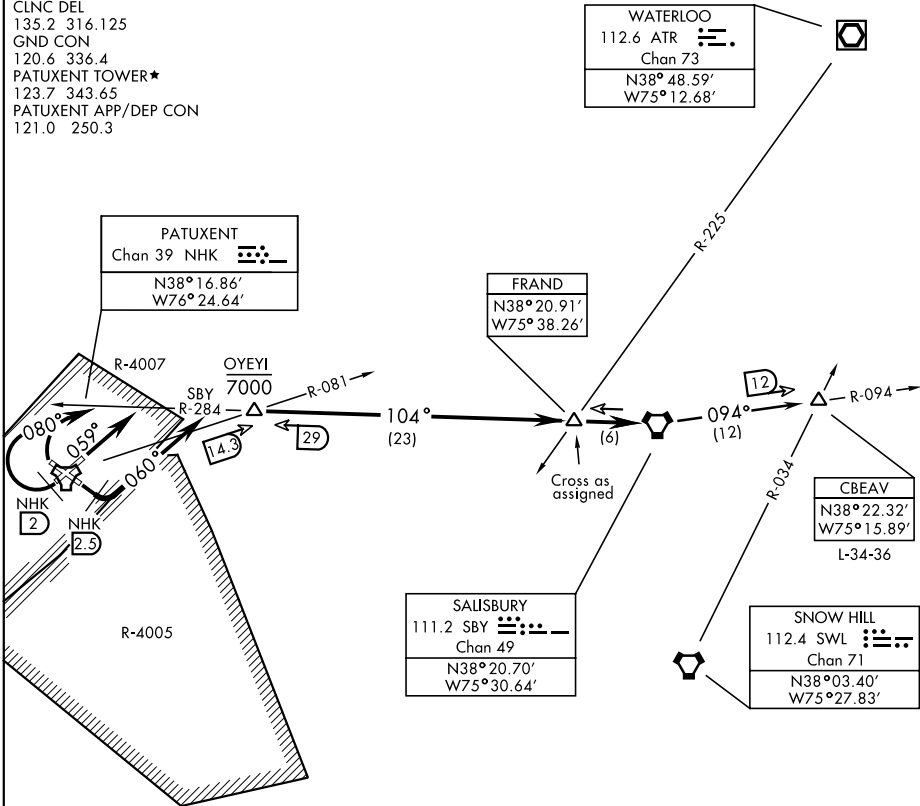


SALISBURY-SIX DEPARTURE (SBY6.SBY)

PATUXENT RIVER, MARYLAND

ATIS ★ 322.425
 CLNC DEL
 135.2 316.125
 GND CON
 120.6 336.4
 PATUXENT TOWER★
 123.7 343.65
 PATUXENT APP/DEP CON
 121.0 250.3

SHL-314 [USN]



NE-3, 16 JUL 2020 to 13 AUG 2020

NE-3, 16 JUL 2020 to 13 AUG 2020

Departure Rwy 2-20 not authorized.

DEPARTURE ROUTE DESCRIPTION

TAKE-OFF RWY 6: Climb to 6000 to heading 059°, thence...

TAKE-OFF RWY 14: Climbing left turn to 6000 to heading 060° within NHK TACAN 2.5 DME, thence...

TAKE-OFF RWY 24: Climb on heading 239° to NHK TACAN 2 DME, then climbing right turn to 6000 to heading 080°, thence...

TAKE-OFF RWY 32: Climbing right turn to 6000 to heading 080°, thence...

Intercept SBY VORTAC R-284, then on SBY R-284 to SBY. Cross FRAND as assigned. Then on assigned route or transition..

CBEAV TRANSITION (SBY6.CBEAV): Then on SBY R-094 to CBEAV.

SALISBURY-SIX DEPARTURE (SBY6.SBY)

PATUXENT RIVER, MARYLAND

Amdt 1 25MAY17

PATUXENT RIVER NAS (TRAPNELL FIELD) (KNHK)