

PATUXENT RIVER, MARYLAND

RNAV (GPS) RWY 6

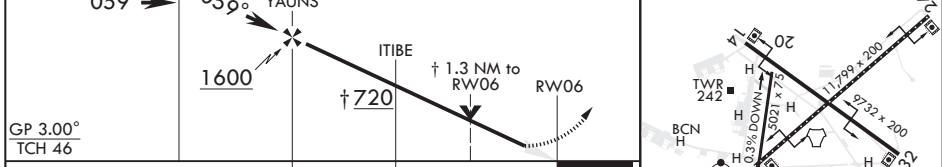
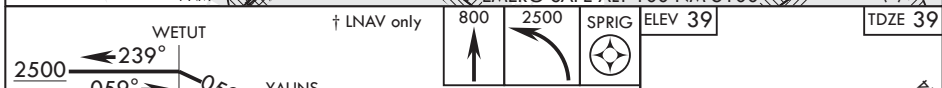
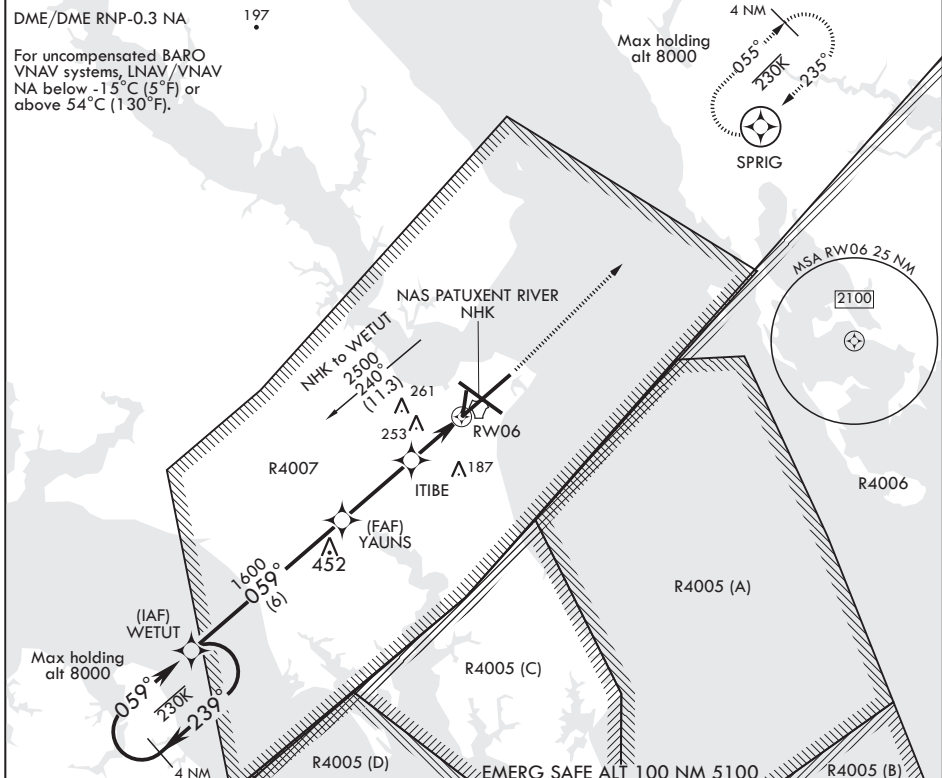
APCH CRS	Rwy Idg	11,799
059°	TDZE	39
	Arprt Elev	39

AL-314 (USN) PATUXENT RIVER NAS (TRAPNELL FLD) (KNHK)

▼ * When ALS inop, increase CAT ABCD vis to 1 5/8 miles.
 ** When ALS inop, increase CAT AB vis to 1 mile, CAT CD vis to 1 3/8 miles.

ALSF-1 MISSED APPROACH: Climb to 800 then climbing left turn to 2500 direct SPRIG and hold.

ATIS*	APP CON/DEP CON	TOWER*	GND CON	CLNC DEL	ASR/PAR
322.425	121.0 250.3	123.7 343.65	120.6 336.4	135.2 316.125	



GP 3.00°					TCH 46
CATEGORY	A	B	C	D	
LNAV/VNAV DA*	526-1 1/4		487	(500-1 1/4)	
LNAV MDA**	500-1/2	461 (500-1/2)	500-1	461	(500-1)
CIRCLING	560-1	600-1	620-1 1/2	660-2	
	521 (600-1)	561 (600-1)	581 (600-1 1/2)	621 (700-2)	

PATUXENT RIVER, MARYLAND 38°17'N - 76°25'W PATUXENT RIVER NAS (TRAPNELL FLD) (KNHK)

Amdt 1 09NOV17

RNAV (GPS) RWY 6

NE-3, 16 JUL 2020 to 13 AUG 2020

NE-3, 16 JUL 2020 to 13 AUG 2020