

PATUXENT RIVER, MARYLAND

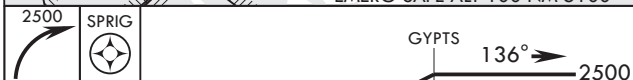
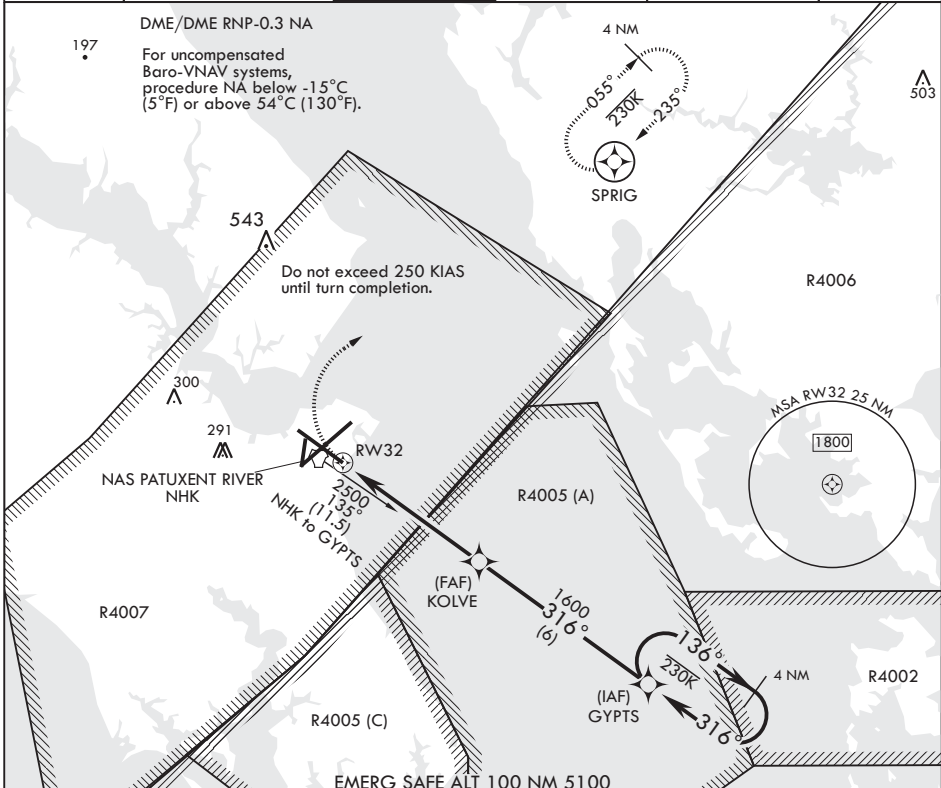
RNAV (GPS) RWY 32

APCH CRS 316°	Rwy Idg 9732
	TDZE 18
	Arprt Elev 39

AL-314 (USN) PATUXENT RIVER NAS (TRAPNELL FLD) (KNHK)

MISSED APPROACH: Climbing right turn to 2500 direct SPRIG, do not exceed 250 KIAS until turn completion and hold.

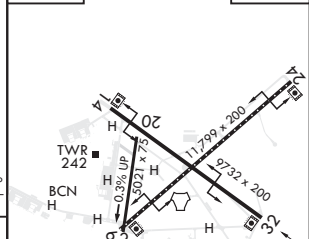
ATIS ★ 322.425	APP CON/DEP CON 121.0 250.3	TOWER ★ 123.7 343.65	GND CON 120.6 336.4	CLNC DEL 135.2 316.125	ASR/PAR
-------------------	--------------------------------	-------------------------	------------------------	---------------------------	---------



* LNAV only

ELEV 39

TDZE 18



CATEGORY	A	B	C	D
LNAV/VNAV DA	282-7/8 264 (300-7/8)	293-7/8 275 (300-7/8)	301-7/8 283 (300-7/8)	312-1 294 (300-1)
LNAV MDA	420-1	402 (400-1)	420-1 1/8	402 (400-1 1/8)
CRCLING	560-1 521 (600-1)	600-1 561 (600-1)	620-1 1/2 581 (600-1 1/2)	660-2 621 (700-2)

TDZL/CL Rwy 6
HIRL Rws 6-24, 14-32

PATUXENT RIVER, MARYLAND

38°17'N - 76°25'W PATUXENT RIVER NAS (TRAPNELL FLD) (KNHK)

Amdt 1 09NOV17

RNAV (GPS) RWY 32

NE-3, 16 JUL 2020 to 13 AUG 2020

NE-3, 16 JUL 2020 to 13 AUG 2020