

PATUXENT RIVER, MARYLAND

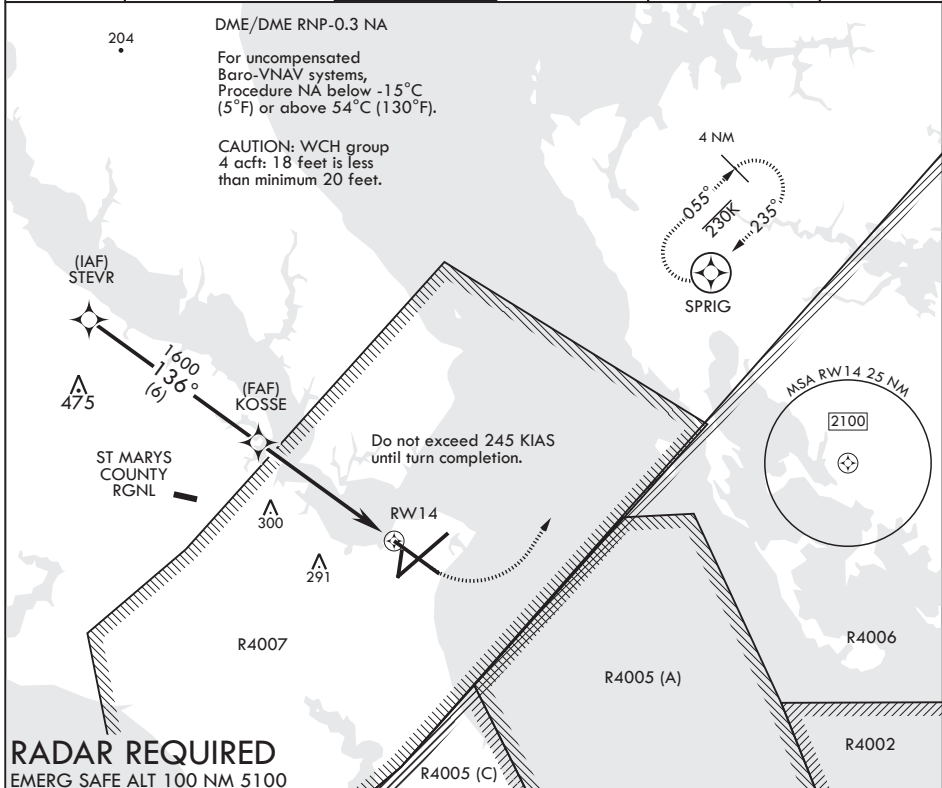
RNAV (GPS) RWY 14

APCH CRS 136°	Rwy Idg 9732
	TDZE 27
	Arpt Elev 39

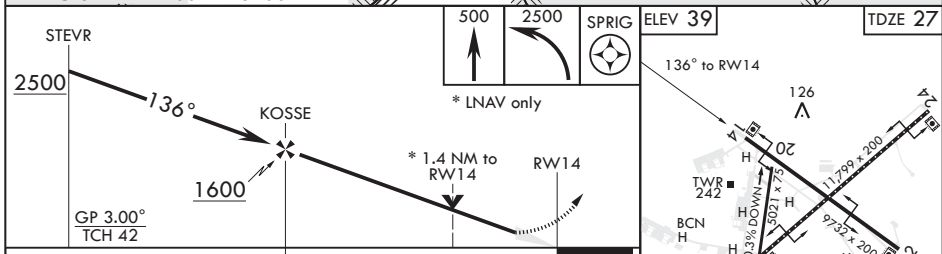
AL-314 (USN) PATUXENT RIVER NAS (TRAPNELL FLD) (KNHK)

MISSED APPROACH: Climb to 500 then climbing left turn to 2500 direct SPRIG, do not exceed 245 KIAS until turn completion and hold.

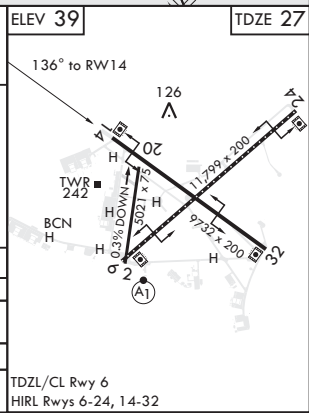
ATIS* 322.425	APP CON/DEP CON 121.0 250.3	TOWER* 123.7 343.65	GND CON 120.6 336.4	CLNC DEL 135.2 316.125	ASR/PAR
------------------	--------------------------------	------------------------	------------------------	---------------------------	---------



RADAR REQUIRED
EMERG SAFE ALT 100 NM 5100



CATEGORY	A	B	C	D
LNAV/VNAV DA	374-1 1/8 347 (400-1 1/8)	385-1 1/4 358 (400-1 1/4)	393-1 1/4 366 (400-1 1/4)	404-1 1/4 377 (400-1 1/4)
LNAV MDA	500-1 473	(500-1)	500-1 3/8 473	(500-1 3/8)
CI RCLING	560-1 521 (600-1)	600-1 561 (600-1)	620-1 1/2 581 (600-1 1/2)	660-2 621 (700-2)



PATUXENT RIVER, MARYLAND 38°17'N - 76°25'W PATUXENT RIVER NAS (TRAPNELL FLD) (KNHK)

Amdt 1 09NOV17

RNAV (GPS) RWY 14

NE-3, 16 JUL 2020 to 13 AUG 2020

NE-3, 16 JUL 2020 to 13 AUG 2020