

ILS RWY 6

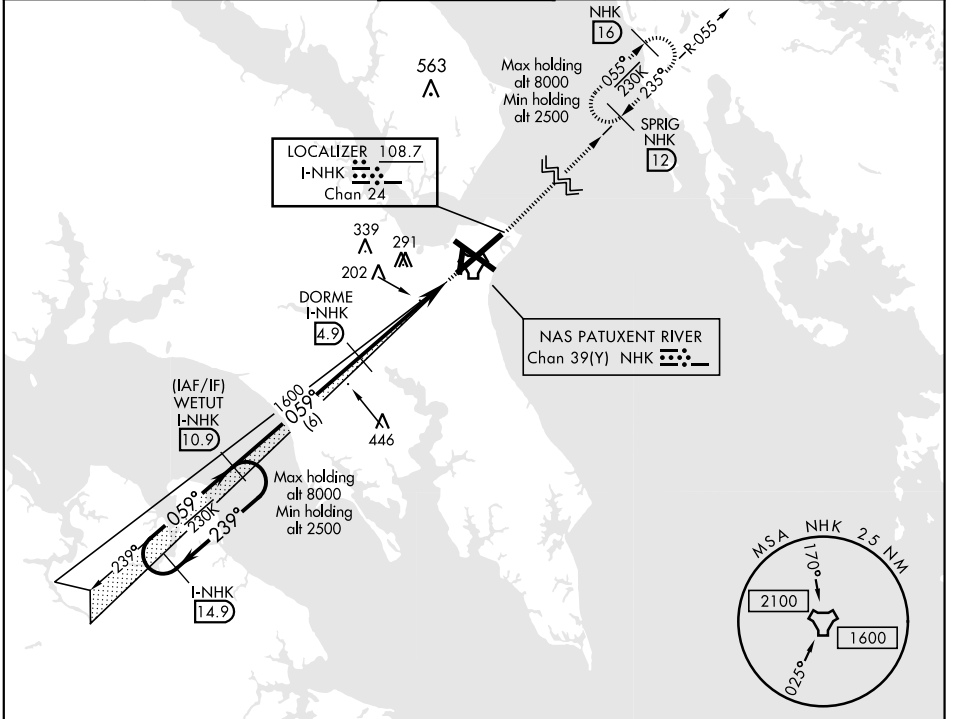
PATUXENT RIVER, MARYLAND

LOC/DME I-NHK 108.7 Chan 24	APCH CRS 059°	Rwy ldg 11,799 TDZE 39 Arprt Elev 39
---	-------------------------	---

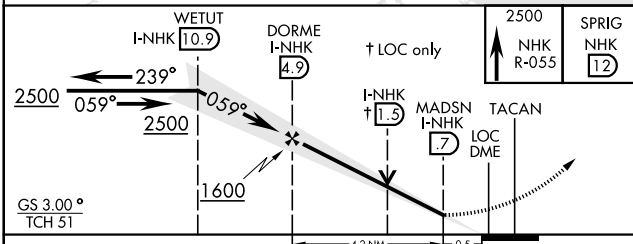
AL-314 [USN] PATUXENT RIVER NAS (TRAPNELL FIELD) (KNHK)

<p>▼ * When ALS inop, increase vis to 3/4 mile. ** When ALS inop, increase CAT AB vis to 1 mile; CAT CD vis to 1 3/8 miles.</p>	<p>ALSF-1 </p>	<p>MISSED APPROACH: Climb to 2500 to join NHK TACAN R-055 direct SPRIG and hold.</p>
---	--------------------	--

<p>ATIS ★ 322.425</p>	<p>PATUXENT APP/DEP CON 121.0 250.3</p>	<p>PATUXENT TOWER ★ 123.7 343.65</p>	<p>GND CON 120.6 336.4</p>	<p>CLNC DEL 135.2 316.125</p>	<p>ASR/PAR</p>
----------------------------------	--	---	---------------------------------------	--	----------------

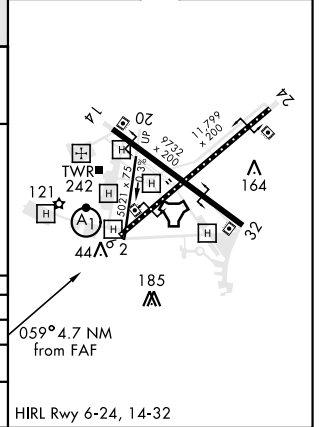


EMERG SAFE ALT 100 NM 5100



ELEV 39	TDZE 39
---------	---------

CATEGORY	A	B	C	D
S-ILS 6 *	239-1/2 (200-1/2)			
S-LOC 6 **	500-1/2	461 (500-1/2)	500-1	461 (500-1)
CIRCLING	560-1	600-1	620-1 1/2	680-2
	521 (600-1)	561 (600-1)	581 (600-1 1/2)	641 (700-2)



PATUXENT RIVER, MARYLAND 38° 17' N-76° 25' W PATUXENT RIVER NAS (TRAPNELL FIELD) (KNHK)

Orig 21MAY20

ILS RWY 6

NE-3, 16 JUL 2020 to 13 AUG 2020

NE-3, 16 JUL 2020 to 13 AUG 2020