

PATUXENT RIVER, MARYLAND

HI-TACAN RWY 6

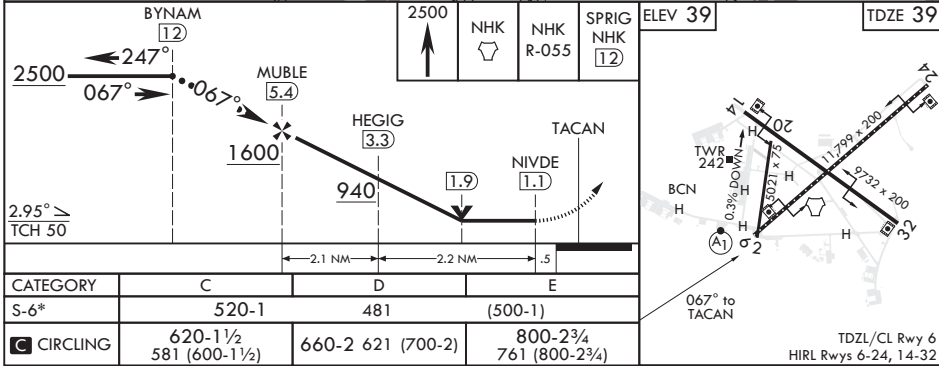
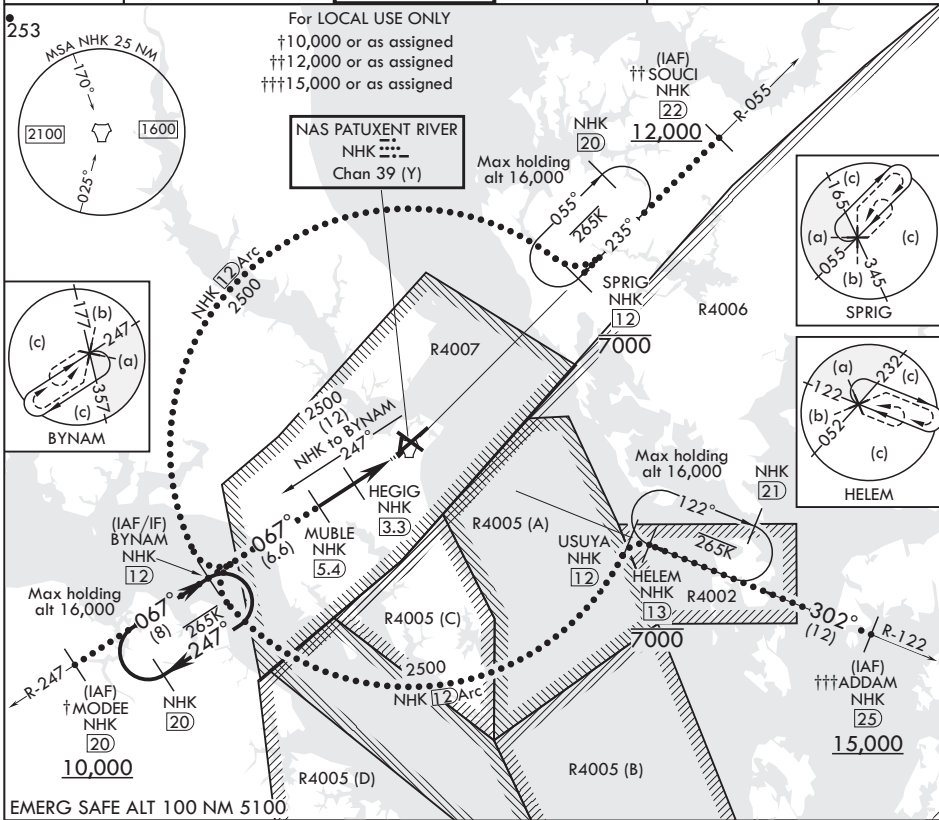
TACAN NHK Chan 39 (Y)	APCH CRS 067°	Rwy ldg TDZE 11,799	Arprt Elev 39
-----------------------	---------------	---------------------	---------------

JAL-314 (USN) PATUXENT RIVER NAS (TRAPNELL FLD) (KNHK)

⚠ * When ALS inop, increase CAT CDE vis to 1 3/8 miles.

ALSF-1 MISSED APPROACH: Climb to 2500 direct NHK TACAN and NHK R-055 to SPRIG and hold.

ATIS* 322.425	APP CON/DEP CON 121.0 250.3	TOWER* 123.7 343.65	GND CON 120.6 336.4	CLNC DEL 135.2 316.125	ASR/PAR
---------------	-----------------------------	---------------------	---------------------	------------------------	---------



CATEGORY	C	D	E
S-6*	520-1	481	(500-1)
Ⓢ CIRCLING	620-1½ 581 (600-1½)	660-2 621 (700-2)	800-2¾ 761 (800-2¾)

PATUXENT RIVER, MARYLAND
Amdt 1 25MAY17

38°17'N - 76°25'W PATUXENT RIVER NAS (TRAPNELL FLD) (KNHK)

HI-TACAN RWY 6

NE-3, 16 JUL 2020 to 13 AUG 2020

NE-3, 16 JUL 2020 to 13 AUG 2020