

PATUXENT RIVER, MARYLAND

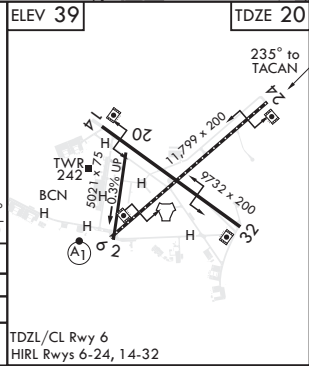
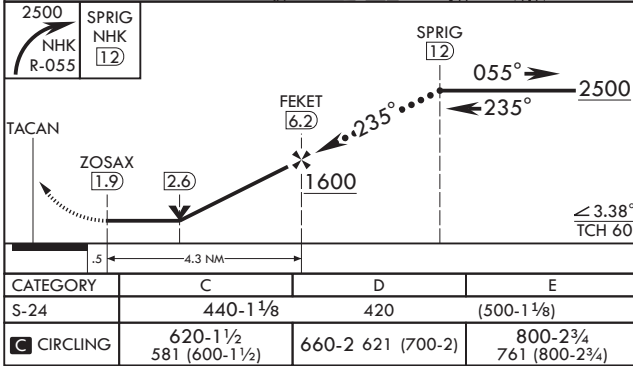
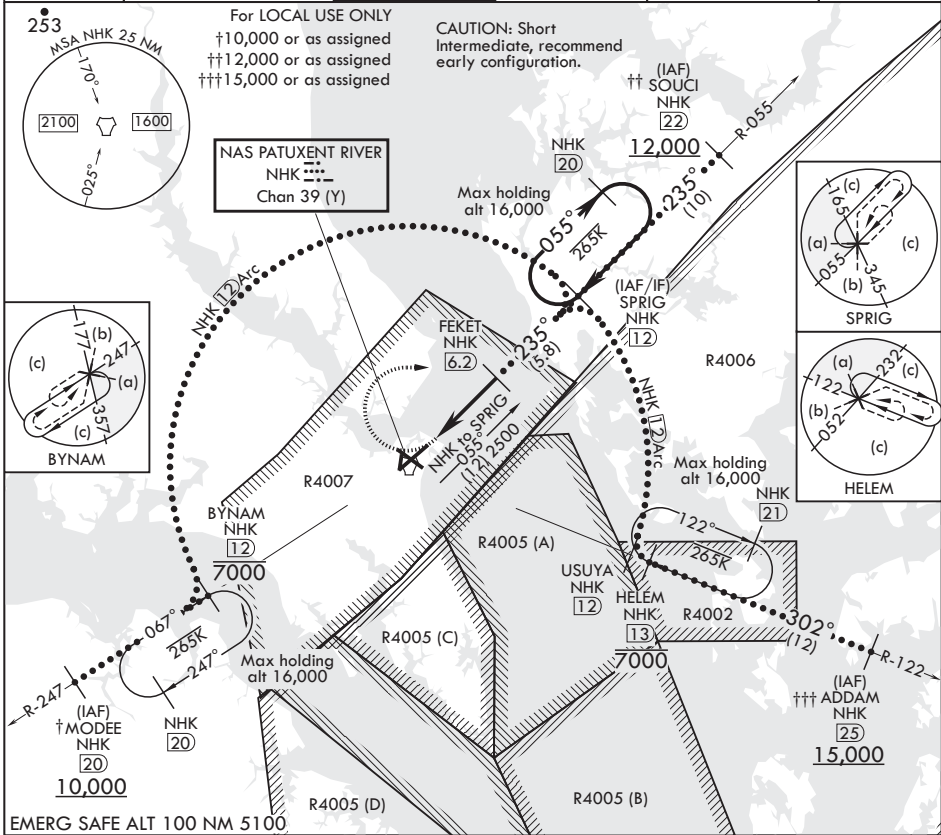
HI-TACAN RWY 24

TACAN NHK Chan 39 (Y)	APCH CRS 235°	Rwy ldg TDZE 20 Arprt Elev 39
-----------------------	---------------	----------------------------------

JAL-314 (USN) PATUXENT RIVER NAS (TRAPNELL FLD) (KNHK)

MISSED APPROACH: Climbing right turn to 2500, intercept NHK TACAN R-055 to SPRIG and hold.

ATIS* 322.425	APP CON/DEP CON 121.0 250.3	TOWER* 123.7 343.65	GND CON 120.6 336.4	CLNC DEL 135.2 316.125	ASR/PAR
---------------	-----------------------------	---------------------	---------------------	------------------------	---------



PATUXENT RIVER, MARYLAND 38°17'N - 76°25'W PATUXENT RIVER NAS (TRAPNELL FLD) (KNHK)

Amdt 1 25MAY17

HI-TACAN RWY 24

NE-3, 16 JUL 2020 to 13 AUG 2020

NE-3, 16 JUL 2020 to 13 AUG 2020