

PATUXENT RIVER, MARYLAND

HI-TACAN RWY 14

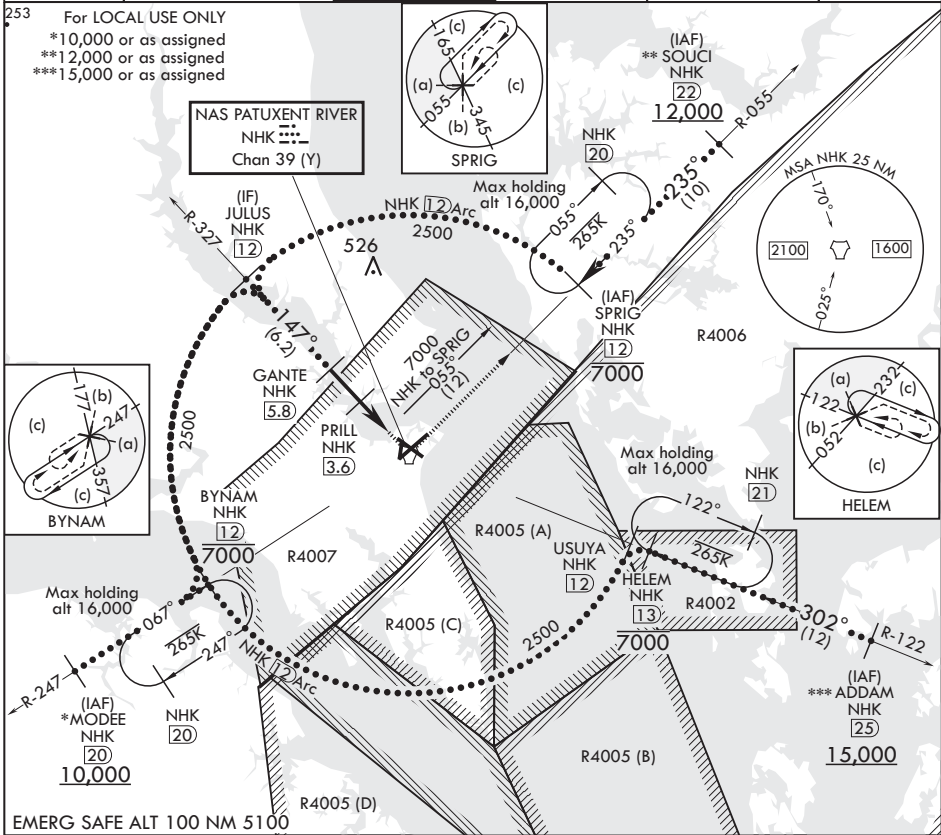
TACAN NHK Chan 39 (Y)	APCH CRS 147°	Rwy ldg TDZE 27 Arpt Elev 39	9732
-----------------------	---------------	---------------------------------	------

JAL-314 (USN) PATUXENT RIVER NAS (TRAPNELL FLD) (KNHK)

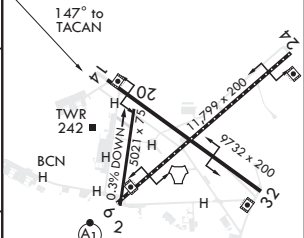
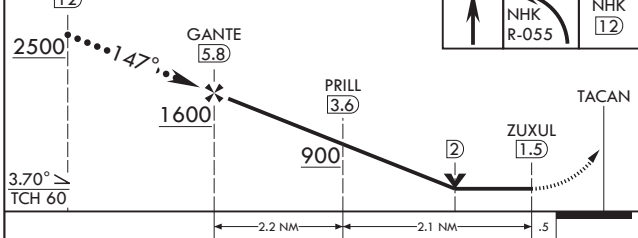
MISSED APPROACH: Climb to 500, then climbing left turn to 2500 on NHK TACAN R-055 to SPRIG and hold.

ATIS* 322.425	APP CON/DEP CON 121.0 250.3	TOWER* 123.7 343.65	GND CON 120.6 336.4	CLNC DEL 135.2 316.125	ASR/PAR
---------------	-----------------------------	---------------------	---------------------	------------------------	---------

253 For LOCAL USE ONLY
 *10,000 or as assigned
 **12,000 or as assigned
 ***15,000 or as assigned



EMERG SAFE ALT 100 NM 5100



CATEGORY	C	D	E	
S-14	400-1	373	(400-1)	
CIRCLING	620-1½ 581 (600-1½)	660-2 621 (700-2)	800-2¾ 761 (800-2¾)	TDZL/CL Rwy 6 HIRL Rws 6-24, 14-32

PATUXENT RIVER, MARYLAND 38°17'N - 76°25'W PATUXENT RIVER NAS (TRAPNELL FLD) (KNHK)

Amdt 1 25MAY17

HI-TACAN RWY 14

NE-3, 16 JUL 2020 to 13 AUG 2020

NE-3, 16 JUL 2020 to 13 AUG 2020