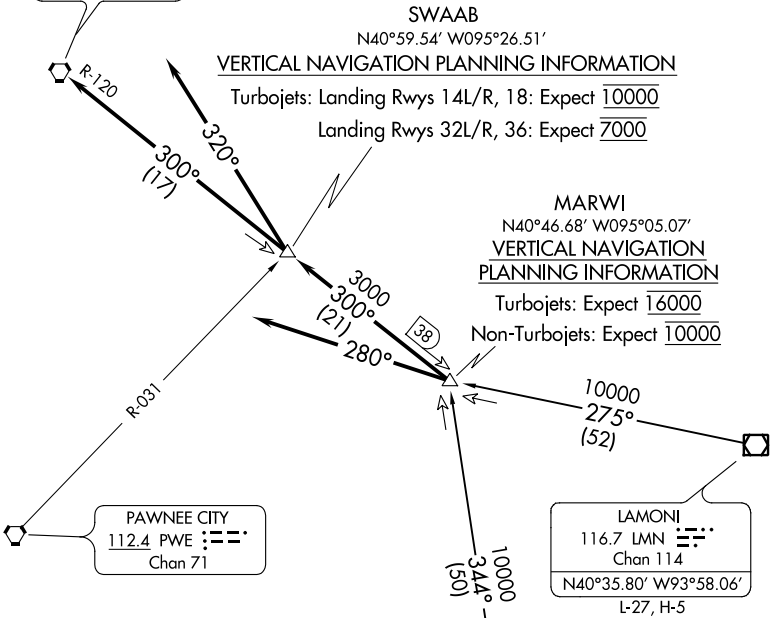


EPPLEY AIRFIELD

| |
|------------|
| OMAHA |
| 116.3 OVR |
| Chan 110 |
| N41°10.03' |
| W95°44.21' |

OFFUTT AFB



OMAHA APP CON
 124.5 263.0 EAST
 120.1 354.05 WEST
 KOFF ATIS
 126.025 273.5
 OMA D-ATIS
 120.4

NC-2, 16 JUL 2020 to 13 AUG 2020

NC-2, 16 JUL 2020 to 13 AUG 2020

ARRIVAL ROUTE DESCRIPTION

LAMONI TRANSITION (LMN.MARWI3): From over LMN VOR/DME via LMN R-275 to MARWI INT.

ST. JOSEPH TRANSITION (STJ.MARWI3): From over STJ VORTAC via STJ R-344 to MARWI INT.

LANDING EPPLEY AIRFIELD:

RUNWAYS 14L/R, 18: Depart MARWI INT via OVR R-120 to SWAAB INT/OVR 17 DME then via heading 320°. Thence

RUNWAYS 32L/R, 36: Depart MARWI INT via OVR R-120 to SWAAB INT/OVR 17 DME, then via OVR R-120 to OVR VORTAC. Thence

LANDING OFFUTT AFB:

Depart MARWI INT via heading 280°. Thence
. . . . Expect RADAR vectors to final approach course.

| |
|-----------------------|
| LAMONI |
| 116.7 LMN |
| Chan 114 |
| N40°35.80' W93°58.06' |
| L-27, H-5 |

| |
|-----------------------|
| ST JOSEPH |
| 115.5 STJ |
| Chan 102 |
| N39°57.63' W94°55.51' |
| L-10, H-5 |

NOTE: RADAR required.

NOTE: Chart not to scale.