

WAAS CH <b>93535</b> <b>W30A</b>	APP CRS <b>296°</b>	Rwy Idg <b>10000</b> TDZE <b>9</b> Apt Elev <b>9</b>
--	------------------------	--

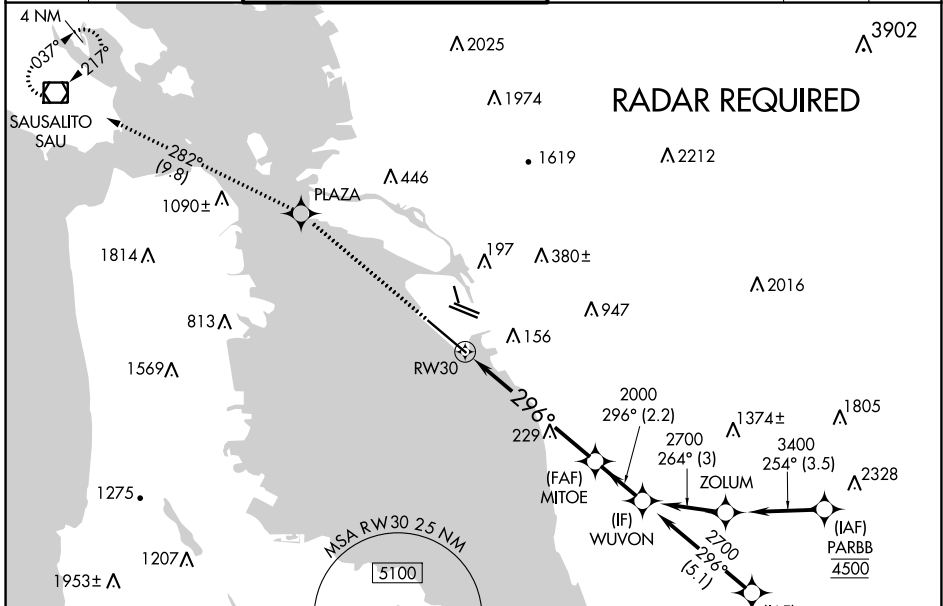
# RNAV (GPS) Y RWY 30

METROPOLITAN OAKLAND INTL (OAK)

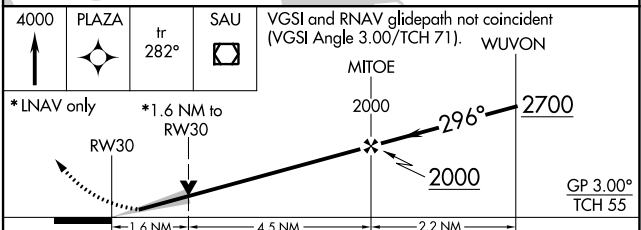
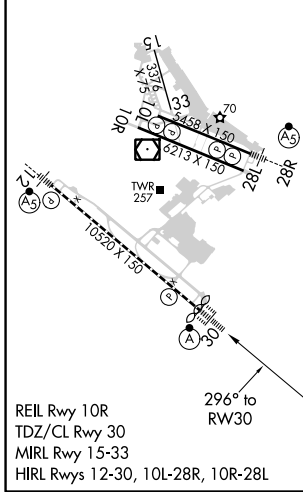
**⚠** For uncompensated Baro-VNAV systems, LNAV/VNAV NA below 1°C (34°F) or above 54°C (130°F). DME/DME RNP-0.3 NA. For inop ALS, increase LNAV/VNAV all Cats visibility to RVR 4500 and LNAV Cat C/D visibility to 1 3/8 SM.

**ALSIF-2**  
**MISSED APPROACH:** Climb to 4000 direct PLAZA and on track 282° to SAU VOR/DME and hold, continue climb-in-hold to 4000.

D-ATIS <b>133.775</b>	NORCAL APP CON <b>125.35 263.15</b>	OAKLAND TOWER <b>118.3 291.65</b> (Rwys 10L/R-28L/R, 15-33) <b>127.2 256.9</b> (Rwy 12-30)	GND CON <b>121.9</b> (Rwys 10L/R-28L/R, 15-33) <b>121.75</b> (Rwy 12-30)	CLNC DEL <b>121.1</b>	CPDLC
--------------------------	--	--	--	--------------------------	-------



ELEV <b>9</b>	<b>D</b>	TDZE <b>9</b>
---------------	----------	---------------



CATEGORY	A	B	C	D
LPV DA		209/18	200 (200-1/2)	
LNAV/VNAV DA		283/24	274 (300-1/2)	
LNAV MDA	580/24	571 (600-1/2)	580-1 1/4	571 (600-1 1/4)
<b>C</b> CIRCLING	580-1	571 (600-1)	660-1 3/4 651 (700-1 3/4)	1400-3 1391 (1400-3)

SW-2, 16 JUL 2020 to 13 AUG 2020

SW-2, 16 JUL 2020 to 13 AUG 2020