

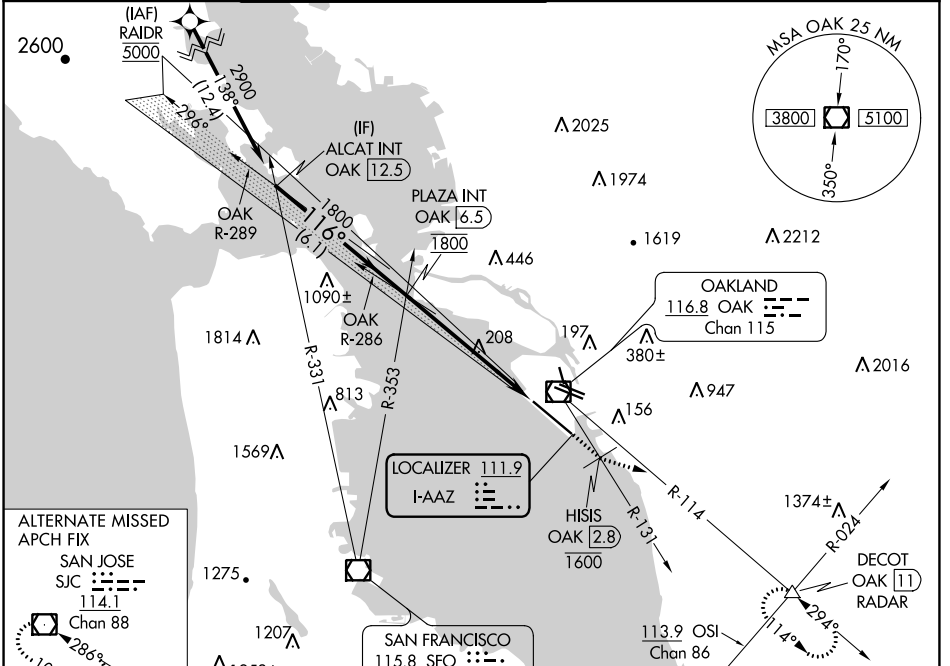
# ILS or LOC RWY 12

METROPOLITAN OAKLAND INTL (OAK)

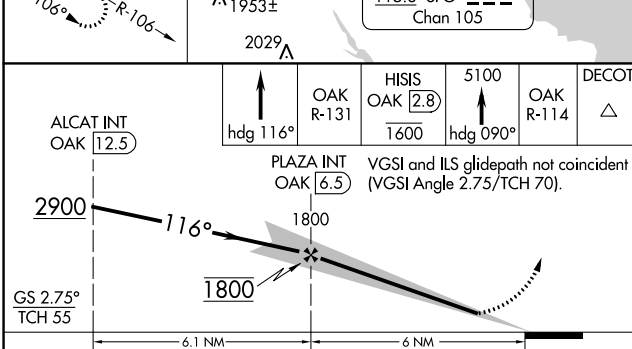
LOC I-AAZ <b>111.9</b>	APP CRS <b>116°</b>	Rwy Idg <b>10000</b>
	TDZE <b>9</b>	
	Apt Elev <b>9</b>	

DME required. From RAIDR: RNAV 1-GPS required. MALS R-131 to cross HISIS/OAK 2.8 DME at or below 1600 then climb to 5100 on heading 090° and on OAK VOR/DME R-114 to DECOT INT/OAK 11 DME/RADAR and hold, continue climb-in-hold to 5100.

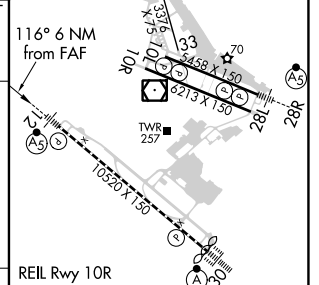
D-ATIS <b>133.775</b>	NORCAL APP CON <b>125.35 263.15</b>	OAKLAND TOWER <b>118.3 291.65</b> (Rwys 10L/R-28L/R, 15-33) <b>127.2 256.9</b> (Rwy 12-30)	GND CON <b>121.9</b> (Rwys 10L/R-28L/R, 15-33) <b>121.75</b> (Rwy 12-30)	CLNC DEL <b>121.1</b>	CPDLC
--------------------------	----------------------------------------	--------------------------------------------------------------------------------------------------	--------------------------------------------------------------------------------	--------------------------	-------



ALTERNATE MISSED APCH FIX  
SAN JOSE SJC  
Chan 88  
114.1  
286° R-106  
106°



ELEV 9	TDZE 9
--------	--------



CATEGORY	A	B	C	D
S-ILS 12*	209/24		200 (200-½)	
S-LOC 12	460/24 451 (500-½)		460/45 451 (500-¾)	
CIRCLING	560-1 551 (600-1)		660-1¼ 651 (700-1¼) 1400-3 1391 (1400-3)	

REIL Rwy 10R	TDZ/CL Rwy 30	MIRL Rwy 15-33	HIRL Rwys 12-30, 10L-28R, 10R-28L
FAF to MAP 6 NM			
Knots	60	90	120 150 180
Min:Sec	6:00	4:00	3:00 2:24 2:00

SW-2, 16 JUL 2020 to 13 AUG 2020

SW-2, 16 JUL 2020 to 13 AUG 2020