

D-ATIS 133.775
CLNC DEL
121.1
CPDLC
GND CON
121.9 (Rwys 28L/R)
121.75 (Rwy 30)
OAKLAND TOWER
118.3 291.65 (Rwys 28L/R)
127.2 256.9 (Rwy 30)
NORCAL DEP CON
135.1 307.2

**TOP ALTITUDE:
10000**

DEPARTURE ROUTE DESCRIPTION

TAKEOFF RUNWAYS 28L, 28R: Climb heading 278° to 520, then direct to cross LEJAY at or below 2000, then on track 296° to CNDEL, then left turn direct to cross PORTE at or below 10000. Thence. . . .

TAKEOFF RUNWAY 30: Climb heading 296° to 520, then direct to cross LEJAY at or below 2000, then on track 296° to CNDEL, then left turn direct to cross PORTE at or below 10000. Thence. . . .

. . . . on (transition). Maintain 10000, expect filed altitude 10 minutes after departure.

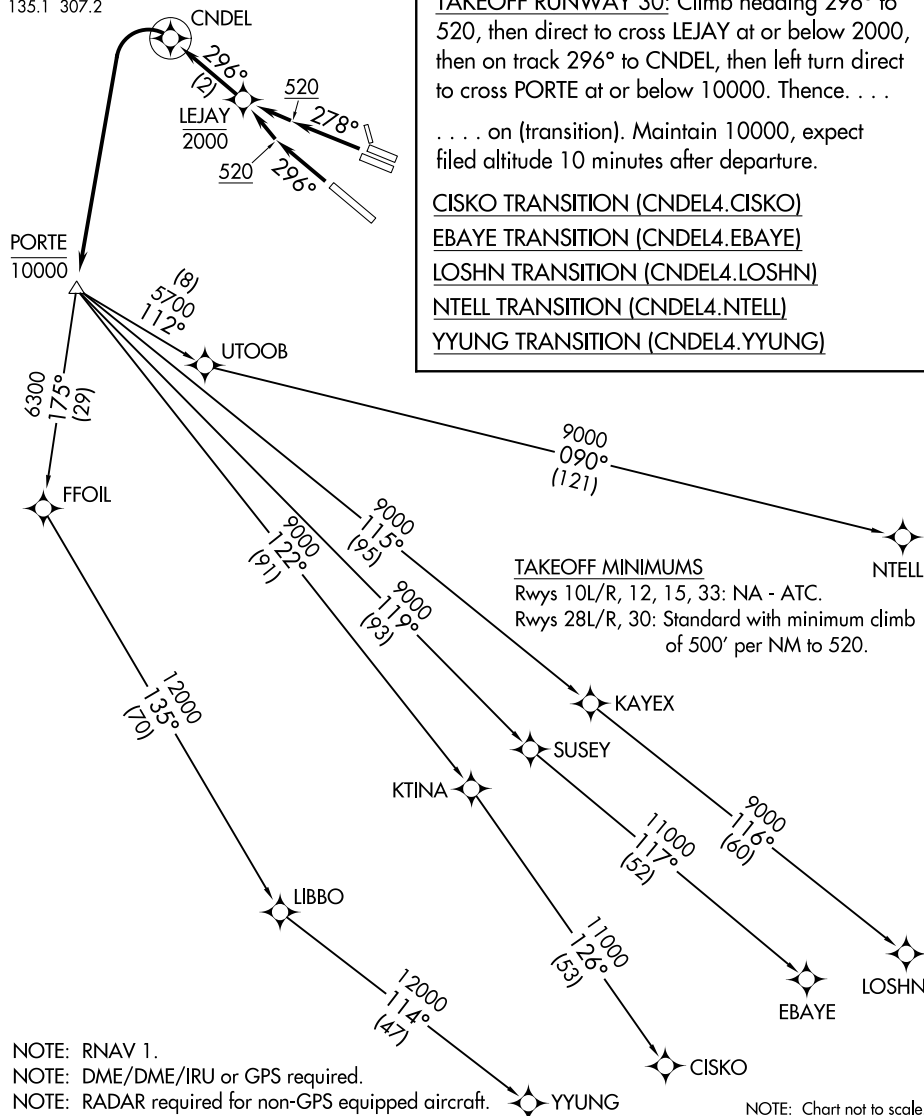
CISKO TRANSITION (CNDEL4.CISKO)

EBAYE TRANSITION (CNDEL4.EBAYE)

LOSHN TRANSITION (CNDEL4.LOSHN)

NTELL TRANSITION (CNDEL4.NTELL)

YYUNG TRANSITION (CNDEL4.YYUNG)



NOTE: RNAV 1.
NOTE: DME/DME/IRU or GPS required.
NOTE: RADAR required for non-GPS equipped aircraft.

NOTE: Chart not to scale.

SW-2, 16 JUL 2020 to 13 AUG 2020

SW-2, 16 JUL 2020 to 13 AUG 2020