

# BANND TWO ARRIVAL (RNAV) Arrival Routes

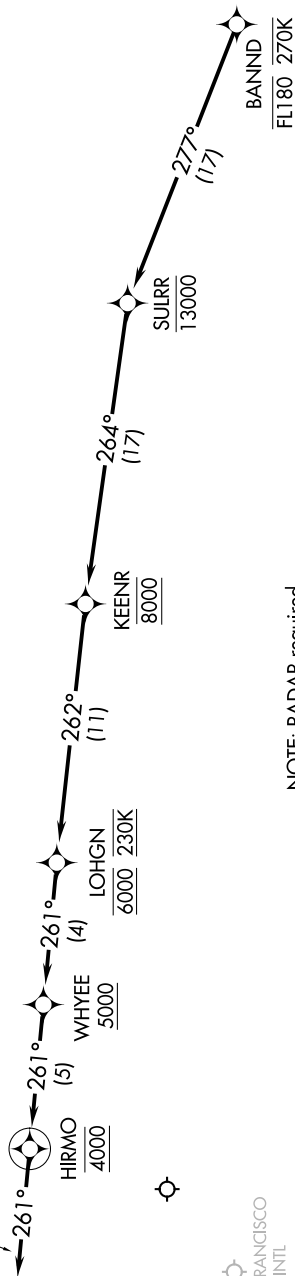
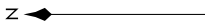
SW-2, 16 JUL 2020 to 13 AUG 2020

## ARRIVAL ROUTE DESCRIPTION

**LANDING RUNWAY 12:** From BANND on track 277° to cross SULRR at or below 13000, then on track 264° to cross KEENR at 8000, then on track 262° to cross LOHGN at 6000 and at 230K, then on track 261° to cross WHYEE at or above 5000, then on track 261° to cross HIRMO at 4000, then on track 261°. Expect RADAR vectors to final approach course.

- OAKLAND CENTER  
134.37 281.5
- NORCAL APP CON  
124.8 263.15
- D-ATIS  
133.775
- OAKLAND TOWER  
127.2 256.9 (Rwy 12)
- GND CON  
121.75 (Rwy 12)

KOAK Ldg Rwy 12



NOTE: RADAR required.  
 NOTE: RNAV 1.  
 NOTE: DME/DME/IRU or GPS required.

SAN FRANCISCO  
INTL

NORMAN Y MINETA  
SAN JOSE INTL

NOTE: Chart not to scale.

# BANND TWO ARRIVAL (RNAV) Arrival Routes

SW-2, 16 JUL 2020 to 13 AUG 2020