

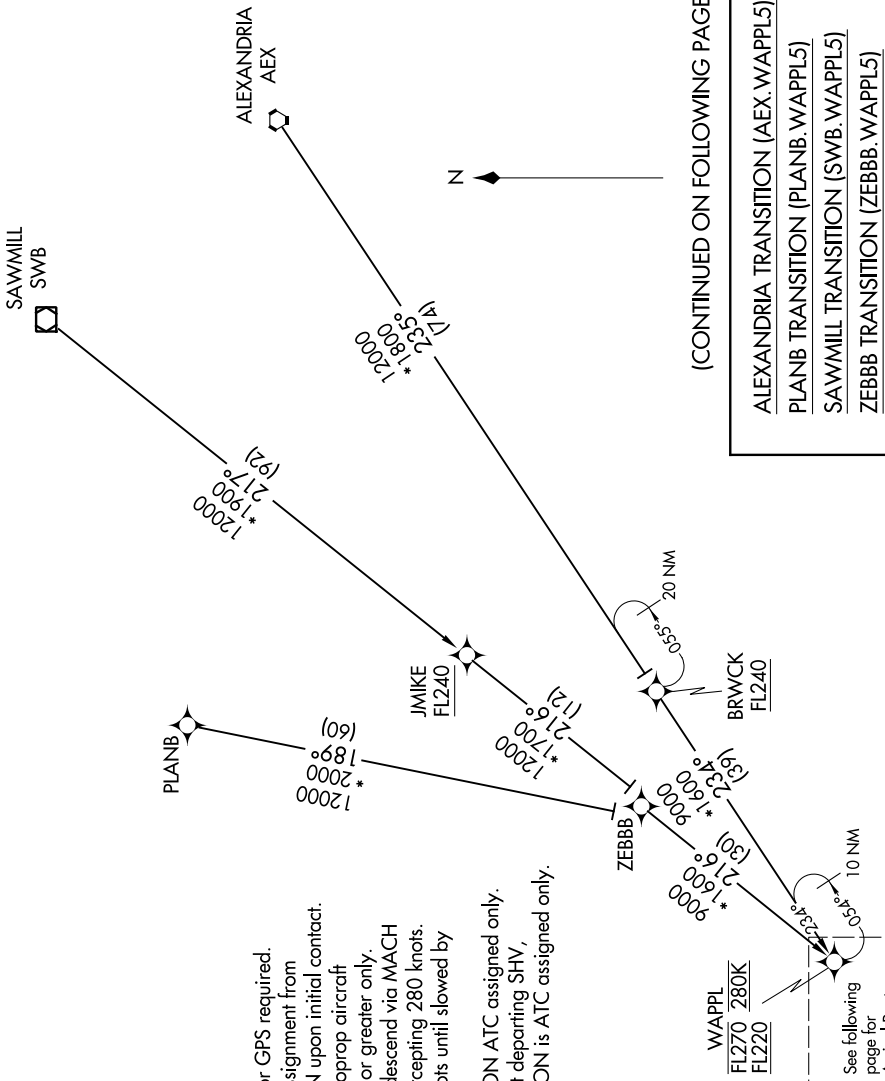
WAPPL FIVE ARRIVAL (RNAV) Transition Routes

HOUSTON, TEXAS

SC-5, 16 JUL 2020 to 13 AUG 2020

HOUSTON APP CON
 120.05 379.1
 EFD ATIS
 135.575 269.9
 HOUD-ATIS
 124.6

- NOTE: RADAR required.
 NOTE: RNAV 1.
 NOTE: DME/DME/IRU or GPS required.
 NOTE: Expect runway assignment from Houston TRACON upon initial contact.
 NOTE: Turbojet and turboprop aircraft capable of 280K or greater only.
 NOTE: Turbojet aircraft descend via MACH number until intercepting 280 knots. Maintain 280 knots until slowed by the STAR.
 NOTE: ZEBBB TRANSITION ATC assigned only.
 NOTE: Except for aircraft departing SHV, PLANB TRANSITION is ATC assigned only. Do not file.



NOTE: Chart not to scale.

SC-5, 16 JUL 2020 to 13 AUG 2020

WAPPL FIVE ARRIVAL (RNAV) Transition Routes

HOUSTON, TEXAS