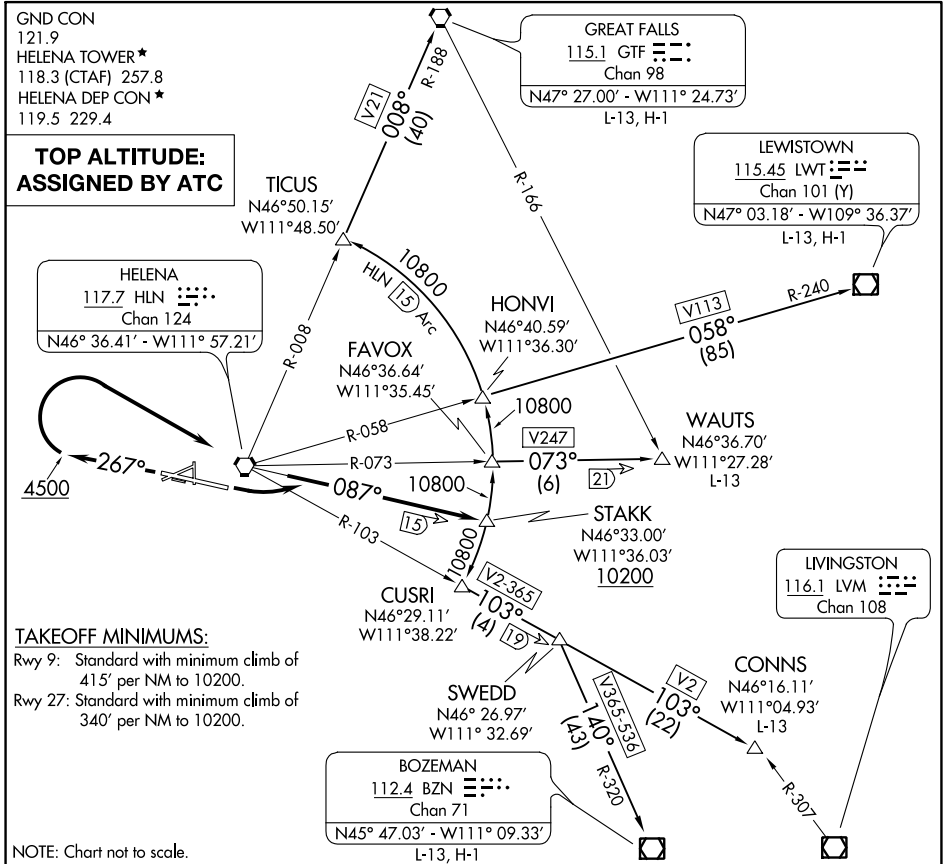


STAKK FOUR DEPARTURE

HELENA RGNL (HLN)
HELENA, MONTANA



NW-1, 16 JUL 2020 to 13 AUG 2020

NW-1, 16 JUL 2020 to 13 AUG 2020

TAKEOFF MINIMUMS:
 Rwy 9: Standard with minimum climb of 415' per NM to 10200.
 Rwy 27: Standard with minimum climb of 340' per NM to 10200.

NOTE: Chart not to scale.

DEPARTURE ROUTE DESCRIPTION

- TAKEOFF RUNWAY 9:** Climbing left turn to intercept HLN R-087 to cross STAKK at or above 10200. Thence via transition.
- TAKEOFF RUNWAY 27:** Climb heading 267° to 4500 then climbing right turn direct HLN VORTAC. Continue climb on HLN R-087 to cross STAKK at or above 10200. Thence via transition.
- BOZEMAN TRANSITION (STAKK4.BZN):** From over STAKK on 15 DME Arc to CUSRI INT, then on HLN R-103 to SWEDD INT, then on BZN R-320 to BZN VOR/DME.
- CONNS TRANSITION (STAKK4.CONNS):** From over STAKK on 15 DME Arc to CUSRI INT, then on HLN R-103 to SWEDD INT, then on HLN R-103 to CONNS INT.
- GREAT FALLS TRANSITION (STAKK4.GTF):** From over STAKK on 15 DME Arc to FAVOX, then on 15 DME Arc to HONVI, then on 15 DME Arc to TICUS, then on HLN R-008 and GTF R-188 to GTF VORTAC.
- LEWISTOWN TRANSITION (STAKK4.LWT):** From over STAKK on 15 DME Arc to FAVOX, then on 15 DME Arc to HONVI, then on HLN R-058 and LWT R-240 to LWT VOR/DME.
- WAUTS TRANSITION (STAKK4.WAUTS):** From over STAKK on 15 DME Arc to FAVOX, then on HLN R-073 to WAUTS INT.