

WAAS CH 69405 W27A	APP CRS 267°	Rwy Idg TDZE Apt Elev	9000 3852 3877
--	------------------------	-----------------------------	---

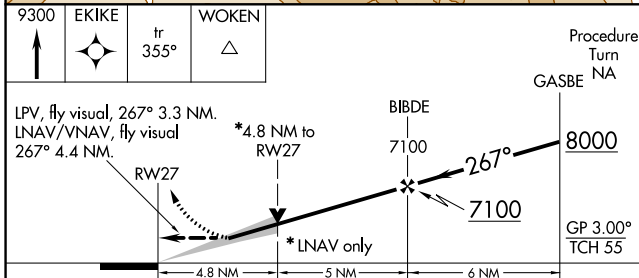
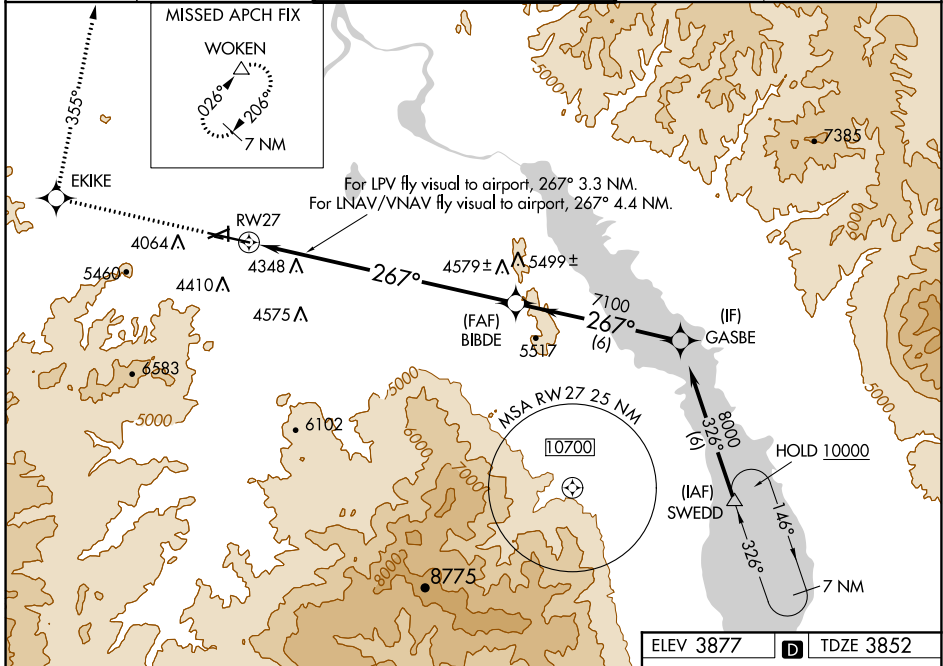
RNAV (GPS) X RWY 27

HELENA RGNL (HLN)

⚠ Circling NA for Cat D south of Rwy 9-27. For uncompensated Baro-VNAV systems, LNAV/VNAV NA below -22°C (-7°F) or above 42°C (107°F). DME/DME RNP-0.3 NA. Inoperative table does not apply to LNAV Cats A-B. Circling to Rwy 5, 23, 35 NA at night.

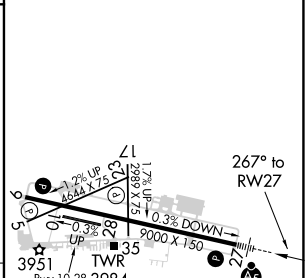
MALSR MISSED APPROACH: Climb to 9300 direct EKIKE and on track 355° to WOKEN and hold, continue climb-in-hold to 9300.

ATIS 120.4	HELENA APP CON * 119.5 229.4	HELENA TOWER * 118.3 (CTAF) 257.8	GND CON 121.9	UNICOM 122.95
----------------------	--	---	-------------------------	-------------------------



ELEV 3877	D	TDZE 3852
-----------	----------	-----------

CATEGORY	A	B	C	D
LPV DA	4965-2 1113 (1100-2)		4965-3 1113 (1100-3)	
LNAV/VNAV DA	5289-2 1437 (1500-2)		5289-3 1437 (1500-3)	
LNAV MDA	5440-1¼ 1588 (1600-1¼)	5440-1½ 1588 (1600-1½)	5440-2½ 1588 (1600-2½)	
C CIRCLING	5440-1¼ 1563 (1600-1¼)	5440-1½ 1563 (1600-1½)	5920-3 2043 (2100-3)	



REIL Rws 9, 17 and 35
MIRL Rws 5-23 and 17-35
HIRL Rwy 9-27

NW-1, 16 JUL 2020 to 13 AUG 2020

NW-1, 16 JUL 2020 to 13 AUG 2020