

APP CRS	Rwy Idg	<b>9000</b>
<b>087°</b>	TDZE	<b>3864</b>
	Apt Elev	<b>3877</b>

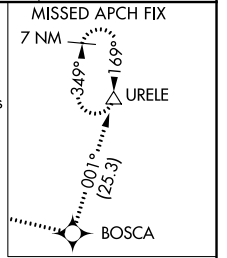
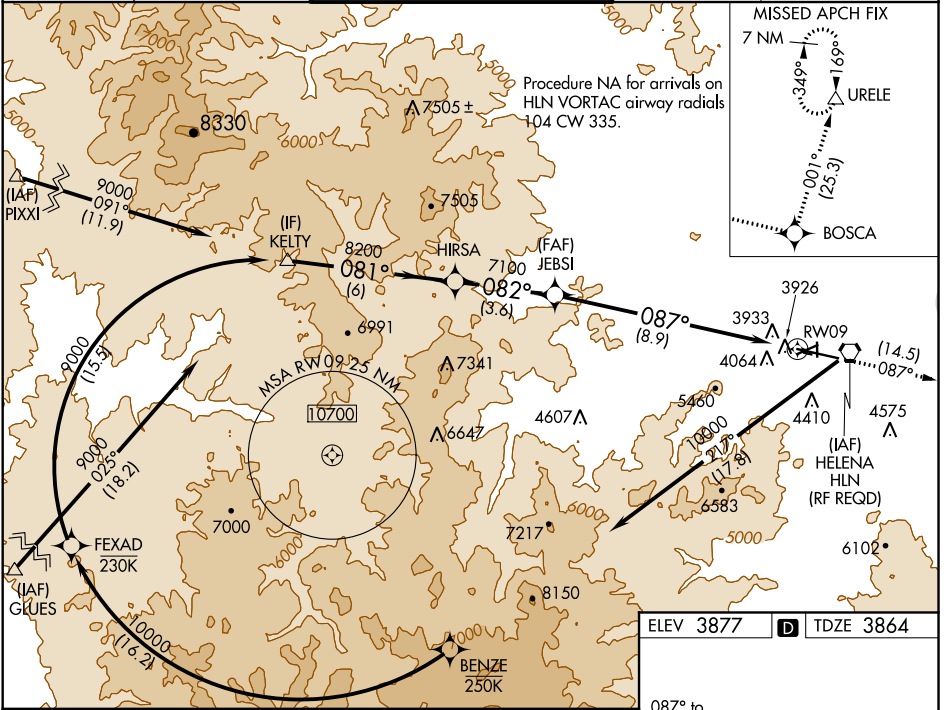
# RNAV (RNP) Z RWY 9

HELENA RGNL (HLN)

**GPS required.** For uncompensated Baro-VNAV systems, procedure NA below -22°C (-7°F) or above 54°C (130°F). When VGSI inoperative, procedure NA at night.  
 \*Missed approach requires minimum climb of 260' per NM to 4300.

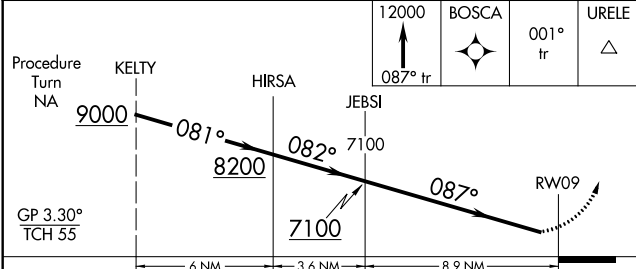
**MISSED APPROACH:** Climb to 12000 via 087° track to BOSCA and via 001° track to URELE and hold, continue climb-in-hold to 12000.

ATIS <b>120.4</b>	HELENA APP CON* <b>119.5 229.4</b>	HELENA TOWER* <b>118.3 (CTAF) 257.8</b>	GND CON <b>121.9</b>	UNICOM <b>122.95</b>
----------------------	---------------------------------------	--	-------------------------	-------------------------

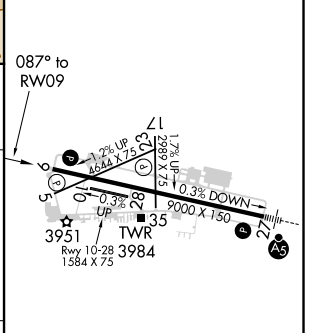


NW-1, 16 JUL 2020 to 13 AUG 2020

NW-1, 16 JUL 2020 to 13 AUG 2020



ELEV 3877	TDZE 3864
-----------	-----------



GP 3.30° TCH 55	KELTY			HIRSA		JEBSI		RWY 9	
	081°			082°		087°		087°	
	9000			8200		7100		12000	
	6 NM			3.6 NM		8.9 NM			
CATEGORY	A		B		C		D		
RNP 0.11 DA*	4220-1		356 (400-1)				NA		
RNP 0.17 DA	4258-1¼		394 (400-1¼)				NA		
RNP 0.30 DA	4353-1½		489 (500-1½)				NA		

## AUTHORIZATION REQUIRED

REIL Rwy 9, 17 and 35  
 MIRL Rwy 5-23 and 17-35  
 HIRL Rwy 9-27