

LOC I- <b>HLN</b>	APP CRS <b>087°</b>	Rwy ldg TDZE <b>N/A</b>	N/A
<b>110.1</b>		Apt Elev <b>3877</b>	<b>3877</b>

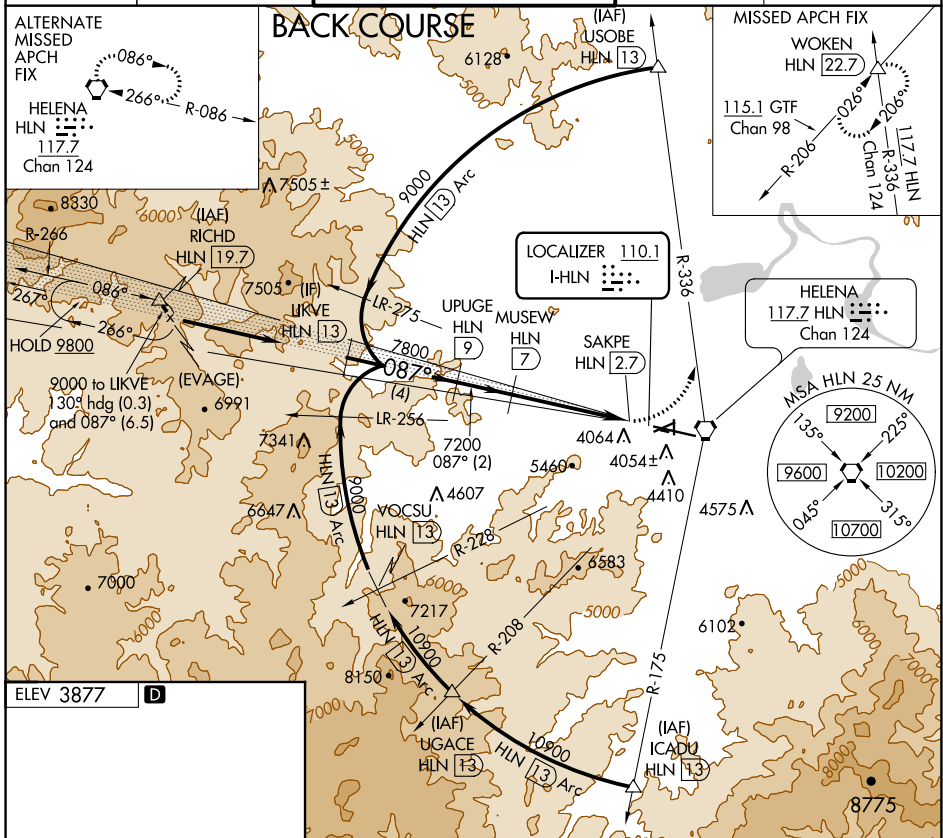
# LOC/DME BC-C

HELENA RGNL (HLN)

**⚠** Circling to Rwy 5, 35 NA at night. When local altimeter setting not received, procedure NA. Visibility reduction by helicopters NA. DME from HLN VORTAC simultaneous reception of I-**HLN** and HLN DME required. When VGSI inop, Circling to Rwy 9, 23 NA at night.

**MISSED APPROACH:** Climbing left turn to 9300 on HLN VORTAC R-336 to WOKEN INT and hold.

ATIS <b>120.4</b>	HELENA APP CON* <b>119.5 229.4</b>	HELENA TOWER* <b>118.3 (CTAF) 0 257.8</b>	GND CON <b>121.9</b>	UNICOM <b>122.95</b>
-------------------	------------------------------------	---	----------------------	----------------------



ELEV 3877 **D**

REIL Rws 9, 17 and 35 **⬇**  
 MIRL Rws 5-23 and 17-35 **⬇**  
 HIRL Rwy 9-27 **⬇**

CATEGORY	A	B	C	D
	5140-1¼ 1263 (1300-1¼)	5140-1½ 1263 (1300-1½)	5920-3 2043 (2100-3)	NA

**C** CIRCLING

NW-1, 16 JUL 2020 to 13 AUG 2020

NW-1, 16 JUL 2020 to 13 AUG 2020