

APP CRS <b>224°</b>	Rwy Idg <b>8000</b>
	TDZE <b>937</b>
	Apt Elev <b>955</b>

# RNAV (GPS) RWY 23

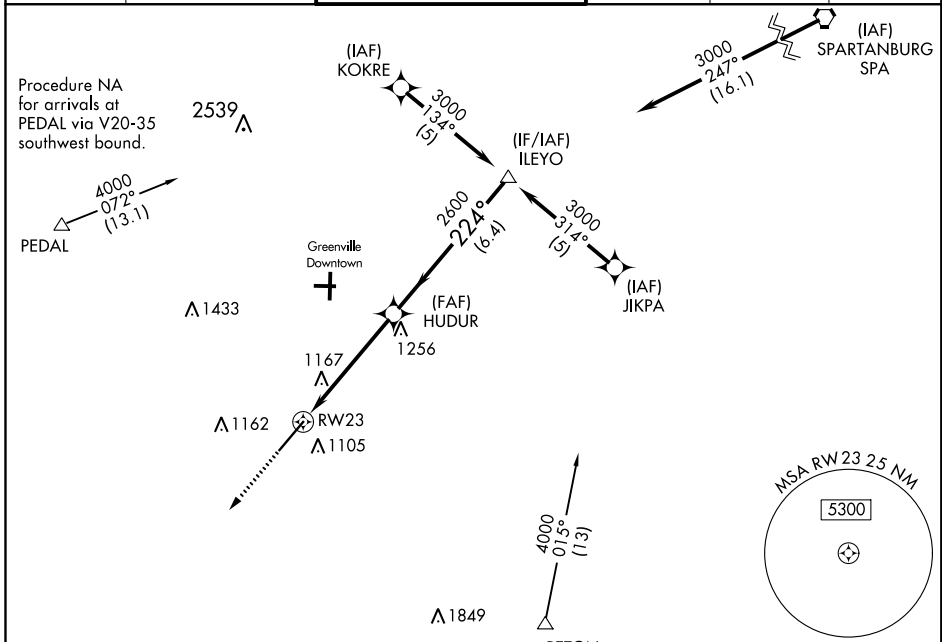
DONALDSON FIELD (GYH)

**▼** If local altimeter setting not received, use Greer altimeter setting and increase all MDA's 40 feet. VDP NA when using Greer altimeter setting. Helicopter visibility reduction below 3/4 statute mile NA. DME/DME RNP-0.3 NA.

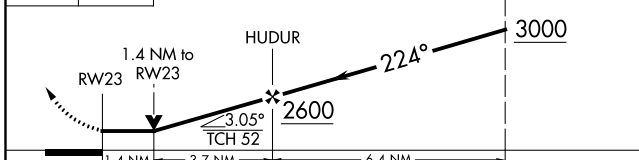
**▲** NA

**MISSED APPROACH:**  
Climb to 3000 direct NINYI and hold.

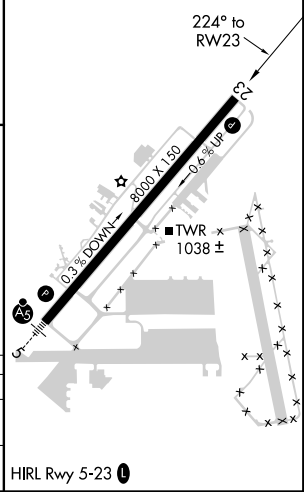
AWOS-3 <b>127.325</b>	GREER APP CON ★ <b>118.8 270.275</b>	DONALDSON TOWER ★ <b>133.325 (CTAF) 0 269.25</b>	GND CON <b>121.4</b>	CLNC DEL <b>121.4</b>	UNICOM <b>122.7</b>
--------------------------	---	---	-------------------------	--------------------------	------------------------



3000 NINYI VGSi and descent angles not coincident (VGSi Angle 4.14/TCH 95). Procedure Turn NA



ELEV 955	TDZE 937
----------	----------



CATEGORY	A	B	C	D
LNVA MDA	1420-1	483 (500-1)	1420-1 1/4 483 (500-1 1/4)	1420-1 1/2 483 (500-1 1/2)
CIRCLING	1420-1	465 (500-1)	1480-1 1/2 525 (600-1 1/2)	1520-2 565 (600-2)

HIRL Rwy 5-23

SE-2, 16 JUL 2020 to 13 AUG 2020

SE-2, 16 JUL 2020 to 13 AUG 2020