

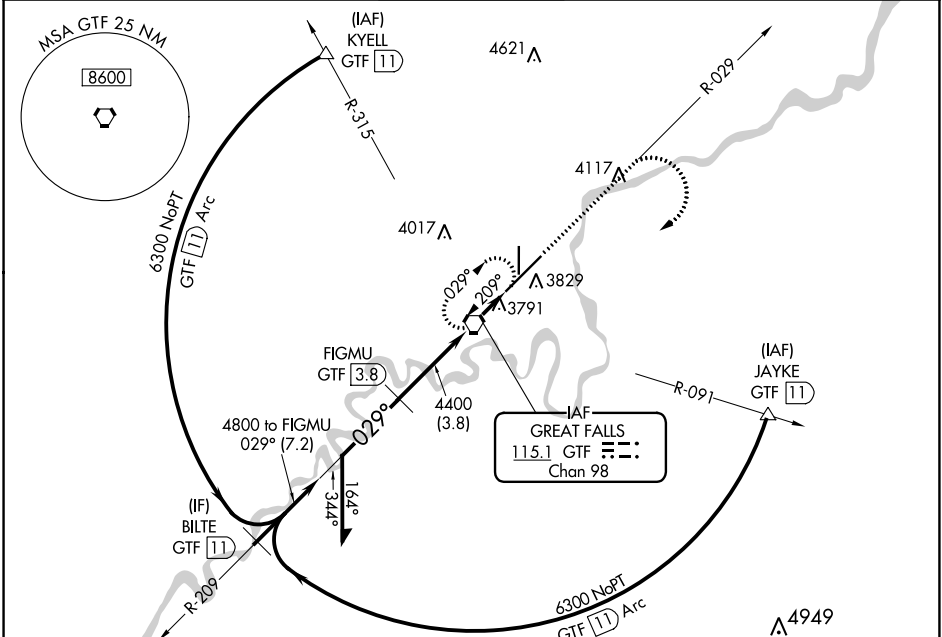
VORTAC GTF <b>115.1</b> Chan <b>98</b>	APP CRS <b>029°</b>	Rwy Idg <b>10502</b> TDZE <b>3680</b> Apt Elev <b>3680</b>
--	------------------------	--

# VOR/DME RWY 3

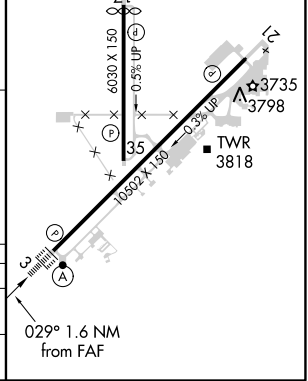
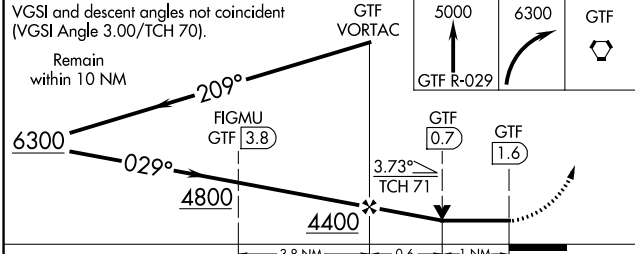
GREAT FALLS INTL (GTF)

<b>▽</b> -33°C For inoperative ALSF-2, increase S-3 Cat D visibility to RVR 6000.	ALSF-2 	MISSED APPROACH: Climb to 5000 via GTF VORTAC R-029 then climbing right turn to 6300 direct GTF VORTAC and hold, continue climb-in-hold to 6300.
--	------------	--

ATIS <b>126.6 269.0</b>	GREAT FALLS APP CON <b>128.6 379.175</b>	GREAT FALLS TOWER <b>118.7 282.2</b>	GND CON <b>121.7 348.6</b>	CLNC DEL <b>121.7 348.6</b>
----------------------------	---	---	-------------------------------	--------------------------------



ELEV 3680	<b>D</b> TDZE 3680
TDZ/CL Rwy 3	
REIL Rwy 21	
MIRL Rwy 17-35	
HIRL Rwy 3-21	



CATEGORY	A	B	C	D
S-3	4060/24 380 (400-½)			NA
<b>C</b> CIRCLING	4180-1	500 (500-1)	4320-1¾ 640 (700-1¾)	4420-2¼ 740 (800-2¼)

NW-1, 16 JUL 2020 to 13 AUG 2020

NW-1, 16 JUL 2020 to 13 AUG 2020