

WAAS CH <b>49240</b> W17A	APP CRS <b>167°</b>	Rwy Idg TDZE Apt Elev	<b>5800</b> <b>3660</b> <b>3680</b>
---------------------------------	------------------------	-----------------------------	---

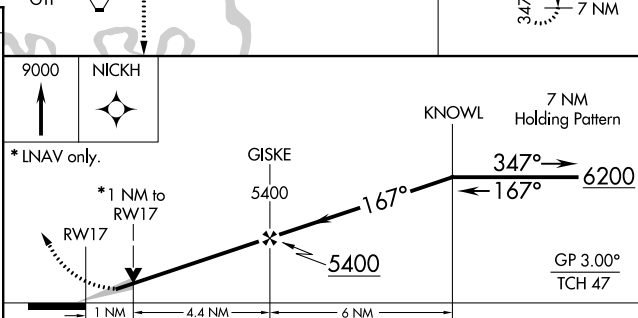
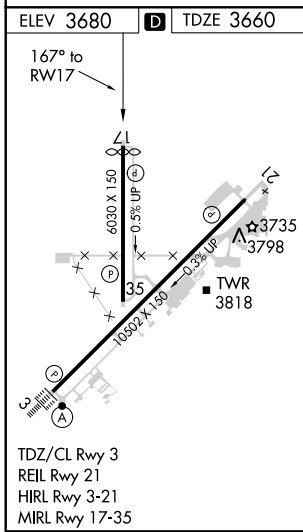
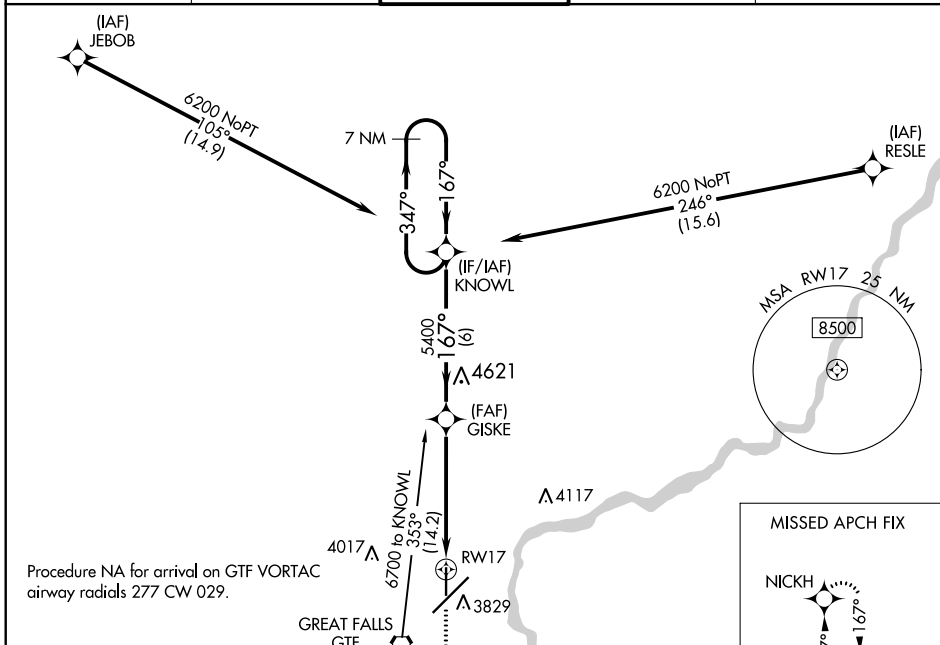
# RNAV (GPS) RWY 17

GREAT FALLS INTL (GTF)

**⚠** For uncompensated Baro-VNAV systems, LNAV/VNAV NA below -26°C (-1.4°F) or above 52°C (126°F).  
**⚠** -33°C DME/DME RNP -0.3 NA.

MISSED APPROACH: Climb to 9000 direct NICKH and hold, continue climb-in-hold to 9000.

ATIS <b>126.6 269.0</b>	GREAT FALLS APP CON <b>128.6 379.175</b>	GREAT FALLS TOWER <b>118.7 282.2</b>	GND CON <b>121.7 348.6</b>	CINC DEL <b>121.7 348.6</b>
----------------------------	---	---	-------------------------------	--------------------------------



CATEGORY	A	B	C	D
LPV DA		3910-7/8	250 (300-7/8)	
LNAV/VNAV DA		3910-7/8	250 (300-7/8)	
LNAV MDA		4000-1	340 (400-1)	
<b>C</b> CIRCLING	4120-1 440 (500-1)	4140-1 460 (500-1)	4320-1 3/4 640 (700-1 3/4)	4420-2 1/4 740 (800-2 1/4)

NW-1, 16 JUL 2020 to 13 AUG 2020

NW-1, 16 JUL 2020 to 13 AUG 2020