

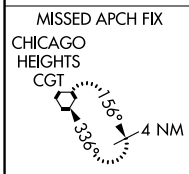
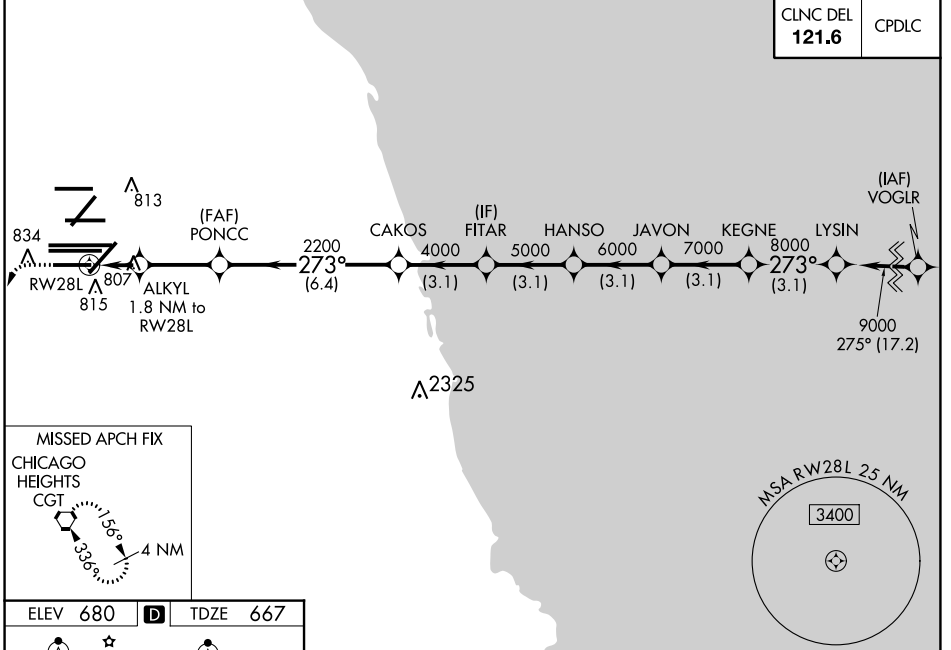
WAAS CH 65837 W28D	APP CRS 273°	Rwy Idg TDZE Apt Elev	7500 667 680
----------------------------------------	------------------------	-----------------------------	-----------------------------------------

RNAV (GPS) Z RWY 28L

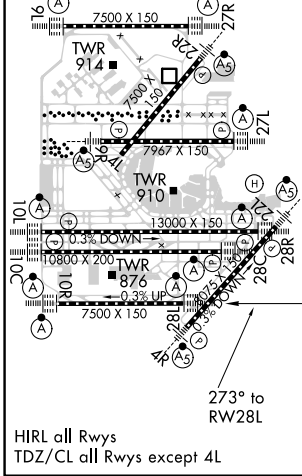
CHICAGO O'HARE INTL (ORD)

RNP APCH.		ALSF-2		MISSED APPROACH: Climb 1200 then climbing left turn to 4000 direct CGT VORTAC and hold.	
▼ Simultaneous approach authorized. LNAV procedure NA during simultaneous operations. For uncompensated Baro-VNAV systems, LNAV/VNAV NA below -19C or above 54C. Use of FD or AP required during simultaneous operations.		O'HARE TOWERS 128.15 348.0 (Rwy 9L/27R) 133.0 348.0 (10R/28L)		GND CON (TWR CENTER) 121.75 (OBND) (TWR NORTH) 121.9 (IBND) (TWR SOUTH) 121.9 (ALL TWRs) 226.675	
D-ATIS 135.4 282.225	CHICAGO APP CON 119.0 292.125				

CLNC DEL 121.6	CPDLC
--------------------------	-------



ELEV 680	D	TDZE 667
----------	----------	----------



1200	4000	CGT									
*LNAV only.			ALKYL 1.8 NM to RW28L	PONCC 2200	CAKOS	FITAR	HANSO	JAVON	KEGNE	LYSIN	
			*1.1 NM to RW28L							9000	
			RW28L							8000	
										GP 3.00°	
										TCH 55	
			1.1 NM	0.7	2.9 NM	6.4 NM	3.1 NM	3.1 NM	3.1 NM	3.1 NM	
CATEGORY		A		B		C		D			
LPV		DA		867/18		200 (200-1/2)					
LNAV/VNAV		DA		1090/40		423 (500-3/4)					
LNAV		MDA		1060/24		393 (400-1/2)		1060/35		393 (400-5/8)	

EC-3, 16 JUL 2020 to 13 AUG 2020

EC-3, 16 JUL 2020 to 13 AUG 2020