

WAAS CH 42634 W28B	APP CRS 273°	Rwy Idg 10800 TDZE 651 Apt Elev 680
--	------------------------	--

RNAV (GPS) RWY 28C

CHICAGO O'HARE INTL (ORD)

▼ DME/DME RNP-0.3 NA. Simultaneous approach authorized. For uncompensated Baro-VNAV systems, LNAV/VNAV NA below -19°C (-2°F) or above 54°C (130°F). LNAV procedure NA during simultaneous operations. Use of FD or AP providing RNAV track guidance required during simultaneous operations. For inop ALSF, increase LNAV Cat C and D visibility to RVR 6000.

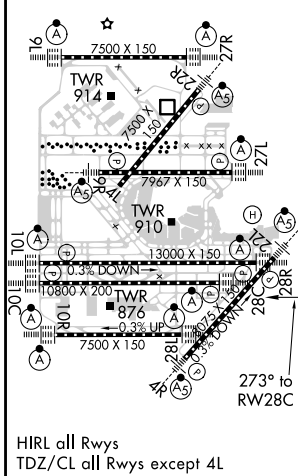
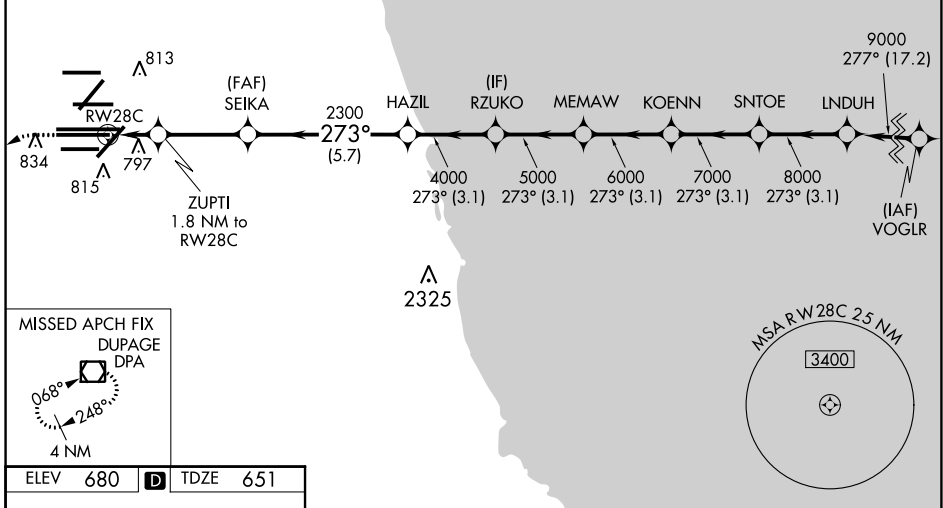


MISSED APPROACH:
Climb to 1100 then climbing left turn to 4000 direct DPA VOR/DME and hold.

D-ATIS 135.4 282.225	CHICAGO APP CON 119.0 292.125	O'HARE TOWERS 128.15 348.0 (Rwy 9L/27R) 133.0 348.0 (10R/28L) 120.75 121.15 126.9 132.7 348.0 (CENTER)				GND CON (TWR NORTH) 124.125 (TWR SOUTH) 118.05 (ALL TWRs) 226.675	(TWR CENTER) 121.75 (OBND) 121.9 (IBND)
--	---	--	--	--	--	---	---

CLNC DEL 121.6	CPDLC
--------------------------	-------

RADAR REQUIRED



ELEV 680	D	TDZE 651	
1100	4000	DPA	VGSI and RNAV glidepath not coincident (VGSI Angle 3.00/TCH 80).
*LNAV only.			
ZUPTI 1.8 NM to RW28C	SEIKA 2300	HAZIL	RZUKO MEMAW KOENN SNTOE LNDUH
*1 NM to RW28C	4000	5000	6000 7000 8000 9000
RW28C	*1260	2300	GP 3.00° TCH 55
←1 NM→	0.8	3.2 NM	→5.7 NM→ 3.1 NM 3.1 NM 3.1 NM 3.1 NM 3.1 NM
CATEGORY	A	B	C D
LPV DA		851/18	200 (200-½)
LNAV/VNAV DA		1094/50	443 (500-1)
LNAV MDA	1060/24	409 (400-½)	1060/40 409 (400-¾)

EC-3, 16 JUL 2020 to 13 AUG 2020

EC-3, 16 JUL 2020 to 13 AUG 2020