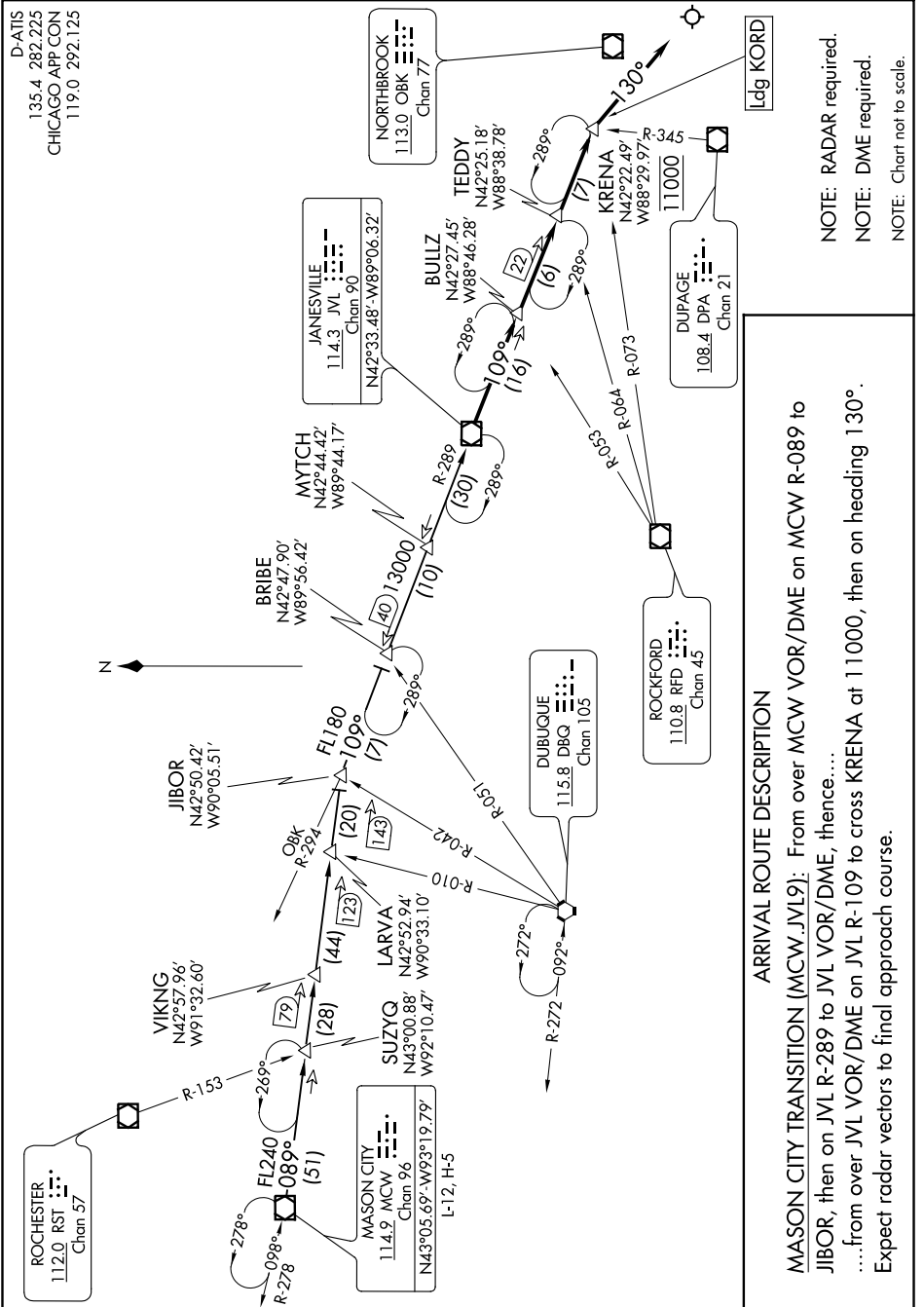


JANESVILLE NINE ARRIVAL

CHICAGO, ILLINOIS

D-ATIS
135.4 282.225
CHICAGO APP CON
119.0 292.125

EC-3, 16 JUL 2020 to 13 AUG 2020



NOTE: RADAR required.
 NOTE: DME required.
 NOTE: Chart not to scale.

ARRIVAL ROUTE DESCRIPTION

MASON CITY TRANSITION (MCW.JVL9): From over MCW VOR/DME on MCW R-089 to JIBOR, then on JVL R-289 to JVL VOR/DME, thence...
 ...from over JVL VOR/DME on JVL R-109 to cross KRENA at 11000, then on heading 130°. Expect radar vectors to final approach course.

EC-3, 16 JUL 2020 to 13 AUG 2020

JANESVILLE NINE ARRIVAL

(JVL.JVL9) 19JUL18

CHICAGO, ILLINOIS
CHICAGO O'HARE INTL (ORD)