

LOC/DME I-ZJ <b>110.75</b> Chan 44 (Y)	APP CRS <b>094°</b>	Rwy Idg 7500	TDZE 680	Apt Elev 680
--	------------------------	-----------------	-------------	-----------------

# ILS Z or LOC Z RWY 10R

CHICAGO O'HARE INTL (ORD)

RNAV 1-GPS or RADAR required for procedure entry. DME or RADAR required.

From GIBNS: RNAV-1 GPS required.

Simultaneous approach authorized.  
For inop ALS, increase S-LOC 10R Cat C and D visibility to RVR 6000.

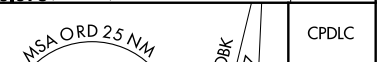
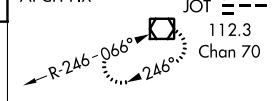


MISSED APPROACH: Climb to 1200 then climbing right turn to 4000 direct DPA VOR/DME and hold.

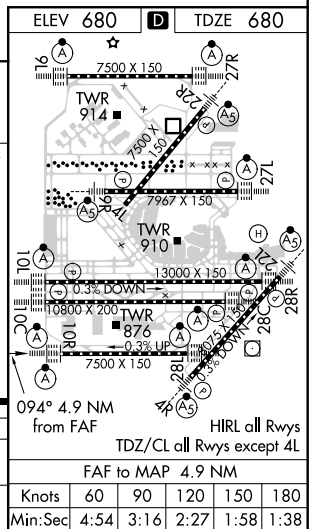
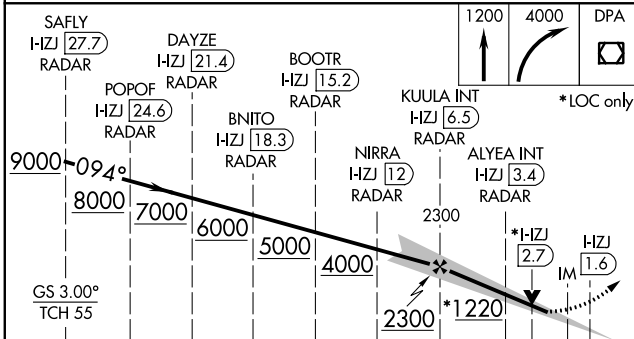
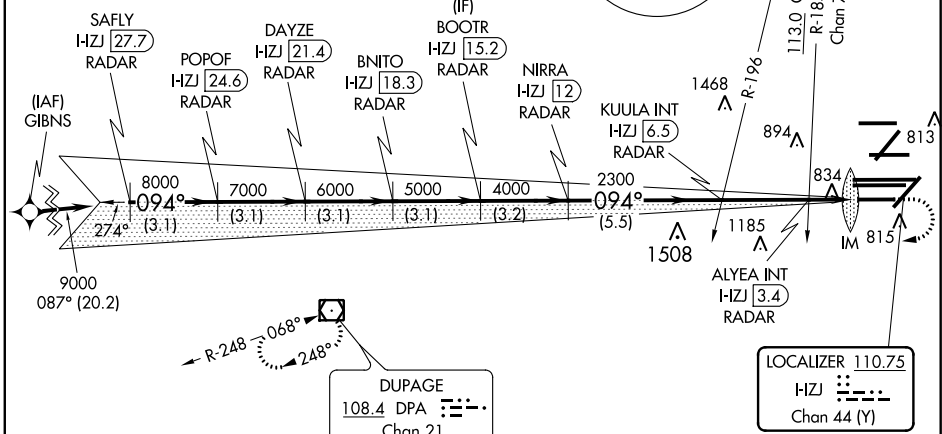
CHICAGO APP CON <b>119.0 292.125</b>	O'HARE TOWERS <b>128.15 348.0</b> (Rwy 9L/27R) <b>126.9 121.5 126.9 132.7 348.0</b> (CENTER)	GND CON (TWR NORTH) <b>124.125</b> (TWR SOUTH) <b>118.05</b> (ALL TWRs) <b>226.675</b>	(TWR CENTER) <b>121.75</b> (OBND) <b>121.9</b> (BND)	CLNC DEL <b>121.6</b>
---	--	---	--	--------------------------

D-ATIS  
**135.4**  
**282.225**

ALTERNATE MISSED APCH FIX



CPDLC



CATEGORY	A	B	C	D
S-ILS 10R	880/18		200 (200-½)	
S-LOC 10R	1100/24		420 (500-½)	

EC-3, 16 JUL 2020 to 13 AUG 2020

EC-3, 16 JUL 2020 to 13 AUG 2020