

ILS PRM RWY 28C (CAT II & III) (CLOSE PARALLEL) CHICAGO O'HARE INTL (ORD)

LOC/DME I-VZE 108.95 Chan 26 (Y)	APP CRS 273°	Rwy ldg 10800 TDZE 651 Apt Elev 680
------------------------------------------------------	------------------------	----------------------------------------------------------------

Aircraft not GPS equipped - RADAR required for procedure entry.
DME or RADAR required.
From VOGLR: RNAV 1-GPS required.

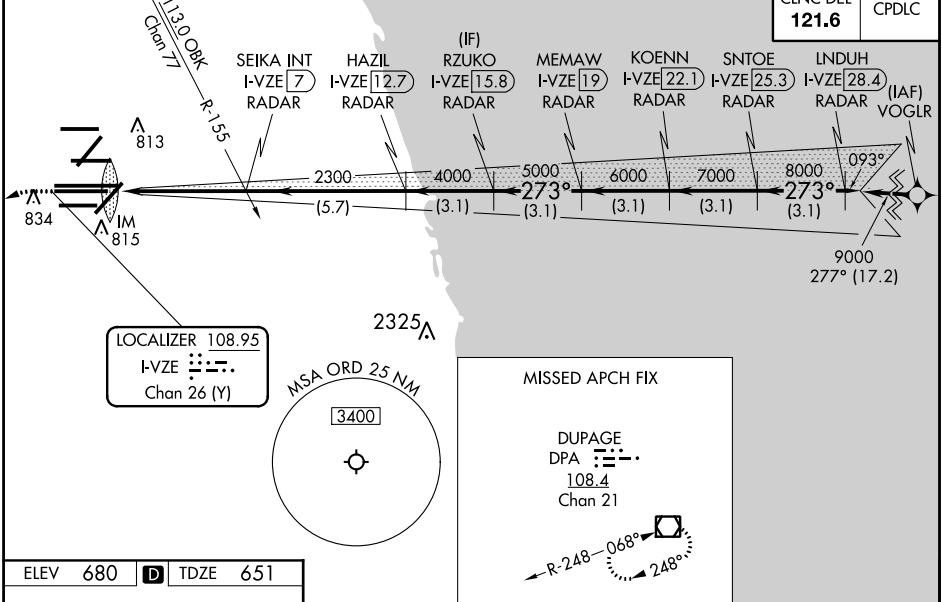
ALSF-2

MISSED APPROACH:
Climb to 1100 then climbing
left turn to 4000 on heading
215° and DPA VOR/DME
R-082 to DPA VOR/DME
and hold.

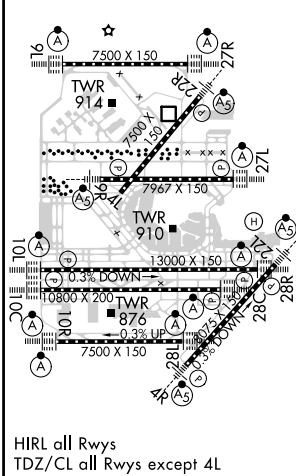
Simultaneous approach authorized. Use of FD or AP required during simultaneous operations. Dual VHF comm required. See additional requirements on AAUP.
CAT II: RVR 1000 authorized with specific OPSPEC, MSPEC, or LOA approval and use of autoland or HUD to touchdown.

D-ATIS 135.4 282.225	CHICAGO APP CON 119.0 292.125	O'HARE TOWERS 128.15 348.0 (Rwy 9L/27R) 133.0 348.0 (10R/28L) 120.75 121.15 126.9 132.7 348.0 (CENTER) PRM 119.625	GND CON (TWR CENTER) 124.125 (TWR NORTH) 121.75 (OBND) 118.05 (TWR SOUTH) 121.9 (IBND) 226.675 (ALL TWRS)
------------------------------------------	------------------------------------------------	---------------------------------------------------------------------------------------------------------------------------------------------------------------------------------------------------	-------------------------------------------------------------------------------------------------------------------------------------------------------

CLNC DEL 121.6	CPDLC
--------------------------	-------



ELEV 680	D	TDZE 651
-----------------	----------	-----------------



1100 hdg 215°	DPA R-082 <input checked="" type="checkbox"/>	VGSI and ILS glidepath not coincident (VGSI Angle 3.00/TCH 80).	LINDUH I-VZE 28.4
			RZUKO I-VZE 15.8
			KOENN I-VZE 22.1
			SNTOE I-VZE 25.3
			SEIKA INT I-VZE 7
			HAZIL I-VZE 12.7
			MEMAW I-VZE 19
			2300
			4000
			5000
			6000
			7000
			8000
			9000
			GS 3.00° TCH 55
			1044'
			5 NM
			5.7 NM
			3.1 NM
			3.1 NM
			3.1 NM
			3.1 NM
			3.1 NM

CATEGORY	A	B	C	D
S-ILS 28C	CAT II RA 105/12 100 DA 751			
S-ILS 28C	CAT III RVR 06			

CATEGORY II & III ILS - SPECIAL AIRCREW & AIRCRAFT CERTIFICATION REQUIRED

EC-3, 16 JUL 2020 to 13 AUG 2020

EC-3, 16 JUL 2020 to 13 AUG 2020