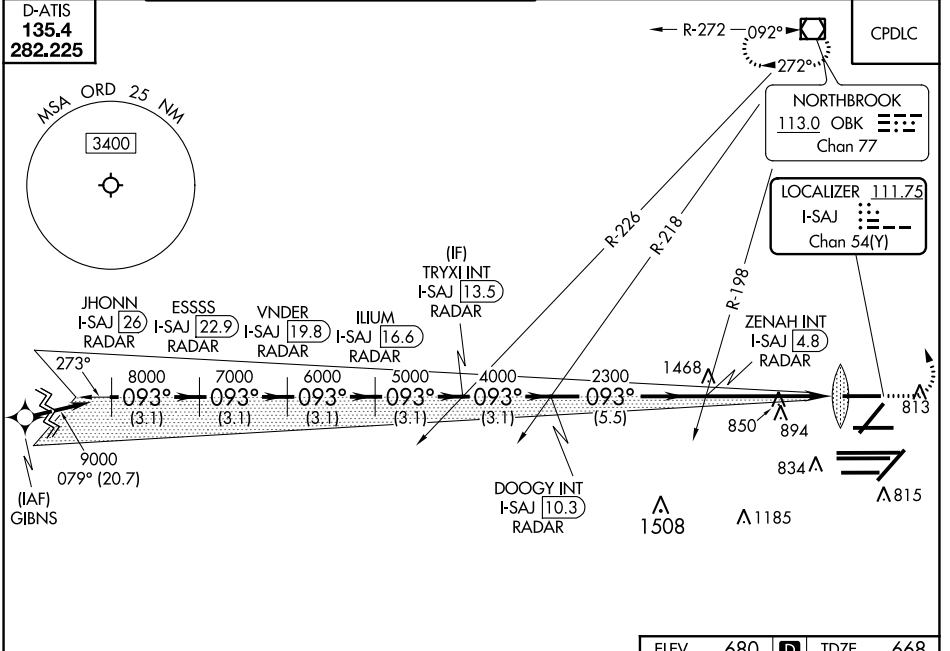


LOC/DME I-SAJ 111.75 Chan 54 (Y)	APP CRS 093°	Rwy Idg 7500 TDZE 668 Apt Elev 680
--	------------------------	---

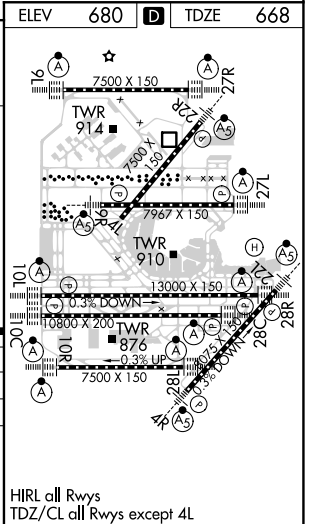
ILS RWY 9L (CAT II & III)

CHICAGO O'HARE INTL (ORD)

RNAV-1 GPS or RADAR required for procedure entry. RADAR or DME required.		ALSF-2 	MISSED APPROACH: Climb to 1100 then climbing left turn to 4000 direct OBK VOR/DME and hold, continue climb-in-hold to 4000.
Simultaneous approach authorized.			
CHICAGO APP CON 119.0 292.125	O'HARE TOWERS 128.15 348.0 (Rwy 9L/27R) 133.0 348.0 (10R/28L) 120.75 121.15 126.9 132.7 348.0 (CENTER)	GND CON (TWR NORTH) 124.125 (TWR SOUTH) 118.05 (ALL TWRs) 226.675	(TWR CENTER) 121.75 (OBND) 121.9 (IBND)
D-ATIS 135.4 282.225			CLNC DEL 121.6



JHONN I-SAJ 26 RADAR	ESSSS I-SAJ 22.9 RADAR	VNDER I-SAJ 19.8 RADAR	ILIUM I-SAJ 16.6 RADAR	DOOGY INT I-SAJ 10.3 RADAR	ZENAH INT I-SAJ 4.8 RADAR	TRYXI INT I-SAJ 13.5 RADAR	I-SAJ DME ANTENNA
9000	8000	7000	6000	5000	4000	2300	IM 768
3.1 NM	3.1 NM	3.1 NM	3.1 NM	3.1 NM	5.5 NM	5 NM	1160'
GS 3.00° TCH 55							
CATEGORY	A	B	C	D			
S-ILS 9L	CAT II RA 104/12 100 DA 768						
S-ILS 9L	CAT III RVR 06						
CATEGORY II & III ILS - SPECIAL AIRCREW & AIRCRAFT CERTIFICATION REQUIRED							



EC-3, 16 JUL 2020 to 13 AUG 2020

EC-3, 16 JUL 2020 to 13 AUG 2020

HIRL all Rwys
TDZ/CL all Rwys except 4L