

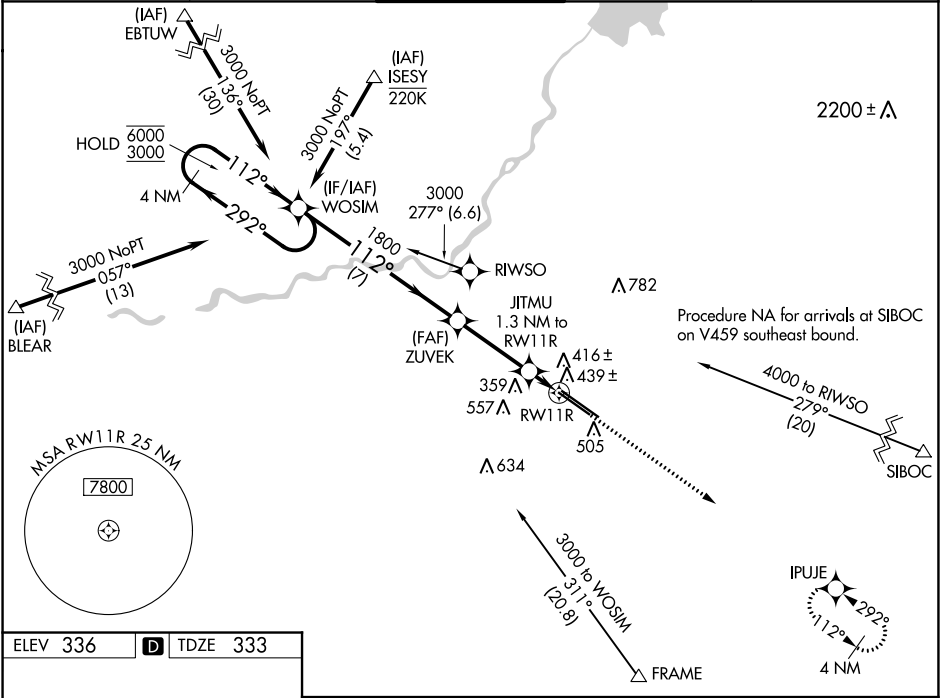
WAAS CH <b>78330</b> <b>W11B</b>	APP CRS <b>112°</b>	Rwy Idg TDZE <b>333</b> Apt Elev <b>336</b>	<b>8008</b>
--	------------------------	---	-------------

# RNAV (GPS) RWY 11R

FRESNO YOSEMITE INTL (FAT)

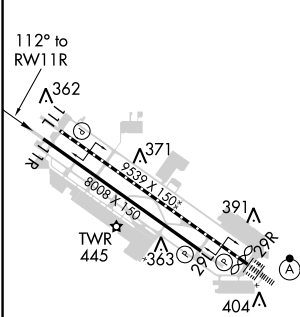
RNP APCH.   
 ▼ Rwy 11R helicopter reduction below 3/4 SM NA. For uncompensated Baro-VNAV systems, LNAV/VNAV NA below -1°C or above 54°C.   
 MISSED APPROACH: Climb to 2600 direct IPUJE and hold.

ATIS <b>121.35 273.6</b>	FRESNO APP CON <b>119.6 351.95</b>	FRESNO TOWER <b>118.2 251.1</b>	GND CON <b>121.7 348.6</b>	CLNC DEL <b>124.35 348.6</b>
-----------------------------	---------------------------------------	------------------------------------	-------------------------------	---------------------------------

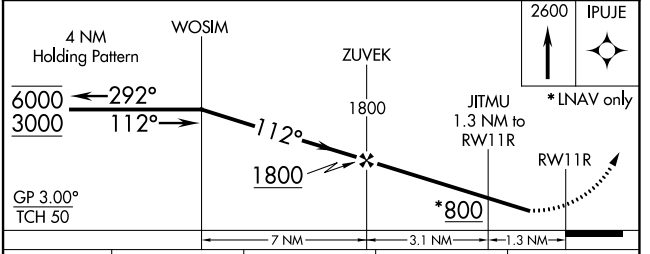


SW-2, 16 JUL 2020 to 13 AUG 2020

SW-2, 16 JUL 2020 to 13 AUG 2020



ELEV 336	<b>D</b>	TDZE 333
----------	----------	----------



CATEGORY	A	B	C	D
LPV DA	584-3/4 251 (300-3/4)			
LNAV/VNAV DA	620-7/8 287 (300-7/8)			
LNAV MDA	700-1 367 (400-1)			
<b>C</b> CIRCLING	820-1 484 (500-1)	920-1 1/2 584 (600-1 1/2)		920-2 584 (600-2)