

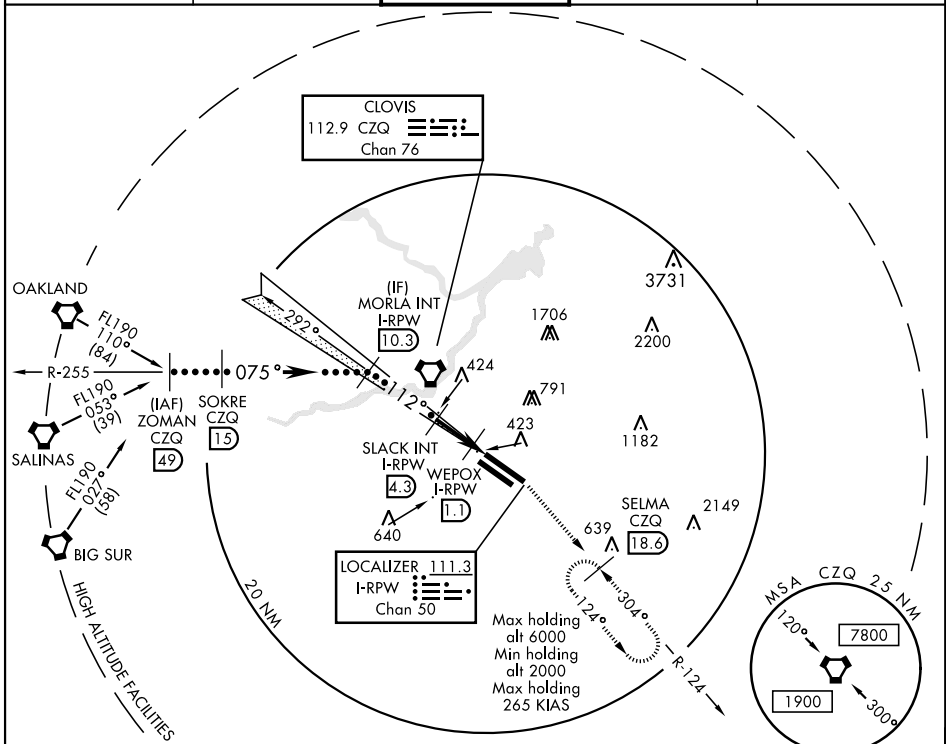
# HI-LOC Z RWY 11L

LOC/DME I-RPW <b>111.3</b> Chan <b>50</b>	APCH CRS <b>112°</b>	Rwy Idg 11L <b>9539</b> 11R <b>8008</b> TDZE 11L <b>336</b> 11R <b>333</b> Arprt Elev <b>336</b>
---	-------------------------	---

JAL-162 [USAF] FRESNO YOSEMITE INTL (KFAT)

MISSED APPROACH: Climb to 2000 on heading 112° and CZQ VORTAC R-124 to SELMA 18.6 DME and hold.

ATIS <b>121.35 273.6</b>	FRESNO APP CON <b>119.6 351.95</b>	FRESNO TOWER <b>118.2 251.1</b>	GND CON <b>121.7 348.6</b>	CLNC DEL <b>124.35 348.6</b>
-----------------------------	---------------------------------------	------------------------------------	-------------------------------	---------------------------------



SW-2, 16 JUL 2020 to 13 AUG 2020

SW-2, 16 JUL 2020 to 13 AUG 2020

## DME REQUIRED

EMERG SAFE ALT 100 NM 16,700

ZOMAN CZQ R-255 FL190	SOKRE CZQ 15	MORLA INT I-RPW 10.3	SLACK INT I-RPW 4.3	WEPOX I-RPW 1.1	I-RPW 0.2	2000	SELMA CZQ R-124 18.6	ELEV 336	TDZE 11L 336 TDZE 11R 333
						112° 4.5 NM from FAF Rwy 29R Idg 9227'			
CATEGORY	C	D	E						
S-LOC 11L	680/55	344	(400-1¼)						
SIDE STEP RWY 11R	680-1½ 347 (400-1½)	680-2	347	(400-2)					
CIRCLING	920-1½ 584 (600-1½)	920-2 584 (600-2)	804	1140-2¾ (900-2¾)					

# HI-LOC Z RWY 11L