

APP CRS	Rwy Idg	3089
291°	TDZE	280
	Apt Elev	280

RNAV (GPS) RWY 30

FRESNO CHANDLER EXECUTIVE (FCH)

RNP APCH

▼ Straight-in Rwy 30 NA at night, Circling Rwy 30 NA at night.
Rwy 30 helicopter visibility reduction below 1 SM NA.

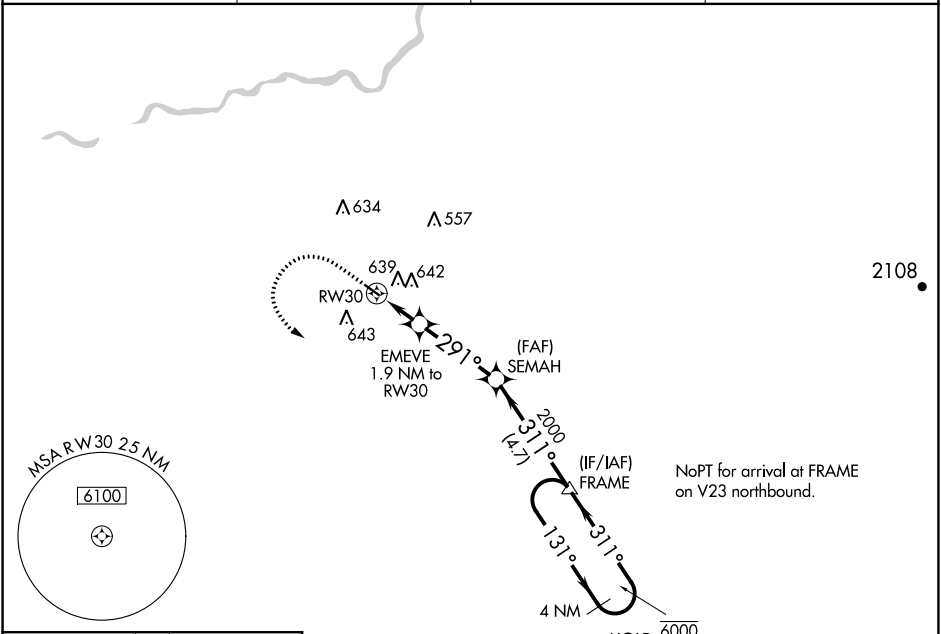
MISSED APPROACH: Climb to 1000 then climbing left turn to 2000 direct FRAME and hold.

AWOS-3
135.225

FRESNO APP CON
119.0 323.25

CLNC DEL
119.0

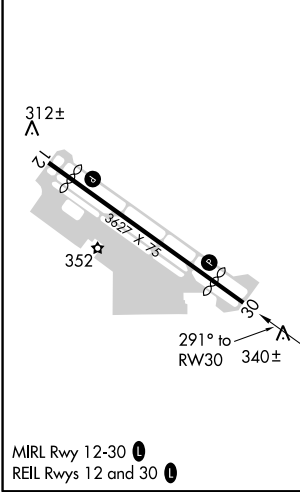
UNICOM
123.0 (CTAF) 0



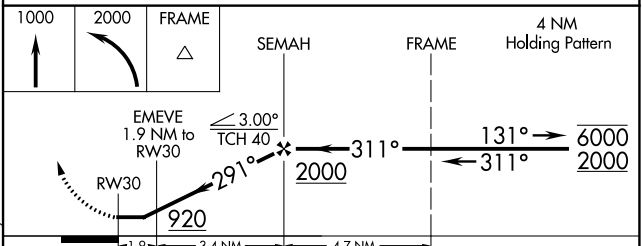
SW-2, 16 JUL 2020 to 13 AUG 2020

SW-2, 16 JUL 2020 to 13 AUG 2020

ELEV 280	TDZE 280
-----------------	-----------------



MIRL Rwy 12-30 0
REIL Rwy 12 and 30 0



CATEGORY	A	B	C	D
LNAV MDA	800-1	520 (600-1)	800-1 3/8 520 (600-1 3/8)	NA
C CIRCLING	960-1	680 (700-1)	960-2 680 (700-2)	NA