

WAAS CH 49242	APP CRS 111°	Rwy Idg TDZE Apt Elev	3212 280 280
W12A			

RNAV (GPS) RWY 12

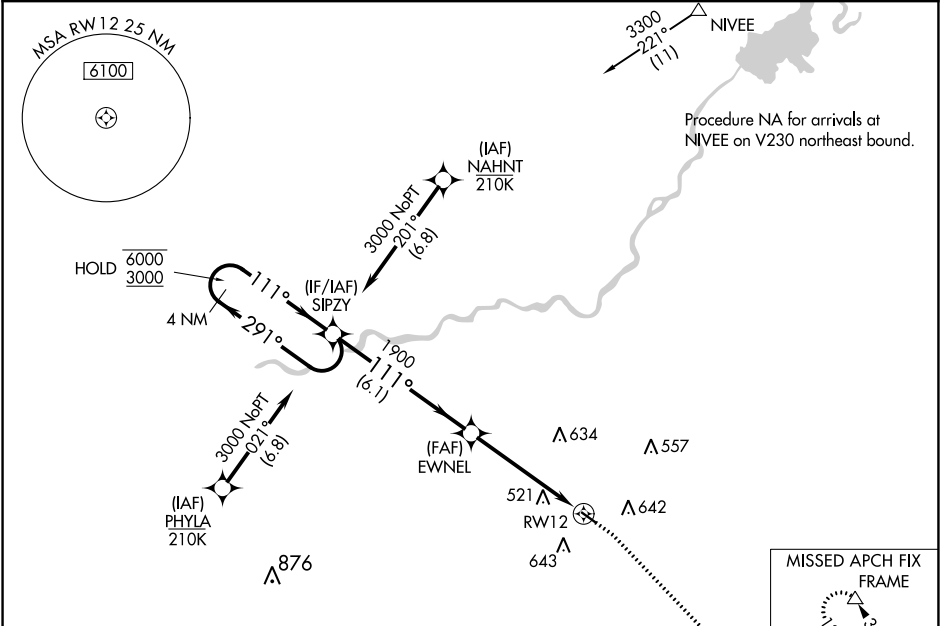
FRESNO CHANDLER EXECUTIVE (FCH)

RNP APCH.

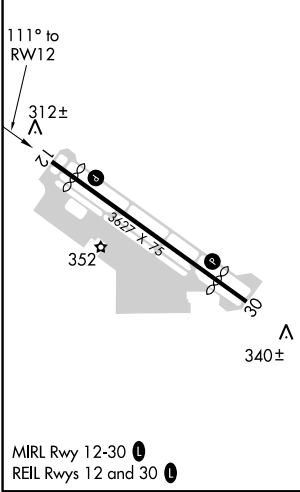
▼ For uncompensated Baro-VNAV systems, LNAV/VNAV NA below -1° C or above 54°C.
 ▲ Rwy 12 helicopter visibility reduction below 3/4 SM NA.
 Circling Rwy 30 NA at night.

MISSED APPROACH: Climb to 800 then climbing right turn to 2000 direct FRAME and hold.

AWOS-3 135.225	FRESNO APP CON 119.0 323.25	CLNC DEL 119.0	UNICOM 123.0 (CTAF) 0
--------------------------	---------------------------------------	--------------------------	---------------------------------



ELEV 280	TDZE 280
----------	----------



4 NM Holding Pattern	800	2000	FRAME	
SIPZY	EWNEL	1900	*LNAV only	
6000 ← 291°	3000 → 111°	1900	*1.4 NM to RWY12	
GP 3.00°	TCH 40	1900	RWY12	
6.1 NM		3.6 NM	1.4 NM	
LPV DA	530-3/4	250 (300-3/4)	NA	
LNAV/VNAV DA	809-1 1/2	529 (600-1 1/2)	NA	
LNAV MDA	780-1	500 (500-1)	780-1 3/8 500 (500-1 3/8)	NA
C CIRCLING	960-1	680 (700-1)	960-2 680 (700-2)	NA

SW-2, 16 JUL 2020 to 13 AUG 2020

SW-2, 16 JUL 2020 to 13 AUG 2020