

APP CRS	Rwy Idg	6095
034°	TDZE	4186
	Apt Elev	4187

RNAV (GPS) RWY 3

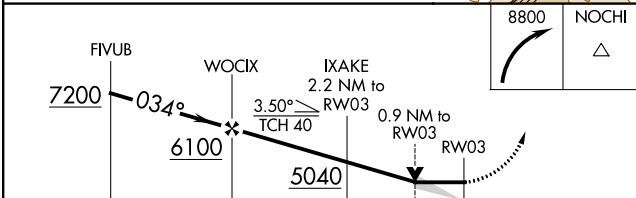
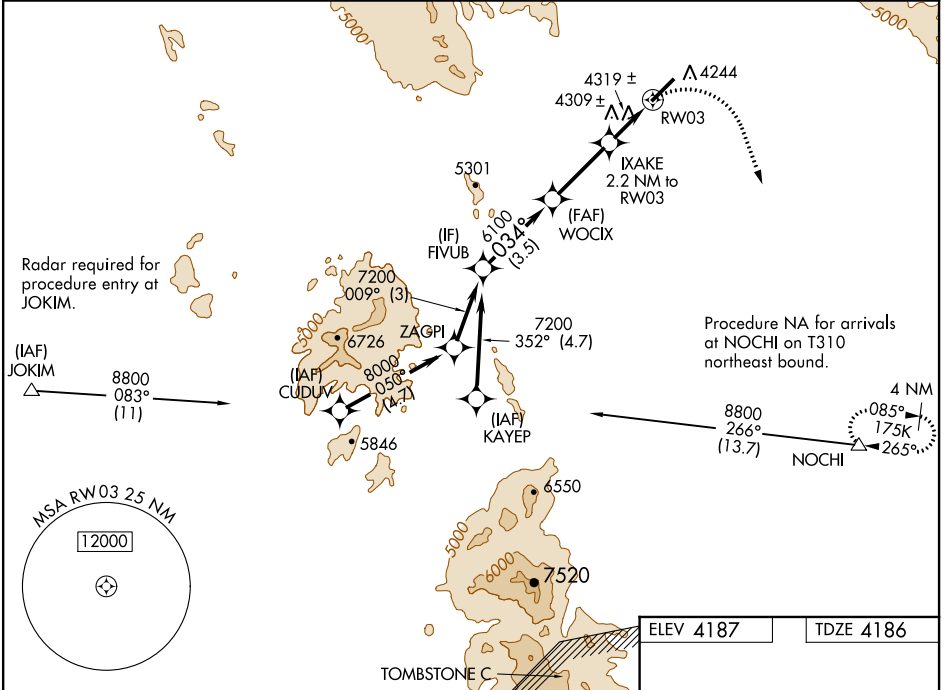
COCHISE COUNTY (P33)

▽ Obtain local altimeter setting on CTAF; when not received, use Douglas Bisbee altimeter setting. DME/DME RNP-0.3 NA. VDP NA with Douglas Bisbee altimeter setting.

▲ NA MISSED APPROACH: Climbing right turn to 8800 direct NOCHI and hold, continue climb-in-hold to 8800.

ALBUQUERQUE CENTER **134.45 327.15**

UNICOM **122.8 (CTAF) 0**



ELEV 4187	TDZE 4186
-----------	-----------

4237 ±

6095 X75

034° to RW03

MRL Rwy 3-21 0

CATEGORY	A	B	C	D
RNAV MDA	4560-1	374 (400-1)		NA
CIRCLING	4600-1 413 (500-1)	4640-1 453 (500-1)		NA
DOUGLAS BISBEE ALTIMETER SETTING MINIMUMS				
RNAV MDA	4680-1	494 (500-1)		NA
CIRCLING	4720-1	533 (600-1)		NA

SW-4, 16 JUL 2020 to 13 AUG 2020

SW-4, 16 JUL 2020 to 13 AUG 2020