

WAAS CH 72927 W36A	APP CRS 359°	Rwy Idg TDZE Apt Elev	5000 59 61
--	------------------------	-----------------------------	---------------------------------------

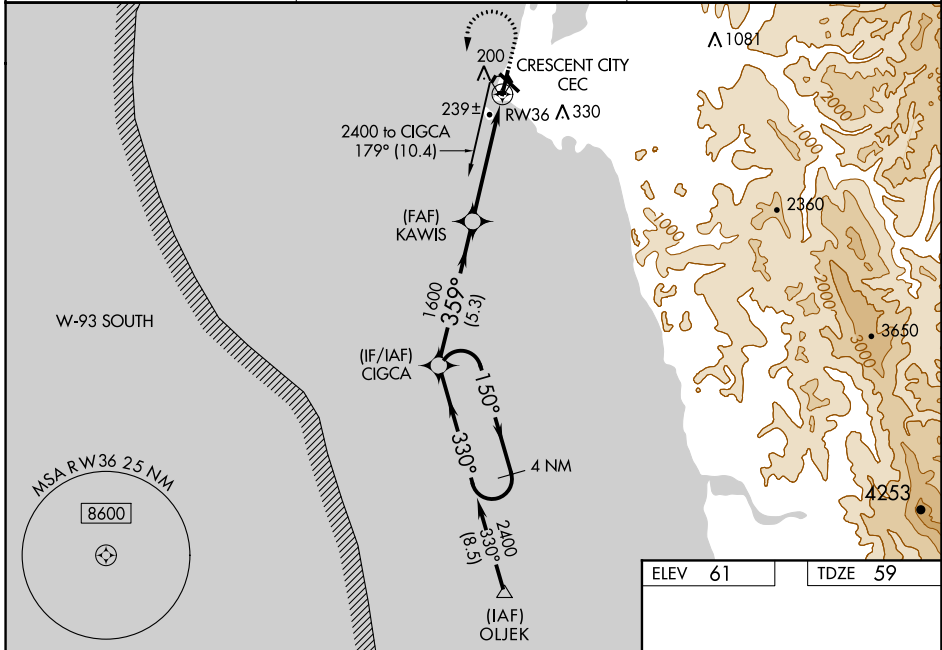
RNAV (GPS) RWY 36

JACK MC NAMARA FIELD (CEC)

⚠ Baro-VNAV NA when using Brookings altimeter setting. For uncompensated Baro-VNAV systems, LNAV/VNAV NA below -15°C (5°F) or above 54°C (130°F). DME/DME RNP-0.3 NA. When local altimeter setting not received, use Brookings altimeter setting and increase LPV DA to 406 feet and LNAV/VNAV DA to 505 feet and all MDA 100 feet; increase LPV all Cats and LNAV Cat C/D and Circling Cat D visibilities ¼ mile, increase LNAV/VNAV all Cats visibility ⅓ mile, and Circling Cat C visibility ½ mile. Helicopter visibility reduction below 1 SM NA. Night landing: Rwy 36 operational VGSI required, remain on or above VGSI glidepath until threshold. Night landing: Rwy 18, 30 NA at night.

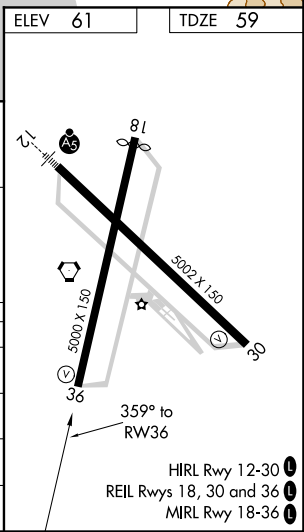
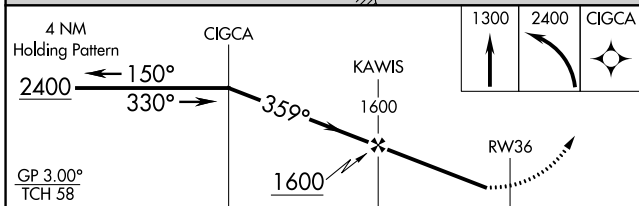
⚠ MISSED APPROACH: Climb to 1300 then climbing left turn to 2400 direct CIGCA and hold.

ASOS 119.925	SEATTLE CENTER 124.85 306.3	UNICOM 122.8 (CTAF) 0
------------------------	---------------------------------------	---------------------------------



SW-2, 16 JUL 2020 to 13 AUG 2020

SW-2, 16 JUL 2020 to 13 AUG 2020



CATEGORY	A	B	C	D
LPV DA	309-1		250 (300-1)	
LNAV/VNAV DA	408-1½		349 (400-1½)	
LNAV MDA	500-1	441 (500-1)	500-1¾	441 (500-1¾)
C CIRCLING	540-1	479 (500-1)	640-1½ 579 (600-1½)	640-2 579 (600-2)

HIRL Rwy 12-30 **0**
REIL Rws 18, 30 and 36 **0**
MIRL Rwy 18-36 **0**