

WAAS CH 90310 W12A	APP CRS 119°	Rwy Idg TDZE Apt Elev	5002 60 61
--	------------------------	-----------------------------	---------------------------------------

RNAV (GPS) RWY 12

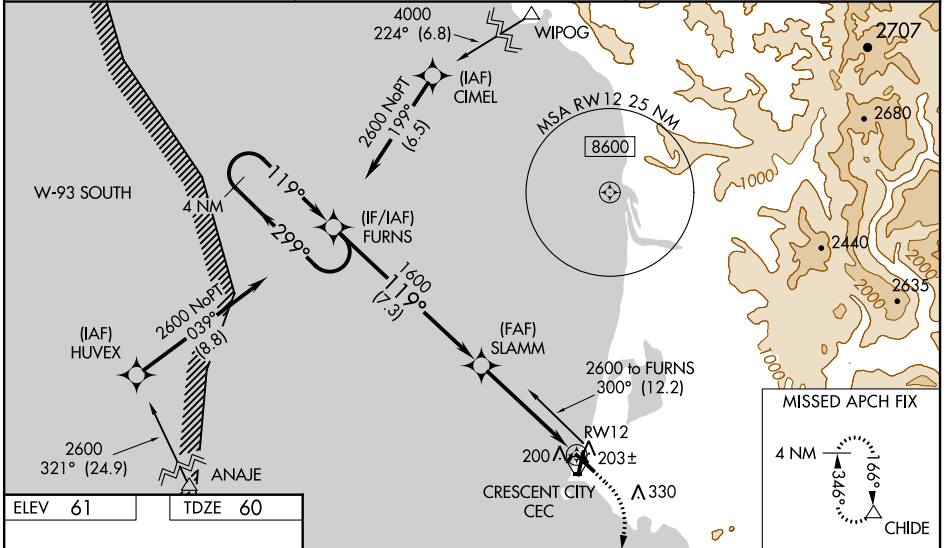
JACK MC NAMARA FIELD (CEC)

▽ Inop table does not apply to LPV all Cats. For uncompensated Baro-VNAV systems, LNAV/VNAV NA below 0°C (32°F) or above 54°C (130°F). DME/DME RNP-0.3 NA. When local altimeter setting not received, use Brookings altimeter setting and increase LPV DA to 407 feet, LNAV/VNAV DA to 484 feet and all MDA 100 feet; increase LPV all Cats visibility to ½ mile, LNAV/VNAV all Cats visibility to 1½ mile, LNAV Cat C/D to 1½ mile, and Circling Cat C to 2 miles, Cat D to 2½ miles. For inop MALS, increase LNAV/VNAV all Cats visibility to 1 mile and LNAV Cat A/B visibility to 1 mile, Cat C/D to 1½ mile. For inop MALS, when using Brookings altimeter setting, increase LPV all Cats visibility to 1½ mile, LNAV/VNAV all Cats visibility to 1¾ mile, and LNAV Cat A/B to 1 mile, Cat C/D to 1¾ mile. VDP and Baro-VNAV NA when using Brookings altimeter setting. Night landing: Rwy 18, 30 NA. Night landing: Rwy 36, operational VGSI required, remain on or above VGSI glidepath until threshold.

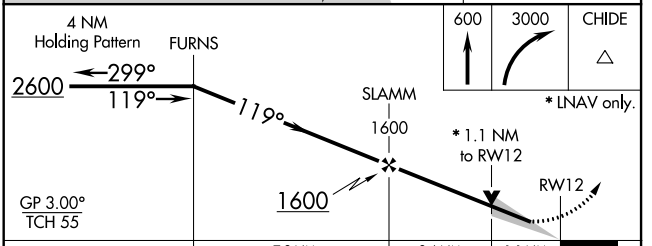
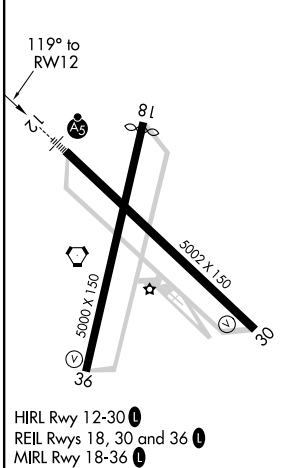
MALS

MISSED APPROACH:
Climb to 600 then climbing right turn to 3000 direct CHIDE and hold, continue climb-in-hold to 3000.

ASOS 119,925	SEATTLE CENTER 124.85 306.3	UNICOM 122.8 (CTAF) 0
------------------------	---------------------------------------	---------------------------------



ELEV 61	TDZE 60
---------	---------



CATEGORY	A	B	C	D
LPV DA		310-¾	250 (300-¾)	
LNAV/VNAV DA		387-¾	327 (400-¾)	
LNAV MDA	460-¾	400 (400-¾)	460-⅞	400 (400-⅞)
C CIRCLING	540-1	479 (500-1)	640-1½ 579 (600-1½)	640-2 579 (600-2)

SW-2, 16 JUL 2020 to 13 AUG 2020

SW-2, 16 JUL 2020 to 13 AUG 2020