

(RDBUD4.RDBUD) 20030

AL-27 (FAA)

AUGUSTA RGNL AT BUSH FIELD (AGS)
AUGUSTA, GEORGIA

RDBUD FOUR DEPARTURE (RNAV)

AUGUSTA TOWER ★
118.7 (CTAF) 239.3
AUGUSTA DEP CON ★
126.8 270.3
CLNC DEL
118.2

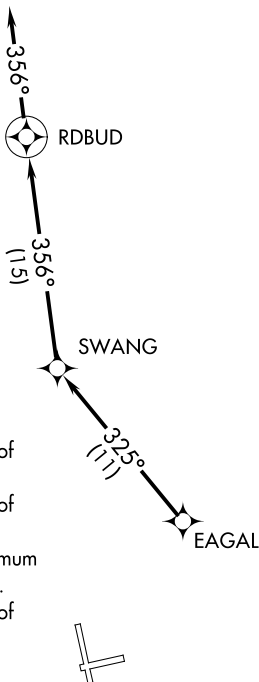
**TOP ALTITUDE:
ASSIGNED BY ATC**

TAKEOFF MINIMUMS

- Rwy 8: Standard with minimum climb of 394' per NM to 2500.
- Rwy 17: Standard with minimum climb of 265' per NM to 2400.
- Rwy 26: 300-1¾ or standard with minimum climb of 312' per NM to 2000.
- Rwy 35: Standard with minimum climb of 302' per NM to 2500.

- NOTE: DME/DME/IRU or GPS required.
- NOTE: RADAR required.
- NOTE: RNAV 1.
- NOTE: For Prop aircraft only during Masters Golf Tournament week.
- NOTE: Do not exceed 250K until advised by ATC.

NOTE: Chart not to scale.



SE-4, 16 JUL 2020 to 13 AUG 2020

SE-4, 16 JUL 2020 to 13 AUG 2020



DEPARTURE ROUTE DESCRIPTION

TAKEOFF RWYS 8, 17, 26, 35: Climb heading assigned by ATC for vectors to EAGAL. Then on depicted route to RDBUD, then on heading 356° for RADAR vectors, thence....

.... maintain altitude assigned by ATC. Expect clearance to filed altitude/flight level within 10 minutes after departure.

RDBUD FOUR DEPARTURE (RNAV)
(RDBUD4.RDBUD) 28FEB19

AUGUSTA, GEORGIA
AUGUSTA RGNL AT BUSH FIELD (AGS)