

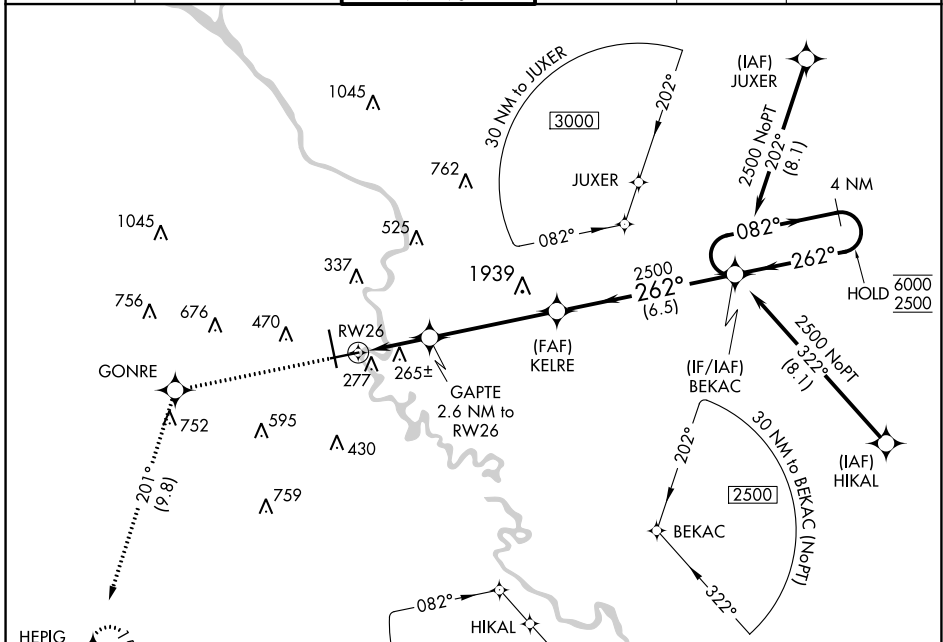
APP CRS	Rwy Idg	<b>6002</b>
<b>262°</b>	TDZE	<b>139</b>
	Apt Elev	<b>146</b>

# RNAV (GPS) RWY 26

AUGUSTA RGNL AT BUSH FIELD (AGS)

RNP APCH.					MISSED APPROACH: Climb to 3000 direct GONRE and on track 201° to HEPIG and hold.	
<p>▼ Rwy 26 helicopter visibility reduction below 3/4 SM NA. VDP NA with Daniel Field altimeter setting. ▲ When local altimeter setting not received, use Daniel Field altimeter setting and increase all MDA 60 feet; increase LNAV and Circling Cats C/D visibility 1/4 mile.</p>						

ATIS	AUGUSTA APP CON *	AUGUSTA TOWER *	GND CON	CLNC DEL	UNICOM
<b>132.75</b>	<b>126.8 270.3</b>	<b>118.7 (CTAF) 0 239.3</b>	<b>121.9 348.6</b>	<b>118.65</b>	<b>122.95</b>



SE-4, 16 JUL 2020 to 13 AUG 2020

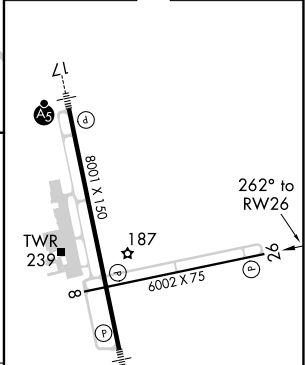
SE-4, 16 JUL 2020 to 13 AUG 2020

ELEV	146	TDZE	139
------	-----	------	-----



3000	GONRE	HEPIG	VGSI and descent angles not coincident (VGSI Angle 3.00/TCH 64).	
↑	tr 201°	◆	4 NM Holding Pattern	
<p>1 NM to RWY 26</p> <p>2.6 NM to RWY 26</p> <p>1020</p> <p>2500</p> <p>6000</p> <p>2500</p>			<p>262°</p> <p>082°</p> <p>262°</p>	
<p>1 NM</p> <p>1.6 NM</p> <p>4.7 NM</p> <p>6.5 NM</p>				

ELEV	146	TDZE	139
------	-----	------	-----



CATEGORY	A	B	C	D
LNAV MDA	520-1 381 (400-1)		520-1 3/8 381 (400-1 1/8)	
CIRCLING	780-1 634 (700-1)		780-1 3/4 634 (700-1 3/4)	900-2 1/2 754 (800-2 1/2)

MIRL Rwy 8-26  
HIRL Rwy 17-35  
REIL Rws 8 and 26