

ILS or LOC RWY 17

AUGUSTA RGNL AT BUSH FIELD (AGS)

LOC I-MZX 111.75	APP CRS 172°	Rwy Idg 8001
		TDZE 146
		Apt Elev 146

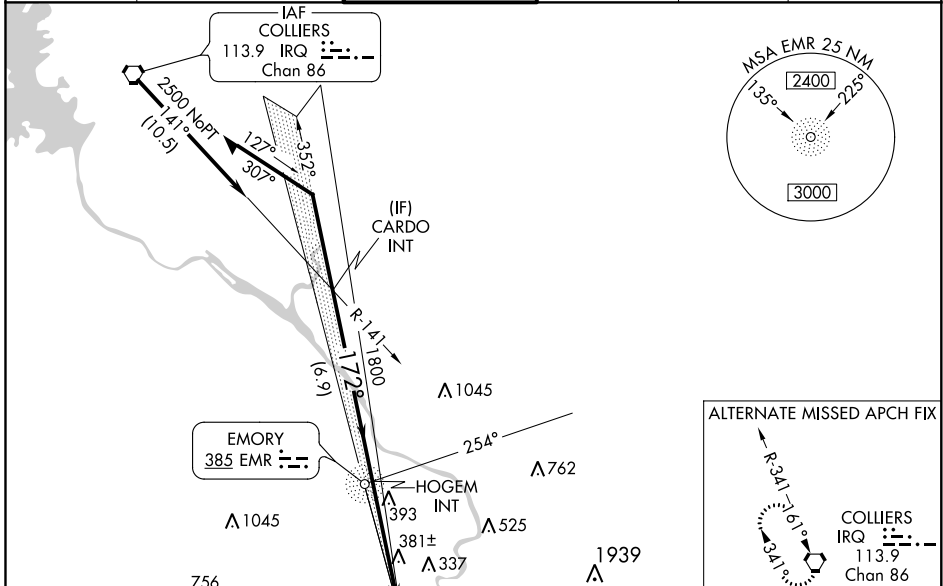
ADF required.

When local altimeter setting not received, use Daniel Field altimeter setting and increase all DA 55 feet and all MDA 60 feet; increase S-LOC 17 Cats C/D visibility to RVR 6000 and Circling Cats C/D visibility ¼ SM. For inop ALS, increase S-LOC 17 Cats C/D visibility to 1½ SM. For inop ALS when using Daniel Field altimeter setting, increase S-LOC 17 Cats C/D visibility to 1½ SM.

MALSR

MISSED APPROACH:
Climb to 2000 direct BUSHE LOM and hold.

ATIS 132.75	AUGUSTA APP CON ★ 126.8 270.3	AUGUSTA TOWER ★ 118.7 (CTAF) 0 239.3	GND CON 121.9 348.6	CLNC DEL 118.65	UNICOM 122.95
-----------------------	---	--	-------------------------------	---------------------------	-------------------------



MISSED APCH FIX

BUSHE AG 233

ELEV 146 TDZE 146

172° 5 NM from FAF

800 X 150

TWR 239

187

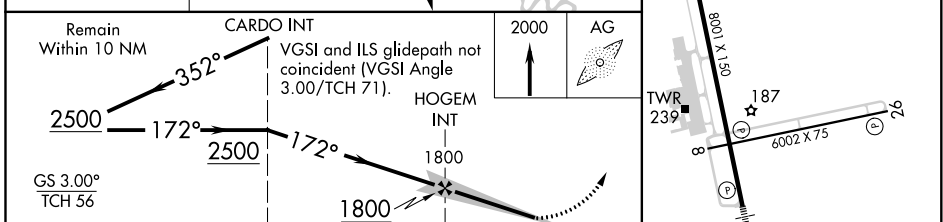
6002 X 75

35

MIRL Rwy 8-26

HIRL Rwy 17-35

REIL Rws 8 and 26



CATEGORY	A	B	C	D
S-ILS 17		350/24	204 (300-½)	
S-LOC 17	640/24	494 (500-½)	640/50	494 (500-1)
CIRCLING	780-1	634 (700-1)	780-1¾ 634 (700-1¾)	900-2½ 754 (800-2½)
FAF to MAP 5 NM				
	Knots	60	90	120 150 180
	Min:Sec	5:00	3:20	2:30 2:00 1:40

SE-4, 16 JUL 2020 to 13 AUG 2020

SE-4, 16 JUL 2020 to 13 AUG 2020