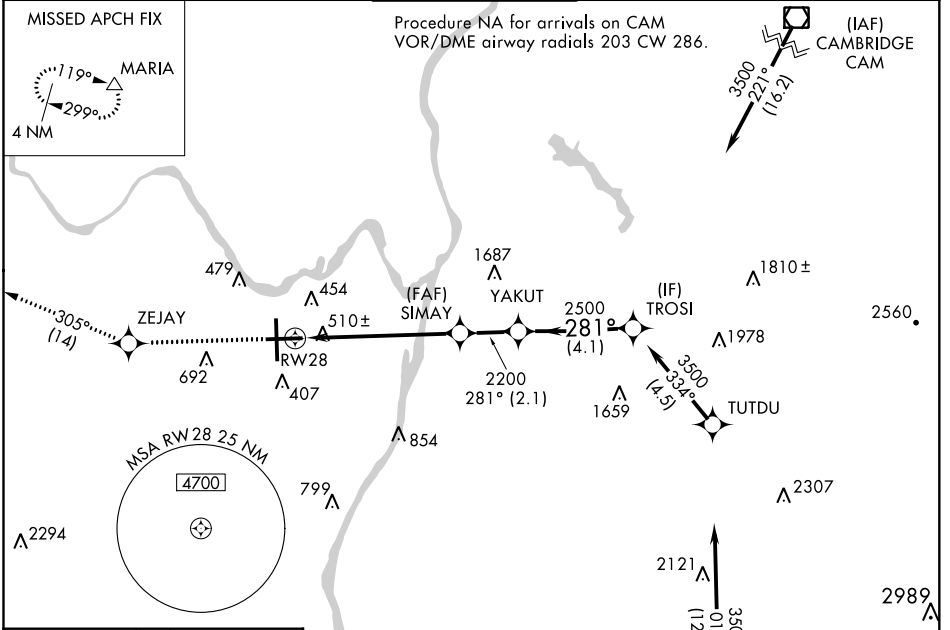


WAAS CH 78124 W28A	APP CRS 281°	Rwy Idg TDZE Apt Elev	6007 285 285
--	------------------------	-----------------------------	---

RNAV (GPS) RWY 28

ALBANY INTL (ALB)

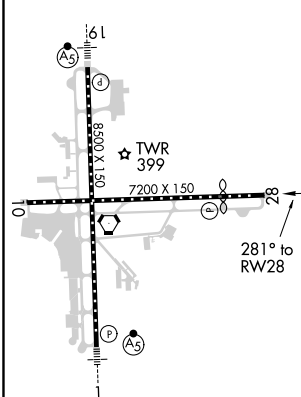
RNP APCH. ▼ For uncompensated Baro-VNAV systems, LNAV/VNAV NA below -18°C (0°F) or above 42°C (107°F). Circling NA west of Rwy 1-19. When VGSI inop, procedure NA at night. Rwy 28 helicopter visibility reduction below 1 SM NA.		MISSED APPROACH: Climb to 3500 direct ZEJAY and on track 305° to MARIA and hold.		
D-ATIS 120.45	ALBANY APP CON 132.825 307.2	ALBANY TOWER 119.5 257.8	GND CON 121.7 348.6	CLNC DEL 127.50



NE-2, 16 JUL 2020 to 13 AUG 2020

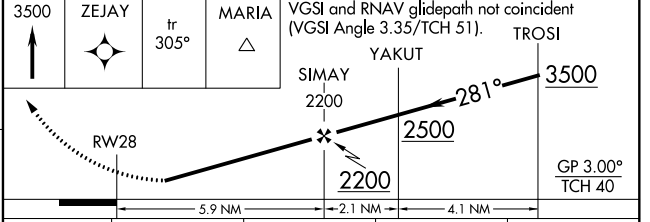
NE-2, 16 JUL 2020 to 13 AUG 2020

ELEV 285	D	TDZE 285
----------	----------	----------



TDZ/CL Rws 1 and 19
HIRL Rwy 1-19
MIRL Rwy 10-28
REIL Rws 10 and 28

Procedure NA for arrivals at CANAN on V487 southwest bound and V130 southeast bound.



CATEGORY	A	B	C	D
LPV DA	783-1 ³ / ₄ 498 (500-1 ³ / ₄)			
LNAV/VNAV DA	825-1 ⁷ / ₈ 540 (600-1 ⁷ / ₈)			
LNAV MDA	760-1	475 (500-1)	760-1 ³ / ₈	475 (500-1 ³ / ₈)
CIRCLING	820-1	535 (600-1)	820-1 ¹ / ₂	840-2 555 (600-2)