

APP CRS <b>124°</b>	Rwy Idg TDZE Apt Elev	<b>N/A</b> <b>N/A</b> <b>1130</b>
------------------------	-----------------------------	---

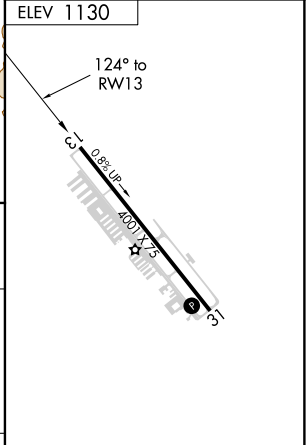
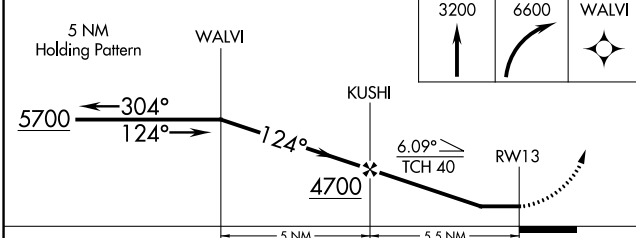
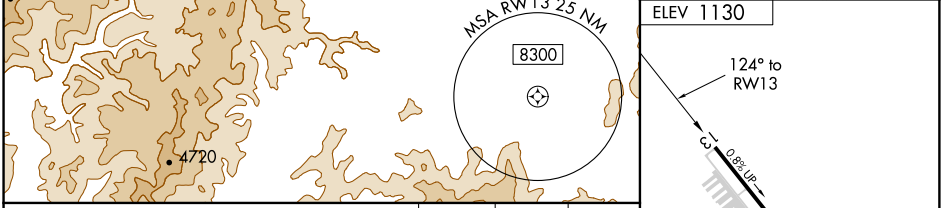
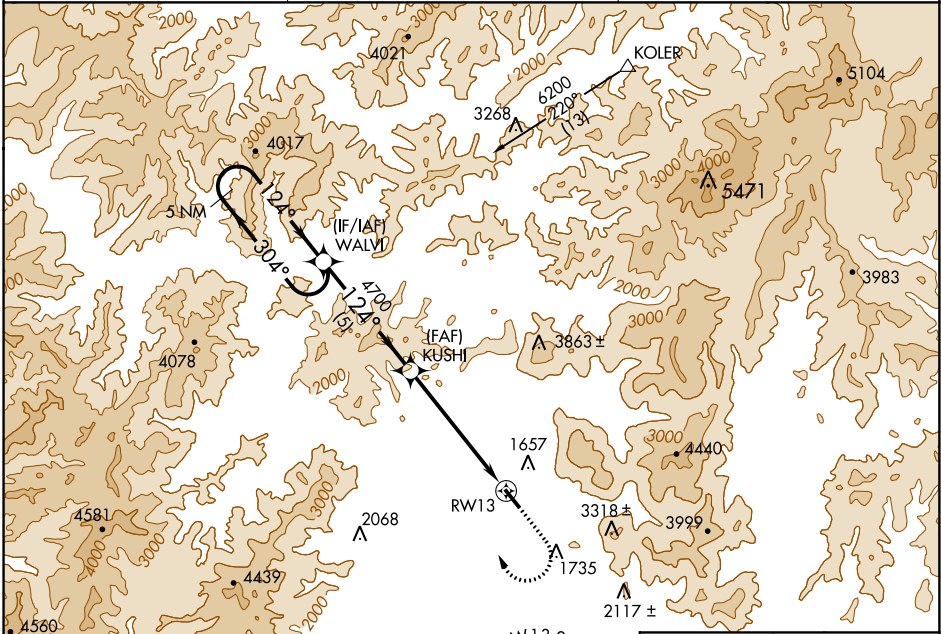
# RNAV (GPS)-A

GRANTS PASS (3S8)

**NA** Circling NA northeast of Rwy 13-31. DME/DME RNP-0.3 NA. Visibility reduction by helicopters NA.

**MISSED APPROACH:** Climb to 3200 then climbing right turn to 6600 direct WALVI and hold, continue climb-in-hold to 6600.

AWOS-3PT <b>120.0</b>	CASCADE APP CON * <b>124.3 379.9</b>	UNICOM <b>122.8 (CTAF) 0</b>
--------------------------	---	---------------------------------



CATEGORY	A	B	C	D
<b>CIRCLING</b>	2920-1¼ 1790 (1800-1¼)	2920-1½ 1790 (1800-1½)		NA

REIL Rwy 13 and 31 **0**  
MIRL Rwy 13-31 **0**

NW-1, 18 JUN 2020 to 16 JUL 2020

NW-1, 18 JUN 2020 to 16 JUL 2020