

LOC/DME I-HWGW 110.7 Chan 44	APP CRS 120°	Rwy Idg TDZE Apt Elev	4199 2189 2205
--	------------------------	-----------------------------	---

ILS or LOC RWY 12L

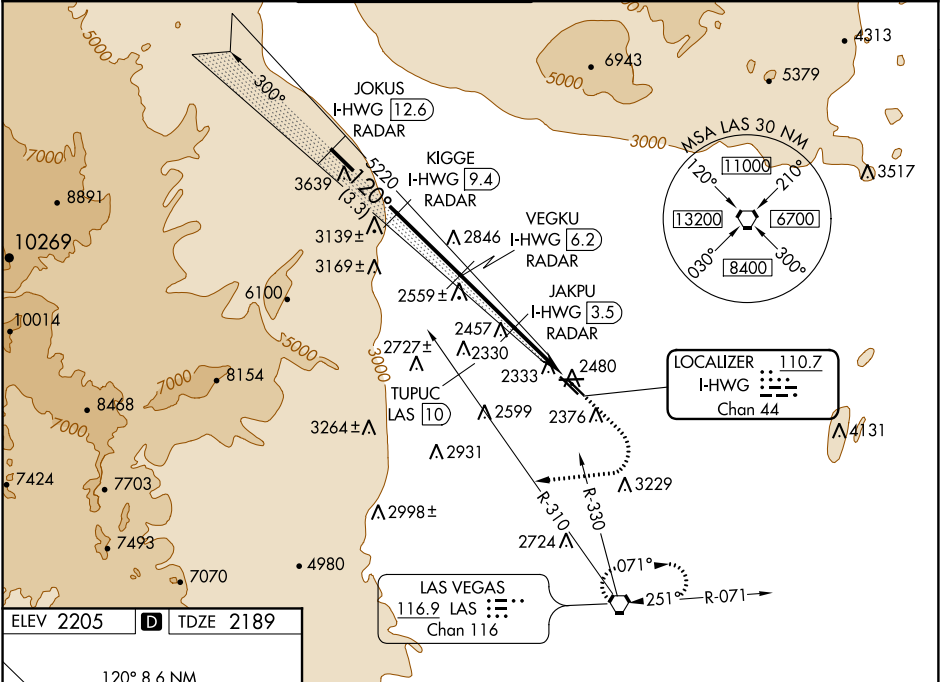
NORTH LAS VEGAS (VGT)

DME and RADAR required.

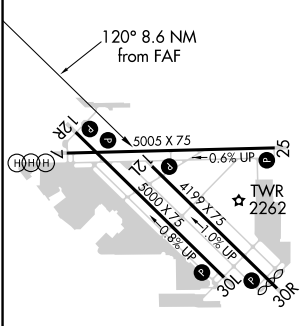
When local altimeter setting not received, use McCarran Intl altimeter setting and increase DA to 2478, and visibility Cats A/B ¼ mile; increase all MDA 40 feet. Rwy 12L helicopter visibility reduction below ¾ SM NA.

MISSED APPROACH: Climb to 2600, then climbing right turn heading 250° to 6000, intercept LAS R-310 outbound to TUPUC/LAS 10 DME then turn right via LAS R-330 inbound to LAS VORTAC and hold.

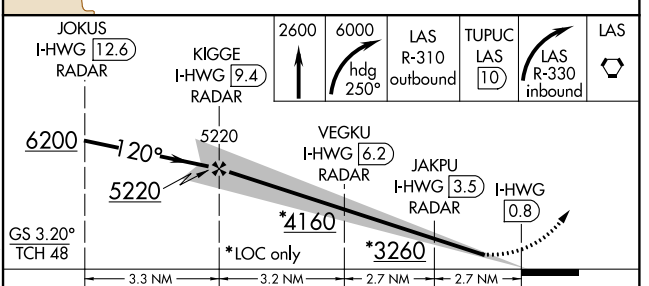
ATIS 118.05	LAS VEGAS APP CON 119.4 360.85	NORTH LAS VEGAS TOWER * 125.7 (CTAF) 360.75	GND CON 121.7	CLNC DEL 124.0	UNICOM 122.95
-----------------------	--	---	-------------------------	--------------------------	-------------------------



ELEV 2205	D	TDZE 2189
-----------	---	-----------



REIL all Rws	MIRL all Rws
FAF to MAP 8.6 NM	
Knots	60 90 120 150 180
Min:Sec	8:36 5:44 4:18 3:26 2:52



CATEGORY	A	B	C	D
S-ILS 12L	2456-1	267 (300-1)		NA
S-LOC 12L	2620-1	431 (500-1)		NA
CIRCLING	2720-1	515 (600-1)		NA

SW-4, 18 JUN 2020 to 16 JUL 2020

SW-4, 18 JUN 2020 to 16 JUL 2020