

GPS RWY 30L NORTH LAS VEGAS (VGT)

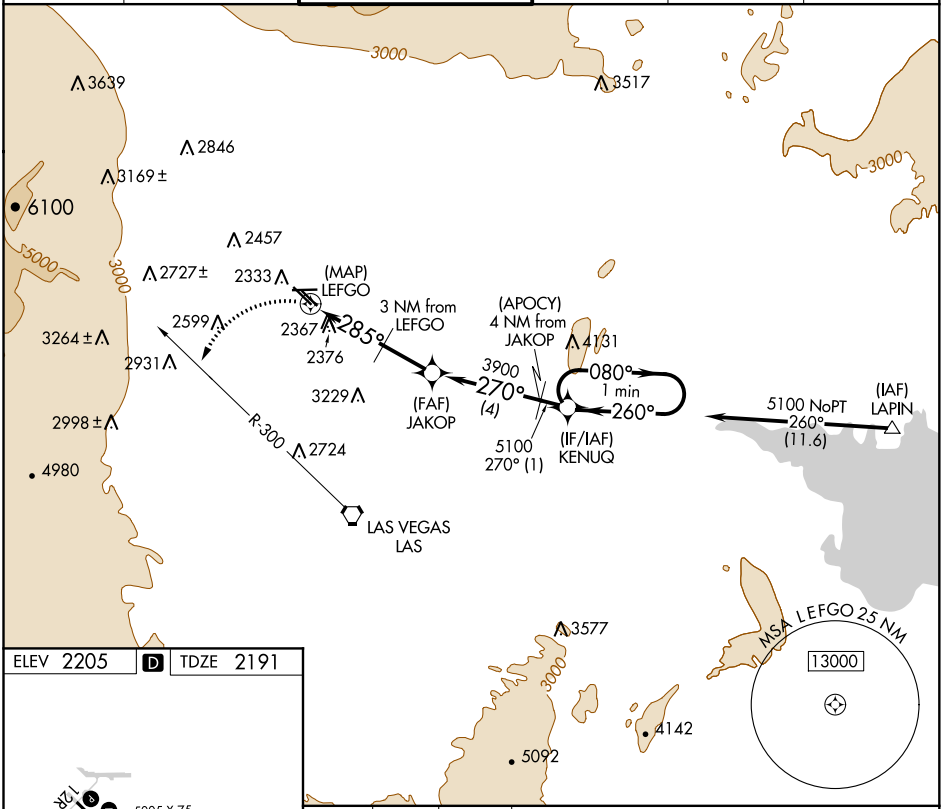
APP CRS	Rwy Idg	5000
285°	TDZE	2191
	Apt Elev	2205

▽ When local altimeter setting not received, use McCarran Intl altimeter setting and increase all MDA 40 feet and S-30L Cats C/D visibility ¼ mile.

▲ NA Circling to Rwy 12L-30R NA.

MISSED APPROACH: Climbing left turn to 4000 via heading 220° and LAS R-300 to LAS VORTAC.

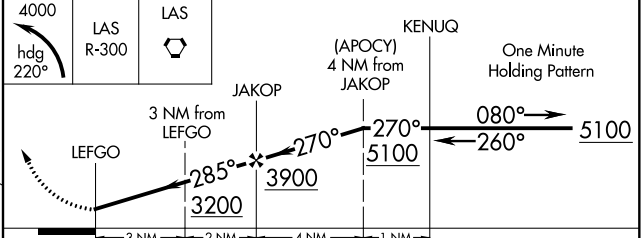
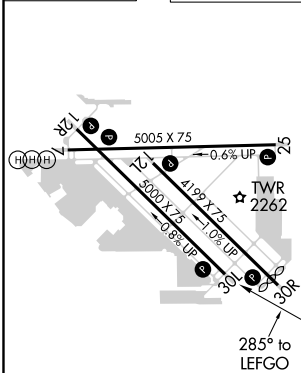
ATIS 118.05	LAS VEGAS APP CON 119.4 360.85	NORTH LAS VEGAS TOWER * 125.7 (CTAF) 360.75	GND CON 121.7	CLNC DEL 124.0	UNICOM 122.95
-----------------------	--	--	-------------------------	--------------------------	-------------------------



SW-4, 18 JUN 2020 to 16 JUL 2020

SW-4, 18 JUN 2020 to 16 JUL 2020

ELEV 2205	D	TDZE 2191
-----------	----------	-----------



CATEGORY	A	B	C	D
S-30L	2680-1 489 (500-1)		2680-1¼ 489 (500-1¼)	2680-1½ 489 (500-1½)
CIRCLING	2720-1 515 (600-1)		2720-1½ 515 (600-1½)	2760-2 555 (600-2)

REIL all Rwys **1**
MIRL all Rwys **1**