

APP CRS	Rwy Idg	5000
135°	TDZE	2205
	Apt Elev	2205

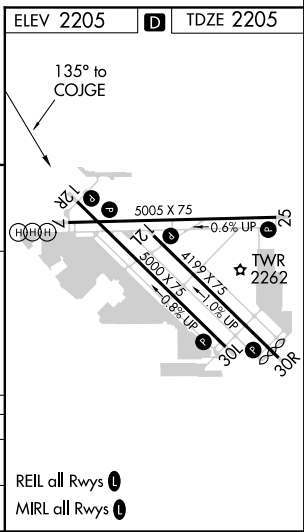
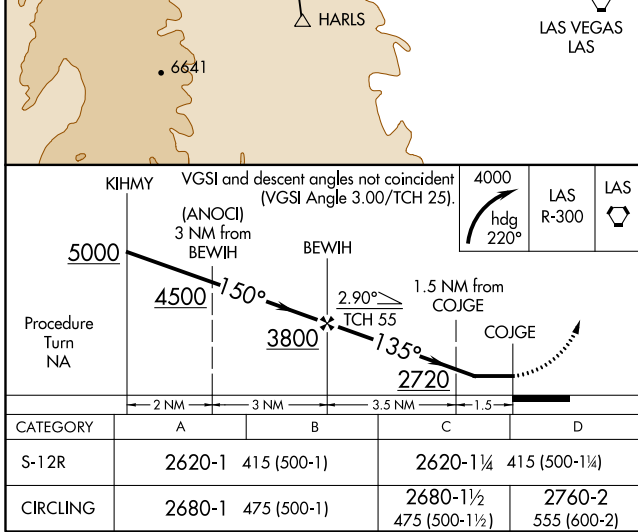
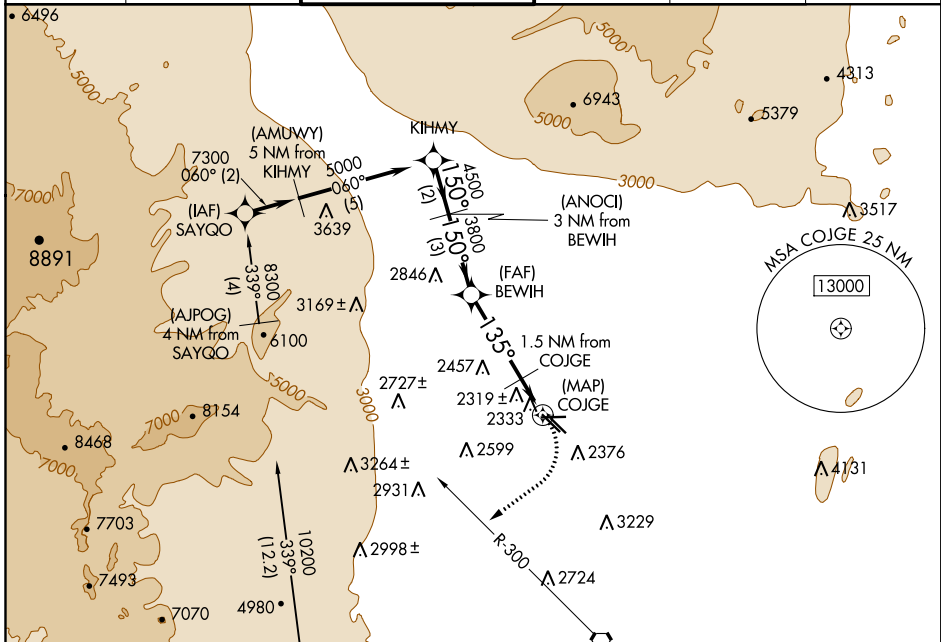
GPS RWY 12R

NORTH LAS VEGAS (VGT)

NA When local altimeter setting not received, use McCarran Intl altimeter setting and increase all MDA 40 feet and S-12R Cat D visibility ¼ mile. Circling to Rwy 12L-30R NA.

MISSED APPROACH: Climbing right turn to 4000 via heading 220° and LAS R-300 to LAS VORTAC.

ATIS 118.05	LAS VEGAS APP CON 119.4 360.85	NORTH LAS VEGAS TOWER * 125.7 (CTAF) 360.75	GND CON 121.7	CLNC DEL 124.0	UNICOM 122.95
-----------------------	--	---	-------------------------	--------------------------	-------------------------



SW-4, 18 JUN 2020 to 16 JUL 2020

SW-4, 18 JUN 2020 to 16 JUL 2020