

(FALL1.VISTA) 16315

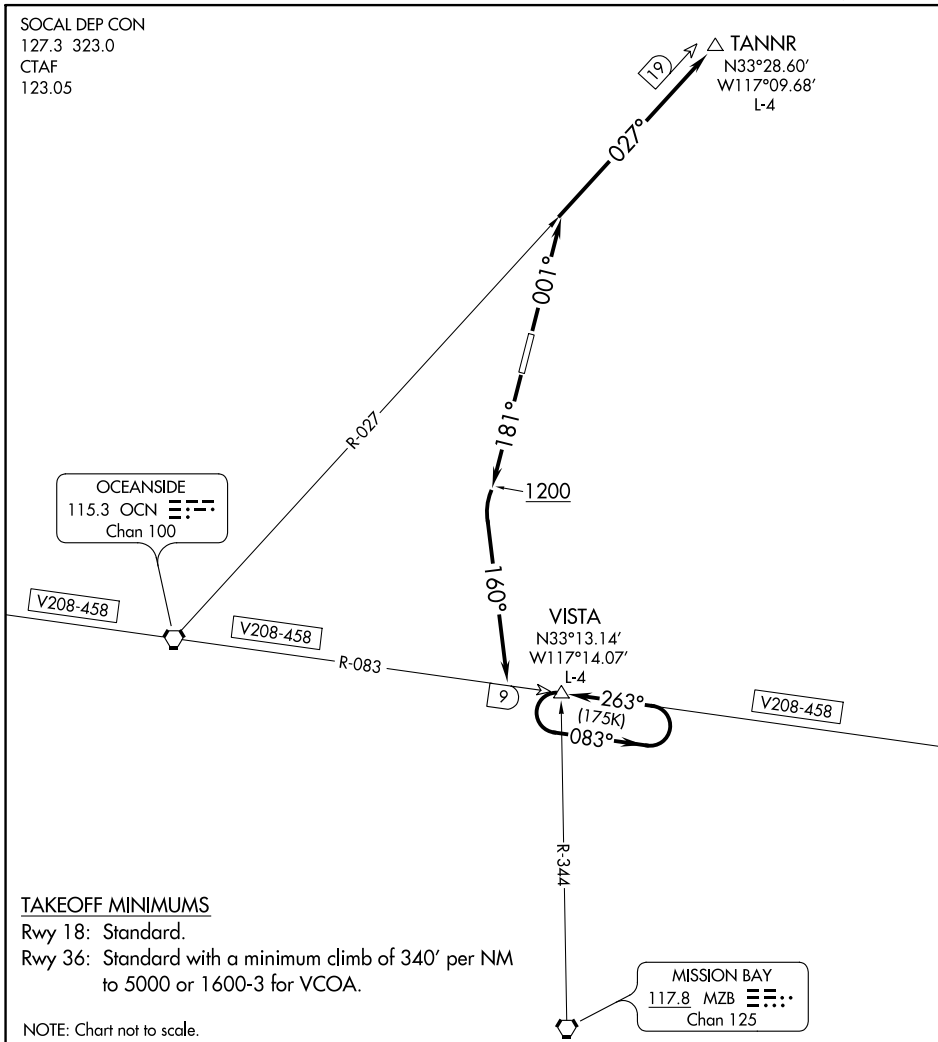
SL-6879 (FAA)

FALLBROOK COMMUNITY AIRPARK (L18)

FALLBROOK ONE DEPARTURE (OBSTACLE)

FALLBROOK, CALIFORNIA

SOCAL DEP CON
127.3 323.0
CTAF
123.05



TAKEOFF MINIMUMS

Rwy 18: Standard.

Rwy 36: Standard with a minimum climb of 340' per NM to 5000 or 1600-3 for VCOA.

NOTE: Chart not to scale.

DEPARTURE ROUTE DESCRIPTION

TAKEOFF RUNWAY 18: Climb heading 181° to 1200, then climbing left turn on heading 160° to join V208-458. Aircraft westbound proceed on course, aircraft eastbound on V208-458 continue climb in VISTA holding pattern to 5000 before proceeding on course.

TAKEOFF RUNWAY 36: Climb heading 001° to intercept OCN VORTAC R-027 to TANNR INT before proceeding on course or, obtain ATC approval for VCOA when requesting IFR clearance. Climb in visual conditions to cross Fallbrook Community Airpark at or above 2200, then proceed on OCN VORTAC R-027 to TANNR INT before proceeding on course.

FALLBROOK ONE DEPARTURE (OBSTACLE)

(FALL1.VISTA) 10NOV16

FALLBROOK, CALIFORNIA
FALLBROOK COMMUNITY AIRPARK (L18)

SW-3, 18 JUN 2020 to 16 JUL 2020

SW-3, 18 JUN 2020 to 16 JUL 2020