

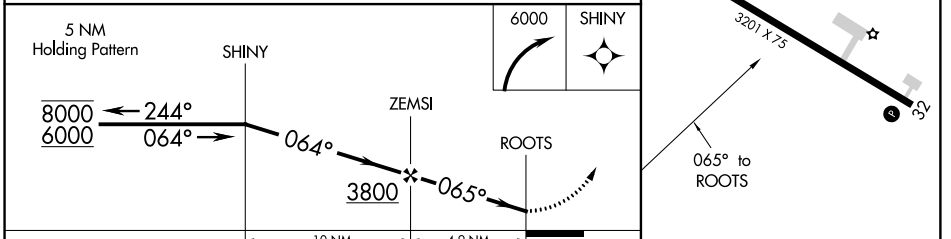
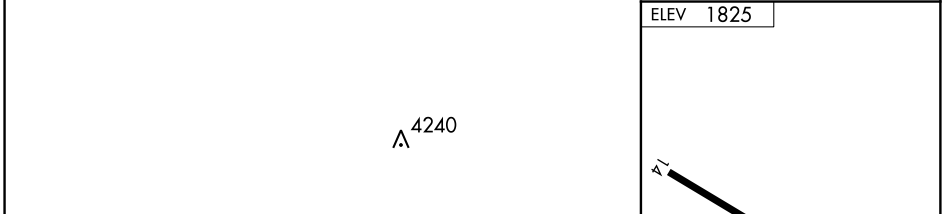
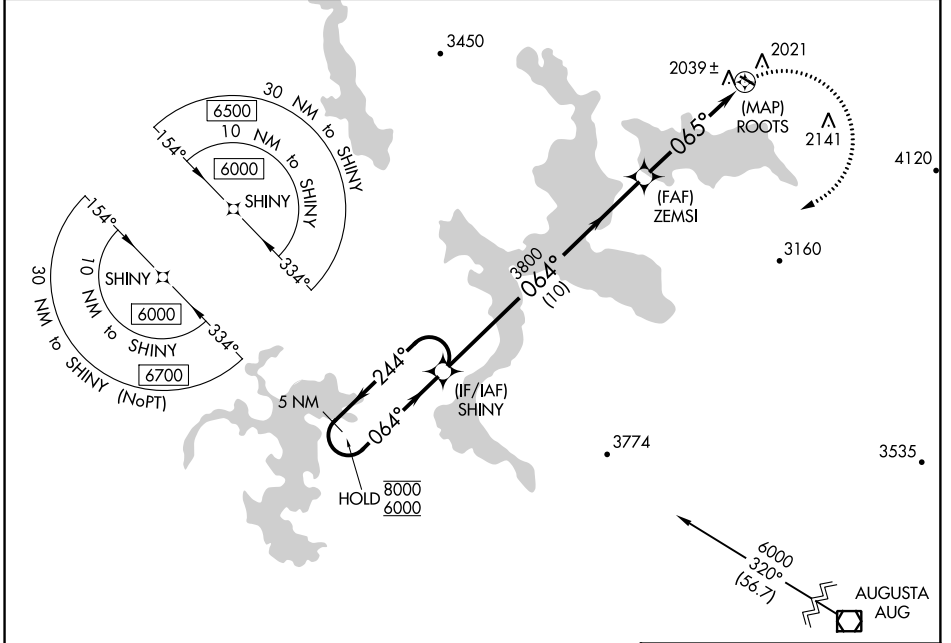
APP CRS	Rwy Idg	N/A
065°	TDZE	N/A
	Apt Elev	1825

RNAV (GPS)-D

STEPHEN A BEAN MUNI (8BØ)

RNP APCH.	MISSED APPROACH: Climbing right turn to 6000 direct SHINY and hold, continue climb-in-hold to 6000.
-----------	---

AWOS-3PT 118.00	BOSTON CENTER 124.25 290.5	UNICOM 122.8 (CTAF) Ø
---------------------------	--------------------------------------	---------------------------------



CATEGORY	A	B	C	D
CIRCLING	2380-1	555 (600-1)	NA	

REIL Rwy 14 and 32 Ø
MIRL Rwy 14-32 Ø

RNAV (GPS)-D

NE-1, 18 JUN 2020 to 16 JUL 2020

NE-1, 18 JUN 2020 to 16 JUL 2020