

WAAS CH 53629 W01A	APP CRS 009°	Rwy Idg TDZE Apt Elev	4407 893 898
--	------------------------	-----------------------------	---

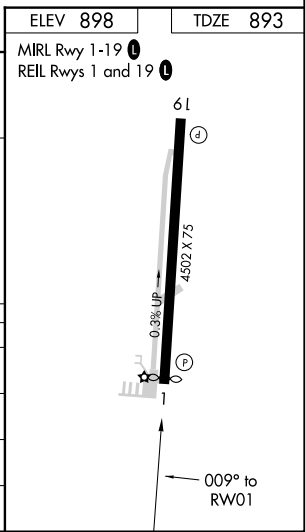
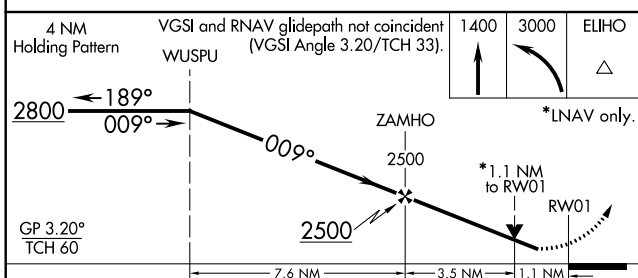
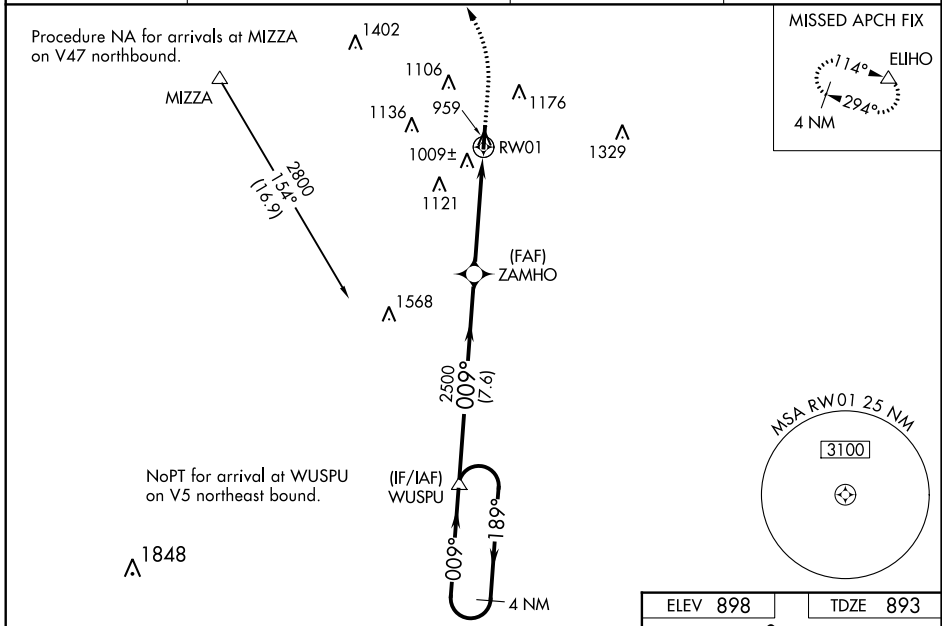
RNAV (GPS) RWY 1

WARREN COUNTY/JOHN LANE FIELD (I68)

⚠ For uncompensated Baro-VNAV systems, LNAV/VNAV NA below -16°C (4°F) or above 54°C (130°F). Baro-VNAV and VDP NA when using Dayton-Wright Brothers altimeter setting. DME/DME RNP-0.3 NA. Rwy 1 helicopter visibility reduction below 3/4 SM NA. When local altimeter setting not received use Dayton-Wright Brothers altimeter setting and increase LPV DA to 1183 feet and LNAV/VNAV DA to 1215 and all MDA 40 feet; increase LNAV Cat C/D visibility 1/8 SM and Circling Cat C visibility 1/4 SM. When Circling to Rwy 19 at night, operational VGSI required, remain on or above VGSI glidepath until threshold.

⚠ NA MISSED APPROACH: Climb to 1400 then climbing left turn to 3000 direct ELIHO and hold.

AWOS-3 120.55	COLUMBUS APP CON 118.85 269.275	CLNC DEL 119.4	UNICOM 123.075 (CTAF)
-------------------------	---	--------------------------	---------------------------------



CATEGORY	A	B	C	D
LPV DA	1157-1	264 (300-1)		NA
LNAV/VNAV DA	1189-1	296 (300-1)		NA
LNAV MDA	1260-1	367 (400-1)		
C CIRCLING	1400-1 502 (600-1)	1480-1 582 (600-1)	1480-1½ 582 (600-1½)	1480-2 582 (600-2)

EC-2, 18 JUN 2020 to 16 JUL 2020

EC-2, 18 JUN 2020 to 16 JUL 2020